



moves YOU.



STUBAI CABLEWAYS  
WINTER 09/10

## ABOVE THE CLOUDS WITH STUBAI CABLEWAYS

The four Stubai cableway routes link up to four highly diverse skiing areas. One easy way to enjoy them all is to get the Stubai Super Ski Pass. Remember, the Stubai Glacier offers you sublime skiing pleasure from October to June. Austria's largest glacier skiing area is in a class of its own. Schlick 2000 is well known for its abundance of snow from December onwards and for its particularly rustic Alpine huts which resonate with warm Tyrolean charm and hospitality. The Elfer lifts offer a marvelous choice of tobogganing runs and there's also the high altitude trail in the Serles area to fascinate fans of the Nordic sport.

STUBAI SUPER SKI PASS	PAGES	4–5
-----------------------	-------	-----

INFORMATION & SAFETY TIPS	PAGES	6–7
---------------------------	-------	-----

INDOOR POOLS	PAGE	8
--------------	------	---

BIG FAMILY STUBAI GLACIER	PAGE	9
---------------------------	------	---



## THE STUBAI GLACIER

Austria's largest glacier skiing area. Varied slopes, family friendliness and guaranteed snow.

PAGES 10–21



## THE SCHLICK 2000

For leisurely skiers and sun-worshippers. Extensive slopes and Alpine hut magic.

PAGES 22–34



## THE ELFER LIFTS

Day and night, the top Tyrolean tobogganing mountain. The top area for demanding skiers.

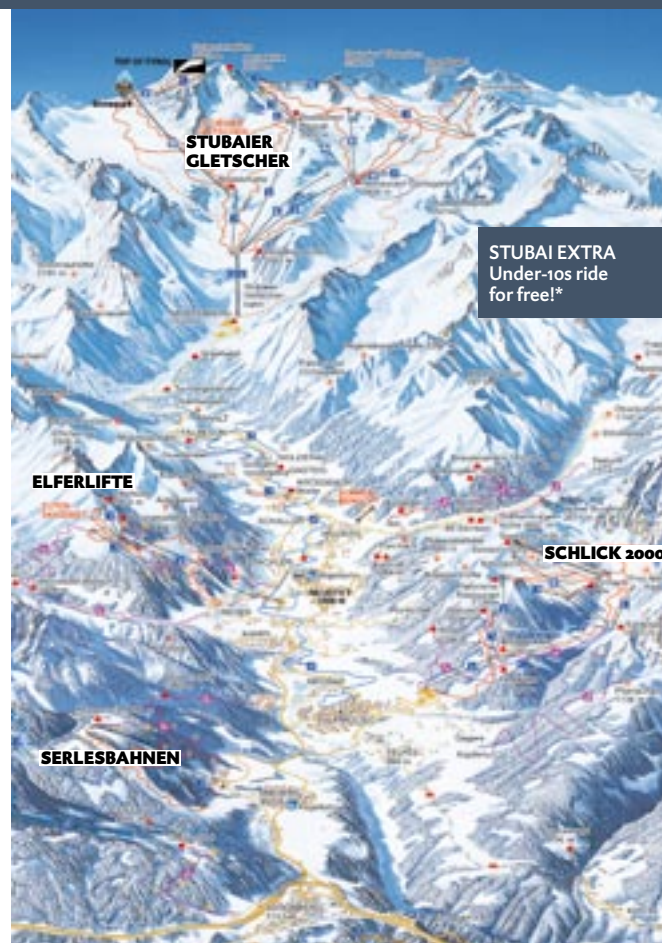
PAGES 36–47



## SERLES CABLEWAYS

The family skiing area. Nighttime tobogganing, snowshoe hiking and panoramic cross-country skiing on the high altitude trail.

PAGES 40–47



NEUSTIFT



FULPMES



NEUSTIFT



MIEDERS

\* Children under the age of 10 ride for free when accompanied by a parent (ID required)!

## INFOBOX

## Valid:

05.12.2009 – 18.04.2010

## Features:



Use of all cableway services in the Stubaital (Stubai Glacier, Schlick 2000, Serles Cableways, Elfer lifts)



Free parking at the cableway terminals



Admission to the indoor swimming pools in Neustift/ Fulpmes



Free ski bus service



Ticket deposit

## Discounts (ID required):

## Groups:

1 free ticket for every 10 full-paying customers

## Children:

under-10s ride for free when accompanied by a parent. Under-15s pay the child rate

## Youth:

young people from 15-18 yrs

## Senior citizens:

over 65 yrs old and over – approx. 15 % off adult rate

## Disabled:

youth rate for 60 %+ disability

## Skiing instructors:

youth rate (ID with valid international yearly stamp required).

## PEAK SEASON

All prices in Euro

plus EUR 2 deposit

05.12.2009 – 10.01.2010 and 30.01.2010 – 18.04.2010\*

Adults

Children

(10–14 yrs.)

Youth

(15–18 yrs.)

Seniors

65+

## Multiple-day ski passes (including shuttle bus service to and from the lifts)

2-day pass	81,50	40,80	57,10	69,30
3-day pass	114,00	57,00	79,80	96,90
4-day pass	143,50	71,80	100,50	122,00
5-day pass	172,50	86,30	120,80	146,70
6-day pass	200,00	100,00	140,00	170,00
7-day pass	224,00	112,00	156,80	190,40
8-day pass	245,50	122,80	171,90	208,70
9-day pass	265,50	132,80	185,90	225,70
10-day pass	284,50	142,30	199,20	241,90
11-day pass	303,00	151,50	212,10	257,60
12-day pass	319,50	159,80	223,70	271,60
13-day pass	335,50	167,80	234,90	285,20
14-day pass	351,00	175,50	245,70	298,40

Upon request we would be pleased to send you our prices for 15-day to 21-day ski passes.

## Ski passes with free choice of days (including shuttle bus service to and from the lifts)

3 out of 4 days	122,00	61,00	85,40	103,70
3 out of 6 days	124,00	62,00	86,80	105,40
5 out of 7 days	187,00	93,50	130,90	159,00
7 out of 10 days	236,00	118,00	165,20	200,60
10 out of 14 days	293,00	146,50	205,10	249,10

## INTERIM SEASON

11.01.2010 – 29.01.2010\*

## Multiple-day ski passes (including shuttle bus service to and from the lifts)

2-day pass	73,00	36,50	51,10	62,10
3-day pass	103,00	51,50	72,10	87,60
4-day pass	129,00	64,50	90,30	109,70
5-day pass	155,00	77,50	108,50	131,80
6-day pass	180,00	90,00	126,00	153,00
7-day pass	202,00	101,00	141,40	171,70
8-day pass	221,00	110,50	154,70	187,90
9-day pass	239,00	119,50	167,30	203,20
10-day pass	256,00	128,00	179,20	217,60
11-day pass	273,00	136,50	191,10	232,10
12-day pass	288,00	144,00	201,60	244,80
13-day pass	302,00	151,00	211,40	256,70
14-day pass	316,00	158,00	221,20	268,60

Upon request we would be pleased to send you our prices for 15-day to 21-day ski passes.

## Ski passes with free choice of days (including shuttle bus service to and from the lifts)

3 out of 4 days	110,00	55,00	77,00	93,50
3 out of 6 days	112,00	56,00	78,40	95,20
5 out of 7 days	168,00	84,00	117,60	142,80
7 out of 10 days	212,00	106,00	148,40	180,20
10 out of 14 days	264,00	132,00	184,80	224,40

\* Prices with stubaital guest card. Prices without the Guest Card are 10 % higher.

A pro-rata ticket price shall apply in the event that the validity of your ticket coincides with overlapping seasons.



## IMPORTANT INFORMATION

### IMPORTANT INFORMATION REGARDING PRICES

All prices indicated in this brochure consist of special rates for STUBAI GUEST CARD holders. Consequently, you must present your Guest Card when you purchase your ski pass from one of the cableway ticketing desks. The STUBAI GUEST CARD is available from the reception desk of your hotel or from your accommodation provider.

Please note that you will be required to pay a supplement of about 10% for ski passes **UNLESS YOU HAVE A STUBAI GUEST CARD**.

All ski pass rates listed include 10 % VAT.

### DISCOUNTS: (ID required)

- Groups:** 1 free ticket for every 10 full-paying customers
- Children:** under-10s ride for free when accompanied by a parent.  
Children from 10 – 14 yrs pay the child rate
- Youth:** young people from 15 – 18 yrs – youth rate
- Senioren:** Senior citizens: over 65 yrs old and over – approx. 20% off adult rate,  
free for seniors over the age of 80
- Disabled:** youth rate for 60 %+ disability
- Skiing instructors:** youth rate (upon presentation of valid international yearly stamp)

### IMPORTANT INDICATIONS REGARDING YOUR SKI PASS

- The ski pass must be presented or handed to the cableway inspector upon request.
- In the event of an inspection you are also required to show appropriate ID if you have a discounted ski pass.
- Ski passes are not transferable..
- Lost ski passes will not be replaced.
- Fares and conditions of carriage apply as indicated on the notice boards.
- **Requirement to present ID:** the age of children, pupils, young people ('youth'), seniors and/or any other justification that entitles to obtain a discounted ski pass must be proved by means of a suitable photo ID upon the purchase of tickets and at the entrances to the lift on request. Please understand that we are unable to provide discounts or issue free children's tickets without appropriate ID.
- **Contact-free check-in:** Ski passes are issued exclusively on KeyCards. A deposit of EUR 2 is charged for this service. Undamaged ski passes with full functionality can be surrendered at all points of sale and ticket return machines.
- All prices inclusive of VAT. We reserve the right to amend ticket prices! A pro-rata ticket price shall apply in the event that the validity of your ticket coincides with overlapping seasons. Please understand that for safety reasons we are obliged to restrict or terminate the sale of certain ticket categories in the event of overcrowding.
- The individual services to which you are entitled under the Stubai Super Ski Pass are delivered by separate, legally autonomous operators. The operator selling the ticket only acts as agent for the other operators. Consequently, only the particular operator can be held responsible for delivering individual services and for compensation claims in the case of any incidents occurring under his obligation to provide services.

**Please keep to the 10 FIS rules of conduct for the ski runs and the funpark!**

## SAFETY INFORMATION

### SKI PASS REFUND

Only applies in the event of sports accidents. The ski pass must be surrendered immediately to one of the ticket desks. The doctor's note can be submitted up to a day later. Days of use are the days which have elapsed from date of issue to date of surrender. No refunds for sliding-scales and one-day tickets. The transport terms and conditions of cableways do not stipulate that ski passes will be reimbursed or extended if the cableways are unable to be put into operation due to weather conditions or force majeure (storms or danger of avalanches). Inclement weather, danger of avalanches, unforeseen departure, interruptions in service or closures of ski trails do not constitute any claims to reimbursement and extension.

### PLEASE NOTE THAT YOU ARE SOLELY RESPONSIBLE FOR YOUR SAFETY IF YOU STRAY FROM DESIGNATED, OPEN PISTES!

- Some downhill runs have to be closed when there is a risk of avalanches. In the event of an alarm, please ensure you precisely follow instructions issued by mountain rescue or cableway staff.
- Protect yourself by using sun cream with a high sun protection factor and wear sunglasses.
- Under no circumstances should you enter any exclusion zones! Do not leave the marked ski runs. Please observe the warning signs (risk of avalanches and crevasses) and the orange warning light by the panorama boards!

**RESCUE SERVICE** Please give **FIRST AID** in the event that you witness a sports accident. Secure the scene of the accident and inform the rescue service.

### ACCIDENT REPORTING POINTS

**Stubai Glacier:** at each cableway station; Gamsgraben rescue office (first floor),

Tel. +43 (0)5226 8141-431, Eisgrat rescue office, tel. +43 (0)5226 8141-337

**Elfer lift:** at each cableway station or Tel. +43 (0)5226 2270 oder 3383

**Schlick 2000:** at each cableway station, at each hut,

Alpine emergency phone number: 140, Valley station +43 (0)5225 62321

**Serles Cableway:** at each cableway station or Tel. +43 (0)5225 62776-0

**PISTE MAINTENANCE SERVICE** The piste maintenance service constantly strives to offer you superbly groomed ski runs. The pistes are groomed on a daily basis. Whenever possible we do this at the end of the day's skiing. Sometimes we also have to send out maintenance vehicles when the pistes are still being used for skiing. Please exercise caution when skiing in the vicinity of these vehicles.

### PLEASE OBSERVE THIS SIGN:

It indicates that a cable winch is being used here to groom the piste, i.e. that this is where the cable which is lifted up by the vehicle actually crosses the piste. Please note the barriers! The ski pistes are not in service from 4-4.30 pm to 8.30-9 am each day. During this time there is no safety protection against hazards! Please note: risk of injury through piste grooming – snow cats, snow cannons, track edges, cable winch, non-secured cables and pipes of the snowmaking machines.





## INDOOR SWIMMING POOLS

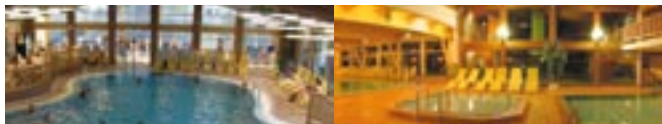
### NEUSTIFT LEISURE CENTRE

After a thrilling day outdoors on the mountain or in the valley, the leisure centre in Neustift is just the right place to recharge those depleted batteries. In addition to the swimming pool and sauna you can also take your pick of a relaxing or revitalising massage. What's more, the Neustift leisure centre features a water slide, sanarium, steam bath, solarium, relaxation rooms and a children's play area.

#### Opening times

Swimming pool, restaurant and sauna	1 pm to 9 pm (daily)
Bowling alley	1 pm to 1 am (daily)
Bowling alley bar	4 pm to 1 am (daily)
Shooting range	7.30 pm to 10.30 pm (Monday)

**Freizeitzentrum Neustift**, Stubaitalstraße 110, 6167 Neustift – Dorf,  
Tel. +43 (0) 5226 2722, [www.freizeitzentrum-neustift-stubaital.at](http://www.freizeitzentrum-neustift-stubaital.at)



### STUBAI LEISURE PARK – FULPMES -TOLFES BATHING COMMUNITY

Blissfully warm invigoration at the cold time of the year. Feel relaxed and revived when storms and blizzards rage outside. Enjoy the pleasant temperatures of the pool or a healthy detox in the 'sweat chamber'. Indoor pool with water slide, separate infants' pool, sauna zone with bio-sauna, steam bath and hot whirlpool, solariums in the indoor pool and sauna area, infrared sauna cubicle, fresh air area and cold relaxation room, restaurant-café.

#### OPENING TIMES:

05.12.2009 – 23.12.2009, closed Mondays  
Tue – Fri 3.30 pm to 9 pm, Sat, Sun, public holidays 1 pm to 9 pm  
25.12.2009 – 05.04.2010  
Mon. – Sun. 1 pm to 9 pm  
Subject to changes.

**Freizeitpark Stubai**, Telfeser Landesstraße 111, 6165 Telfes  
Tel. +43 (0) 5225 62666, Fax +43 (0) 5225 64277

**FREE ADMISSION TO THE SWIMMING WITH THE STUBAI SUPER SKI PASS.**

**BIG  
FAMILY  
STUBAIER  
GLETSCHER**

[www.bigfamilystubai.at](http://www.bigfamilystubai.at)

### BIG FAMILY SKI CAMP. THE REAL DEAL FOR CHILDREN IN THE STUBAI.

#### SKI CAMP FOR CHILDREN AND YOUNG PEOPLE ON THE STUBAI GLACIER

At all times of the day superbly qualified ski instructors at the Neustift Stubai Glacier ski school, a partner establishment of Stubai Glacier Cableways, teach your children how to ski at the BIG Family Ski Camp for children and young people. High quality childcare guaranteed.

For details and registration  
please visit  
[www.schischule-neustift.com](http://www.schischule-neustift.com)  
[www.bigfamilystubai.at](http://www.bigfamilystubai.at)



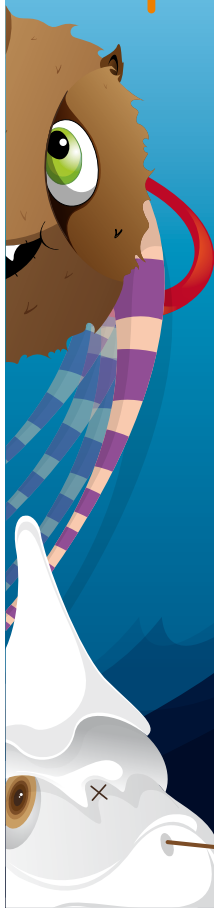
#### KINDERGARTEN

Children aged 3 and over enjoy loving care and supervision at the Gamsgarten mountain terminal. While Mum and Dad are out skiing, hours at the kindergarten fly by as the children do craftwork, paint and play. Food and drink included.

Registrations: Tel. 0043 5226 8141 406  
Opening hours: daily 8.45 am – 4.00 pm  
Prices: Kindergarten ½ day: 15,00 €  
1 day: 22,00 €

#### BIG FAMILY CHILDREN'S RESTAURANT AT 2.620 M

A day out in the snow can leave children feeling really hungry, so it's important they eat lots of healthy food. The restaurant also features a play area, climbing tower and computer games.



## WINTER ON THE STUBAI GLACIER

### INFOBOX

Stubai Gletscher  
6167 Neustift · Austria  
Tel. 0043 5226 8141  
Fax 0043 5226 8141 150  
Schneetel. 0043 820 988440  
info@stubaier-gletscher.com  
stubaier-gletscher.com

Operating times in winter  
First ride up from the valley terminal:  
8 -(8.30) am\*  
Last ride up from the valley terminal: 3.45 pm  
Last ride down from the mountain terminal  
(Eisgrat/Gamsgarten): 4.15 pm\*  
\* Depending on the season (see announce-  
ments on Stubai TV and on the Internet)

Weather info  
3 SAT (daily from dawn to 9 am)  
Stubai TV (all-day)  
webcams (all-day) at  
stubaier-gletscher.com  
daily weather letter

WWW.STUBAI.MOBI: The mobile,  
interactive piste guide sent straight to your  
mobile phone updates you about the lifts,  
ski runs and points of interest on the Stubai  
Glacier. This mobile service can also be used  
offline with an Internet-enabled mobile.

WINNER IN THE  
SNOW-ASSUREDNESS  
CATEGORY AS  
REVIEWED BY  
SNOW-ONLINE.DE

### ROYAL SKIING WIDE CHOICE OF RUNS, SNOW-ASSURED, FAMILY FRIENDLY

Approx. 110 kilometers of downhill runs with easy to challenging trails promise lots of fun on the slopes. Snow is guaranteed from October to June between 1,750 and 3,210 meters. In addition to the glaciers and natural snow, modern snow-making facilities in the glacier foreland provide for top snow conditions. The bottom station with a comfort center offers winter athletes extra comfort. Children enjoy fantastic adventures in the snow at the BIG Family Ski Camp for children and young people.

### SEE IT FIRST – THE STUBAI GLACIER AT A GLANCE

- Austria's largest glacier skiing area
- 45 minutes away from Innsbruck
- snow assured from October to June
- 25 modern cableways and lifts
- top 110 km of pistes with a brilliant bonus: natural snow on the glacier bed makes for perfect skiing
- 10 km long Wilde Grub'n downhill run to the valley, 1,500 m altitude difference
- BIG Family Ski Camp: childcare available for children between 3 and 15 years of age.
- Snowpark Moreboards Stubai Zoo with triple kicker line, rails and boxes
- TOP OF TYROL summit platform at 3,210 m above sea level
- Family and seniors downhill run on the Daunferner
- giant slalom racecourse on the Eisjochferner
- speed measurement course on the Daunferner
- cross-country skiing on the 2 km long high altitude trail
- ice climbing tower at Gamsgarten – 20 m high tower from December to March, introductory courses.
- glacier gastronomy: a wide choice of restaurants and meals
- 3 Intersport outlets on the Stubai Glacier – shop, hire, servicing and depot right in the skiing area.
- free parking spaces for coaches and cars with car park shuttle bus

## STUBAI SERVICE

### HAPPY ski & all

**4\* Hotel Happy Stubai**, Tel. 0043 5226 2611, [www.happy-stubai.at](http://www.happy-stubai.at)  
**HAPPY ski & all**. We offer you the first really **SUPER ALL INCLUSIVE PACKAGE** for winter sports. Price per person: from EUR 479.00 (4 days)

### FREE SKI BUS

Our visitors can ride on a **FREE** ski bus service between Schönberg and the Mutterberg valley terminal from October to May. Details and schedules are available from the Stubai Tirol tourist board.

### EISGRAT INQUIRIES OFFICE

Information about the weather, lifts, ski runs, events and ski bus departure times, etc.

For further details and information about hiring various training runs please contact the Eisgrat inquiries office tel. 0043 5226 8141-345.  
 Gamsgarten inquiries office: tel. 0043 5226 8141-471.

### NEUSTIFT TICKETING OFFICE

The Neustift ticketing office is located in the village of Neustift just opposite the BP service station on the road leading to the Stubai Glacier. Open end of September 2009 to mid-May 2010. The Neustift ticketing office is particularly recommended for groups.

Tel. 0043 5226 2789, Fax 0043 5226 2789-20

E-Mail: [kassa.neustift@stubaier-gletscher.com](mailto:kassa.neustift@stubaier-gletscher.com)

### Opening times:

Mon – Sat	7:30 am – 12 noon	2 pm – 5 or 6* pm
Sun and public holidays:	7:30 am – 12 noon	4 pm – 5 or 6* pm
	* depending on the season	



Award for:

## STUBAI GLACIER EXTRAS

**THE BOTTOM STATION FOR MORE COMFORT** Awarded the ISR Architecture Award 2009 for a top class design. As well as the sheltered entrance area the modern valley terminal also offers stepless access ramps, a spacious ticketing area and a “comfort centre” with a ski depot.

**FAMILY AND SENIORS DOWNHILL RUN – FOR THE VERY FIRST TIME IN THE TYROL** Relaxed downhill skiing along the wide run on the Daunferner (piste no. 7).

**MOREBOARDS STUBAI ZOO – THE SNOW PARK** The snow park on the Gaisskarferner welcomes snowboarders and freestyle skiers of all abilities from mid-October to May and features a triple kicker line with a selection of jumps, a line for beginners and rail and box lines with various obstacles. Details of the set-up and events are available from [www.stubai-zoo.com](http://www.stubai-zoo.com).



**‘EISJOCH’ RACECOURSE** A simple slalom on the Eisjochferner for skiers and snowboarders. Details and racecourse hire for groups and clubs available from the Eisgrat inquiries office. Where champions train: the Austrian, German, Canadian, Japanese and Swedish national ski teams get into top shape on the World Cup training course on the Daunferner.

**SPEED MEASUREMENT SECTION** Measure your ‘Schuss’ speed at the end of piste 7 on the Daunferner.

**STUBAI ICE TOWER** An ideal training ground for ice-climbers and those wishing to learn the sport. The 20 m high ice tower is open from December to the end of March on the Gamsgarten.

### CROSS-COUNTRY SKIING

High-altitude training: 2 km-long high-altitude cross-country ski trail on the Gamsgarten, difference in elevation of 60 m. From Eisse in the direction of Wilde Grub’n and back (groomed as of November, depending on snow conditions). Cross-country ski courses: registration at the Gamsgarten Ski School office.

**WINTER HIKING** Groomed winter hiking trail from the Gamsgarten mountain station to the Eisgrat mountain station.

**SUMMIT PLATFORM TOP OF TYROL 3,210 METERS** At 3,210 metres above sea level the TOP OF TYROL summit platform hovers over the glacial ice and reveals fascinating distant views of the surrounding glacier world (open subject to good weather and snow conditions).





# WINTER PRICES 17.10.2009 – 10.01.2010 and 30.01. – 02.05.2010

# INTERIM SEASON 11.01.2010 – 29.01.2010

16  
17

## PRICES WITH THE STUBAI GUEST CARD

(Prices without the Guest Card are 10% higher)

See p. 6 for details of discounts

All prices in Euro plus EUR 2 deposit	Adults	Children (10–14 yrs.)	Youth (15–18 yrs.)	Seniors 65+
<b>Day tickets</b>				
from 8/8.30 am	38,00	19,00	24,70	30,40
from 11 am	34,50	17,30	22,40	27,60
from 12 noon	31,50	15,80	20,50	25,20
from 1 pm	28,50	14,30	18,50	22,80
1 ½-day ticket*	58,00	29,00	37,70	46,40
* ½ day from 12 noon and all of the next day				
<b>Bonus ski passes (first afternoon from 12 noon plus 2 or 3 subsequent days)</b>				
2 ½-day pass	73,50	36,80	47,80	58,80
3 ½-day pass	108,00	54,00	70,20	86,40
<b>Ski passes</b>				
2-day pass	73,50	36,80	47,80	58,80
3-day pass	108,00	54,00	70,20	86,40
4-day pass	136,00	68,00	88,40	108,80
5-day pass	157,50	78,80	102,40	126,00
6-day pass	179,00	89,50	116,40	143,20
7-day pass	201,50	100,80	131,00	161,20
8-day pass	219,00	109,50	142,40	175,20
9-day pass	236,50	118,30	153,70	189,20
13-day pass	301,00	150,50	195,70	240,80
14-day pass	316,00	158,00	205,40	252,80

We should be pleased to send you are prices for 10-day to 21-day ski passes on request. The above multiple day ski passes do not include a free choice of days; in other words, the ski passes must be used on consecutive days. Prices for multiple day passes without the Guest Card are available on request.

### Ski passes with free choice of days

3 out of 4 days	112,00	56,00	72,80	89,60
3 out of 6 days	113,00	56,50	73,50	90,40
5 out of 7 days	173,00	86,50	112,50	138,40
7 out of 10 days	214,00	107,00	139,10	171,20
10 out of 14 days	273,50	136,80	177,80	218,80
10 days of 6 months	333,00	166,50	216,50	266,40

### Single rides for hikers, X-country skiers, ice climbers

	21,20	10,60	13,80	17,00
--	-------	-------	-------	-------

Ski mountaineers can purchase any number of fare stages.

Details are available from the ticket offices. Ticket sales close at 10 am.

**FREE  
SKI PASS  
FOR ALL  
UNDER 10\$  
(WHEN ACCOMPANIED BY  
A FULL-PAYING PARENT)**

## PRICES WITH THE STUBAI GUEST CARD

(Prices without the Guest Card are 10% higher)

See p. 6 for details of discounts

All prices in Euro plus EUR 2 deposit	Adults	Children (10–14 yrs.)	Youth (15–18 yrs.)	Seniors 65+
<b>Day tickets</b>				
from 8/8.30 am	34,20	17,10	22,20	27,40
from 11 am	31,10	15,60	20,20	24,90
from 12 noon	28,40	14,20	18,50	22,70
from 1 pm	25,70	12,90	16,70	20,60
1 ½-day ticket*	52,20	26,10	33,90	41,80
* ½ day from 12 noon and all of the next day				
<b>Bonus ski passes (first afternoon from 12 noon plus 2 or 3 subsequent days)</b>				
2 ½-day pass	66,20	33,10	43,00	53,00
3 ½-day pass	97,20	48,60	63,20	77,80
<b>Ski passes</b>				
2-day pass	66,20	33,10	43,00	53,00
3-day pass	97,20	48,60	63,20	77,80
4-day pass	122,40	61,20	79,60	97,90
5-day pass	141,80	70,90	92,20	113,40
6-day pass	161,10	80,60	104,70	128,90
7-day pass	181,40	90,70	117,90	145,10
8-day pass	197,10	98,60	128,10	157,70
9-day pass	212,90	106,50	138,40	170,30
13-day pass	270,90	135,50	176,10	216,70
14-day pass	284,40	142,20	184,90	227,50

We should be pleased to send you are prices for 10-day to 21-day ski passes on request. The above multiple day ski passes do not include a free choice of days; in other words, the ski passes must be used on consecutive days. Prices for multiple day passes without the Guest Card are available on request.

### Ski passes with free choice of days

3 out of 4 days	100,80	50,40	65,50	80,60
3 out of 6 days	101,70	50,90	66,10	81,40
5 out of 7 days	155,70	77,90	101,20	124,60
7 out of 10 days	192,60	96,30	125,20	154,10
10 out of 14 days	246,20	123,10	160,00	197,00
10 days of 6 months	333,00	166,50	216,50	266,40

The spring rates come into effect on May 3, 2010! Ski runs are open right through to summer, depending on snow conditions. Stubai Glacier ski passes which are valid for at least 3 days can also be used on the Elfer lifts (daily until 3 pm, from December to the end of March).

## ANNUAL TICKETS

Valid one year from the date of issue. They are available on request from all of our ticket offices.

### • QUALITY INGREDIENTS

Brand products and local ingredients from the Stubai in cooperation with local farmers, bakers and butchers

### • ALL MEALS FRESHLY PREPARED

### • AUSTRIAN AND INTERNATIONAL RECIPES

### • PASTA AND PIZZA

with freshly grated Grana-Padano Parmesan cheese

### • EXTRA TIPP

homemade goulash soup and apple or curd cheese strudel freshly baked each day!



STUBAIER  
GLETSCHER  
KÜCHLEIN SPEZIAL

**FREE  
LOUNGE-  
CHAIRS!**

### GAMSGARTEN MARKET RESTAURANT 2,620 m

The family meeting point for young and old! Modern self-service restaurant with pleasant house bar. Large sun deck with BBQ chicken area, lounge hire and self-catering room in the Rotadl lounge.

### 'ZUR GOLDENEN GAMS' FULL SERVICE RESTAURANT 2,620 m

Tyrolean dishes and international cuisine. Freshly prepared pizzas and pasta dishes are our specialty. Large sun deck and pleasant house bar.

### EISGRAT PANORAMIC RESTAURANT 2,900 m

Enjoy panoramic views of the marvellous glacier world! You can also eat any food you have taken along with you in the self-catering room.



**THE JOCHDOHLE 3,150 m**  
TOP OF TYROL. Austria's highest mountain restaurant is fastened to the rock and hovers over the glacier ice.

**EISSEE PARASOL BAR 2,620 m**  
The essential après-ski bar on the Gamsgarten!

### ICE CUBE BAR\*

The mobile bar at the Fernau middle station.

### SKIHÜTTE AM BÖDELE \* 2,600 m

The rustic Alpine ski hut at the bottom station of the Fernau 6-seater chairlift.

\* Open during fine-weather days subject to appropriate snow conditions.

### RENTAL DISCOUNTS AND SPECIAL SERVICES

- free exchange facilities within the skiing area – as often as you wish
- free depot for our hire equipment
- free servicing of hire skis and snowboards
- free equipment for children up to the age of 10 when parents also hire
- free protective helmet for children for the duration of hire while supplies last
- 50% discount for young people up to and including 14 yrs
- half-day prices up to 12.30 pm or from 12 noon



**Hire on  
the glacier**  
means more benefits and  
convenience for you!

### COMFORT CENTER

At the comfort center with beauty corner and wellness nook at the bottom station we offer you an ultra-modern depot and a large selection of winter sport accessories.

### SHOPPING

Great selection of leading brands for skis, snowboards, boots, clothing and accessories at fantastic prices!

### BOOT COMPETENCE CENTER

With know-how and hi-tech (footprint scanning) we will find the right new boots for you and solve all of your boot problems.

### SERVICE

With our specialists and state-of-the-art service technology we will whip your skis and snowboards into shape – quickly (20 min. guarantee) or overnight. Super snowboard service in our shop on the Eisgrat.

Contact: Intersport Gamsgarten, 0043 5226 8141-469,  
info@intersport-stubaier-gletscher.com

### RENT TODAY – SKI TOMORROW

If you buy a multiple-day ski pass from the Stubai Glacier Cableways ticket offices (at the valley terminal or in Neustift) you can choose your hire equipment at our Intersport shops on the glacier on the actual day you arrive – and use the deposit facilities for free. The required return ride on Stubai Glacier Cableways is available FOR FREE as of 2 pm.

From cool to sporty, these are the events on the Stubai Glacier.

**Oct 23-25, 2009: Moreboards Stubai premiere**

Cool park session, BBQ, shop battle, live concert and party.  
Information [www.stubai-zoo.com](http://www.stubai-zoo.com)

**Nov 5-8, 2009: SportScheck Glacier Festival**

Biggest materials test in the Alps. SportScheck presents over 3,500 winter sport items.

**Nov 14-15, 2009;**

**May 8-9, 2010: SAAC basic camps**

2-day avalanche camps with background info and practical exercises for off-piste skiers. Details and registration at [www.saac.at](http://www.saac.at)

**Nov 20-22, 2009: 9th Stubai Telemark Festival**

Materials test, workshops, "Freeheel Austrian Masters", movie night, etc.

**March 13, 2010: Stubai Jam**

Big skiing and snowboarding contest with DJ sound, BBQ and following party.

**NEUSTIFT-STUBAI GLACIER ALPINE & CROSS-COUNTRY  
SKIING AND SNOWBOARDING SCHOOL**

Florian Kindl (ski school director), A-6167 Neustift  
Eisgrat office Tel.: 0043 5226 8181  
Head office Tel.: 0043 5226 2540  
E-mail: [info@schischule-neustift.com](mailto:info@schischule-neustift.com)  
[www.schischule-neustift.com](http://www.schischule-neustift.com)



**NEUSTIFT ALPINE SKI SCHOOL**

Robert Span (ski school director), A-6167 Neustift, Dorfplatz  
Tel.: 0043 5226 3461  
E-mail: [info@alpin-schischule.com](mailto:info@alpin-schischule.com)  
[www.alpin-schischule.com](http://www.alpin-schischule.com)



**NEUSTIFT OLYMPIA**

**SKI AND SNOWBOARD SCHOOL**

Albin Knoflach (ski school director), A-6167 Neustift, Dorf 2  
Tel.: 0043 676 3305112  
E-mail: [info@skischule-neustift.com](mailto:info@skischule-neustift.com)  
[www.skischule-neustift.com](http://www.skischule-neustift.com)



- Experience **TOP OF TYROL** summit platform TOP OF TYROL with 360° panorama  
The Jochdohle: highest-located mountain restaurant in Austria  
3,000 m summit conquest on Kleiner Isodor: secured climb.
- NEW! Audioguide Hiking audio guide with the Glacier Whisperer: the audio guide tells you about thrilling glacier phenomena and legends
- Free information hour at **TOP OF TYROL**.  
Learn interesting facts about the eternal ice. Daily from July to August.
- Adventurous glacier hike: starting point for many alpine and glacier tours.
- Fernau climbing park: fixed rope route, climbing routes and airy, challenging sports fixed rope route
- The Stubai Glacier as a WildWater location: follow the course of the water down to the valley past glacier phenomena



## INFOBOX

Schlick 2000 Schizentrum AG  
6166 Fulpmes · Austria  
Tel. valley station +43 (0)5225 62321  
Tel. office +43 (0)5225 62270  
Fax office +43 (0)5225 62270 99  
info@schlick2000.at  
www.schlick2000.at

### Operating times in winter

Start of the season (scheduled for the end of November) to April 18, 2010  
Kreuzjochbahn: first ride up: 8.30 am  
Last ride down from midway station at 4.30 pm; All other lifts & cableways from 9 am to 4 pm

Valley terminal ticket office  
Mon-Fri: 8 am to 5 pm  
Sat: 8 am to 6.30 pm  
Sun: 7.30 am to 5 pm

### Snow and weather reports

Panorama-TV:  
3SAT (daily in the morning until 9 am)  
Stubai TV (all day)  
Wetterhotline: +43 (0)5225 62970  
www.schlick2000.at with Webcam

5  
MINUTES FROM  
THE STUBAITAL  
MOTORWAY  
EXIT

## WINTER AT SCHLICK2000

**SCHLICK2000**  
Skizentrum / Wanderzentrum Stubaital

22  
23

### LARGEST SKI AREA IN THE FRONT SECTION OF THE STUBAITAL

The diverse ski area – accessible in 15 minutes from Innsbruck via the motorway (A13) – offers winter athletes a full program. The high valley of Schlick 2000 provides a snow guarantee thanks to the favorable natural snow location and extensive snow-making down into the valley. 10 rustic Alpine huts, lodges, bars and restaurants tempt the visitor with typically Tyrolean dishes and legendary Tyrolean hospitality.

### SEE IT FIRST – SCHLICK 2000 AT A GLANCE

- WIDE CHOICE OF SKI RUNS offering all levels of difficulty with views of the impressive mountain setting
- FAMILY SKI AREA with lots of PLACES TO STOP AT FOR A BREAK
- Longest DOWNHILL SKI RUN in the Stubaital with artificial snow
- 'RONNY'S KINDERLAND' with qualified child carers
- STUBAI PARK SCHLICK 2000 and FREE NATURE PARK for boarders and free skiers
- FREESTYLE-FUN in the entire area
- SPEED STRETCKE – measure your speed in the area
- SKILINE – Who can tackle the greatest difference in altitude in one day?
- TOBOGGANING AND CROSS -COUNTRY SKIING FUN as well as snowshoe and winter hiking trails
- EXCELLENT THERMALS in the area for paragliders and hang-gliders







**WINTER PRICES 19.12.09 - 10.01.10 / 30.01.10 - 28.02.10 / 20.03.10 - 05.04.10**
**INTERIM SEASON**
**11.01.10-29.01.10  
01.03.10-19.03.10**
**26  
27**
**PRICES WITH STUBAI GUEST CARD**  
 (prices without the Guest Card are 10 % higher)  
 For details of discounts see p. 6

All prices in Euro plus EUR 2 deposit	Adults	Children (10–14 yrs.)	Youth (15–18 yrs.)	Seniors 65+
<b>Day ski passes (including shuttle bus service to and from the lifts)</b>				
from 8.30 am	30,50	15,60	19,80	24,40
from 11.00 am	28,00	14,30	18,20	22,40
from 12.00 noon	25,00	12,80	16,30	20,00
from 1.00 pm	22,00	11,20	14,30	17,60
from 2.00 pm	19,00	9,70	12,40	15,20
<b>Morning ski pass</b>				
until 1 pm	25,00	12,80	16,30	20,00
<b>Taster ticket for beginners (Schanzlin and Schlickerboden practice lifts)</b>				
from 8.30 am	21,50	11,00	15,10	18,30
<b>Multiple-day ski passes (including shuttle bus service to and from the lifts)</b>				
1 ½ days, valid from 12	45,00	23,00	29,30	36,00
2 days	57,50	29,30	37,40	46,00
2 ½ days, valid from 12	67,50	34,40	43,90	54,00
3 days	87,50	44,60	56,90	70,00
4-day pass	113,50	57,90	79,50	96,50
5-day pass	133,00	67,80	93,10	113,10
6-day pass	155,00	79,10	108,50	131,80
7-day pass	169,00	86,20	118,30	143,70
8-day pass	185,00	94,40	129,50	157,30
9-day pass	202,00	103,00	141,40	171,70
10-day pass	216,50	110,40	151,60	184,00
14-day pass	271,50	138,50	190,10	230,80

Upon request we should be pleased to send you our prices for 11-day to 21-day ski passes.

<b>Ski passes with free choice of days</b>				
3 out of 4 days	89,00	45,40	62,30	75,70
4 out of 5 days	120,00	61,20	84,00	102,00
5 out of 6 days	143,50	73,20	100,50	122,00
5 out of 7 days	148,00	75,50	103,60	125,80
7 out of 10 days	179,00	91,30	125,30	152,20
10 out of 14 days	234,00	119,30	163,80	198,90

<b>Single tickets for tobogganists, hikers and cross-country skiers – valid for the whole season</b>				
Middle st.	5,40	2,90	4,90	4,90
Mountain st.	13,00	6,90	11,10	11,10

**UNDER  
-10\$ RIDE  
FOR FREE**  
 (when accompanied  
by an adult!)

**PRICES WITH STUBAI GUEST CARD**  
 (prices without the Guest Card are 10 % higher)  
 For details of discounts see p. 6

All prices in Euro plus EUR 2 deposit	Adults	Children (10–14 yrs.)	Youth (15–18 yrs.)	Seniors 65+
<b>Day ski passes</b>				
from 8.30 am	27,50	14,00	17,80	22,00
from 11.00 am	25,20	12,90	16,40	20,20
from 12.00 noon	22,50	11,50	14,70	18,00
from 1.00 pm	19,80	10,10	12,90	15,80
from 2.00 pm	17,10	8,70	11,20	13,70
<b>Morning ski pass</b>				
until 1 pm	22,50	11,50	14,70	18,00
<b>Taster ticket for beginners (Schanzlin and Schlickerboden practice lifts)</b>				
from 8.30 am	19,40	9,90	13,60	16,50
<b>Multiple-day ski passes (including shuttle bus service to and from the lifts)</b>				
1 ½ days, valid from 12	40,50	20,70	26,40	32,40
2 days	51,80	26,40	33,70	41,40
2 ½ days, valid from 12	60,80	31,00	39,50	48,60
3 days	78,80	40,10	51,20	63,00
4-day pass	102,20	52,10	71,60	86,90
5-day pass	119,70	61,00	83,80	101,80
6-day pass	139,50	71,20	97,70	118,60
7-day pass	152,10	77,60	106,50	129,30
8-day pass	166,50	85,00	116,60	141,60
9-day pass	181,80	92,70	127,30	154,50
10-day pass	194,90	99,40	136,40	165,60
14-day pass	244,40	124,70	171,10	207,70

Upon request we should be pleased to send you our prices for 11-day to 21-day ski passes.

<b>Ski passes with free choice of days</b>				
3 out of 4 days	80,10	40,90	56,10	68,10
4 out of 5 days	108,00	55,10	75,60	91,80
5 out of 6 days	129,20	65,90	90,50	109,80
5 out of 7 days	133,20	68,00	93,20	113,20
7 out of 10 days	161,10	82,20	112,80	137,00
10 out of 14 days	210,60	107,40	147,40	179,00

Paragliding	Schlick2000	Flypark Stubai*
Paragliding single ride	9,50	–
1 day of paragliding	19,00	27,00
½ day of paragliding	15,00	22,00
Book of 10 tickets	81,00	90,00
Season pass	99,00	210,00
Yearly pass	179,00	–

 Hang-glider transport  
2,00

\* Elfer lifts and Schlick2000

 Pre- and post-season – 20% (off winter prices in the peak season) from the start of the season  
 to Dec 18, 2009 and Apr 6, 2010 to Apr 18, 2010. Subsequent complaints will not be recognised! Prices subject to change.

## RONNY'S KINDERLAND



Kinderbetreuung von Sonntag bis Freitag  
9.30 bis 15.30 Uhr in unserem KinderneSt!

In the ski area Schlick 2000 our private ski school "KinderneSt!" can be found at the Froneben middle station. A room for playing and warming up with a trained staff to care for all children – not only school-age children! Little ones as of 3 months are welcome. In addition to play equipment there is a separate quiet room and bedroom as well as a changing table. Advance reservation is not required. Payment is made directly at the KinderneSt!. Opening hours: daily from 9.30 am to 3.30 pm. Information available at the ski school office of the Stubai Ski School at the Froneben middle station

### Main ski school office in Fulpmes

Kirchplatz, in the same building as the Stubai Tirol tourist board

Director: Sepp Rettenbacher · 6166 Fulpmes · Austria · schischule-stubai@eunet.at

Tel./Fax +43 (0)5225 64764 Mobile: +43 (0)664 3332222

Mon- Fri 9 am-11 am and 3 pm-6 pm Sat + Sun 9 am-12 noon and 3 pm-6 pm

### Further ski school registration offices:

Schlick 2000 bottom station – right by the ski bus stop – Tel. +43 (0)5225 64 4 41

Froneben midway station - Schlick2000 – Tel. / Fax +43 (0)5225 64 9 88 · www.schischule-stubai.at

Please understand that for safety reasons, the use of Kinderland and its three conveyor belts is reserved exclusively for the Stubai Tirol ski school.



### A superb shopping experience!

Enormous selection of winter sports equipment, boots, clothing and accessories.



**The latest top quality winter sports equipment is ready and waiting for you.**



Get your hire equipment straight from the NEW valley terminal at the SCHLICK 2000 skiing centre and enjoy lots of benefits as well as greater convenience. FREE depot for our hire equipment! **Intersport Pittl – the footwear expert! insole guarantee · exchange guarantee**

### 6166 Fulpmes, Kirchstraße 1

Tel. +43 (0)5225 62428

Fax + 43 (0)5225 62428-14

Opening times:

Mon–Sa 8 am–12 noon and  
3 pm–6.30 pm, Sun and public  
holidays as and when required

### Schlick 2000 bottom station

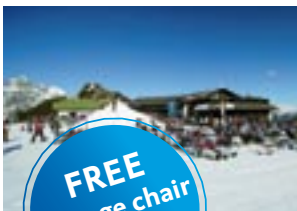
Tel. +43 (0)5225 64115

Opening times:

daily from 8.15 am–5 pm

**intersport-pittl@aon.at**  
**www.intersport-pittl.at**





**FREE**  
Lounge chair  
rentals

### Panorama Restaurant Kreuzjoch – 2,136 m

At the Kreuzjoch cable car mountain terminal with fascinating panoramic views. Busy restaurant with the highest pizzeria in the skiing area. We'll spoil you with local delicacies (e.g. "kaiserschmarren") and oven-baked potatoes, etc. Sumptuous salad buffet and great deals for the kids. **VIP wicker beach chairs, Internet point, lockers.** Sunshine plateau

with ice bar and **free lounge hire!** Big snow hill with a zippy snow rocket for the kids. Tel. +43 (0)5225 62321-500 (Fax -519), or +43 (0)676 7777 431 [panorama@schlick2000.at](mailto:panorama@schlick2000.at)



### Sennjochhütte – 2,225 m

Situated at the mountain station of the 4-seater Sennjoch chairlift. Highest and sunniest venue for drinks and refreshments in the Schlick area. Enjoy genuine Tyrolean hospitality at the ice bar or in the wonderfully rustic restaurant. Tel. +43 (0)5225 62409, [schlickeralm@fulpmes.at](mailto:schlickeralm@fulpmes.at) [www.schlickeralm.at](http://www.schlickeralm.at)



### Zirmachalm – 1,935 m

**New this winter – the first silver service restaurant in Schlick 2000.** So go on, treat yourself and enjoy the choice of delicious dishes we prepare freshly in our kitchen and superb selections from our wine list. Whether in the cosy lounge (heated by our rustic tiled stove) or on the sun decks, you're sure to be delighted by our "Zirmachalm".

Tel. +43 (0)664 840 7895, [schlickeralm@fulpmes.at](mailto:schlickeralm@fulpmes.at) [www.schlickeralm.at](http://www.schlickeralm.at)



### Schlicker Alm – 1,645 m

Situated right at the bottom station of the 4-seater Sennjoch chairlift. Marvelous sundeck, separate non-smoking room and children's playground. Whether your preference is for cheese spaetzle or cut-up and sugared pancake with raisins (Kaiserschmarrn), for pizza or a salad buffet, here there's something to match each and every taste. Wintersteiger service now also available for snowboards. Tel. +43 (0)5225 62409, [schlickeralm@fulpmes.at](mailto:schlickeralm@fulpmes.at) [www.schlickeralm.at](http://www.schlickeralm.at)



### Bergrestaurant Brugger Alm – 1,350 m

cable car service. Après-ski with an unbeatable atmosphere every day throughout the winter at the parasol bar. Enjoy breathtaking views from the sun deck. The wonderfully cosy lounges furnished in a traditional Tyrolean style are ideal for hosting celebrations and Alpine hut evenings, etc. Tel. +43 (0)5225 64644, [bruggeralm@aon.at](mailto:bruggeralm@aon.at)



### Fronebenalm – 1,306 m

With his captivating music, the landlord at this Alpine lodge provides a wonderful highlight during an unforgettable day's skiing. Large sun deck and Tyrolean specialties. Situated in the heart of the skiing area below the midway station of the Kreuzjoch cable car service this pleasant lodge is right by the ski run which takes you down to the valley. Tel. +43 (0)5225-62211, [bruggerhof@stubaital.at](mailto:bruggerhof@stubaital.at)



### SchlussLiacht

The ultimate après-ski bar located directly at the bottom station. Bid farewell to a day on the slopes here. Meeting place with hot tunes for young people and those young-at-heart.

Tel. +43 (0)676 7777 440, [info@schlick2000.at](mailto:info@schlick2000.at)

## SKI SCHOOLS

### Stubai Ski School

Director: Sepp Rettenbacher

Kirchplatz (building of the Stubai Tirol Tourist Board), 6166 Fulpmes

Tel./Fax +43 (0)5225 64764, Mobile +43 (0)664 3332222,

[info@schischule-stubai.at](mailto:info@schischule-stubai.at), [www.schischule-stubai.at](http://www.schischule-stubai.at)



### Fulpmes Ski School

Director: Kurt Hupfaut

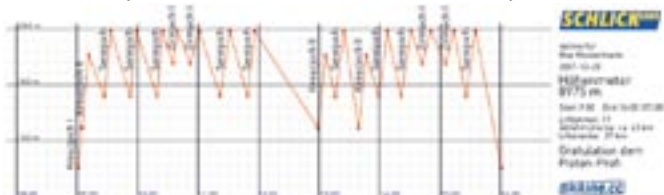
Bahnstraße 7, 6166 Fulpmes

Tel. +43 (0)5225 62317, Mobile +43 (0)664 3429526,

Fax +43 (0)5225 62062, [k.hupfaut@tirol.com](mailto:k.hupfaut@tirol.com), [www.stubai.cc](http://www.stubai.cc)

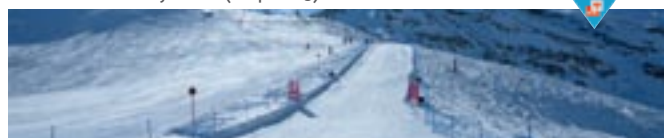






See how good you are compared to your ski partner! At the end of a day out on the slopes you can get a computer print-out of your performance at the Schlick 2000 valley terminal. And by handing it in to the "SchlussLicht" après-ski bar you can also enter our weekly competition held every Friday from 3.30 pm. What's more, by entering your ski pass number on the Internet at [www.schlick2000.at](http://www.schlick2000.at) or at the terminal in the Kreuzjoch Panorama Restaurant you can always find out how many metres you've skied up down the slopes.

Find out how fast you ski (on piste 3)!!



for all visitors with a valid ski pass within the Stubaital. Timetables available from the Stubai Tirol tourist board. Use our free parking spaces, low-cost underground car park and the free shuttle bus from the car park to the bottom station.

Schlick 2000 is also well known for the excellent way its pistes are groomed. Modern snow-making facilities provide snow-assured ski runs, including the new 2,8 km downhill run to the valley.



Dec 12, 2009 **50 YEARS** OF SCHLICK AND  
INTERSPORT PITTL”

Featuring the opening of the new Intersport-Rent outlet and the new "SchlussLiacht" après-ski bar at the valley terminal.

## "NIGHT SHOW"

Wednesday, Dec 30, 2009, Jan 6, 2010, Feb 3, 10, 17 and 24, 2010, Mar 3 and 10, 2010, as of 8.30 pm  
Spectacular evening performance by the Stubai Ski School and Schlick 2000. Ski instructor demo, huge fireworks display, live music, etc.



## "GO FOR SKI YOUTH DAYS"

Jan 9-10, 2010, Jan 16-17, 2010, Jan 23-24, 2010  
-50% for young people and children

Every Thu: "NIGHTTIME TOBOGGANING"

Cableway ride up from 7.30-9 pm. Freshly groomed 2.6 km long illuminated run. Stop-off for refreshments possible. Toboggan hire: € 50 deposit or deposit of ID.



**MARCH 7, 2010: "SCHLICKER SNOW PARTY"**

Open-air concert at the bottom station as of 3 pm.  
Already a "must" for all ski and music fans. Free admission!

Every Thursday. "LADIES' DAY" as of Jan 3, 2010

Ladies get the all-day ticket for € 13.80 and the half-day ticket (as of 12 noon) for € 11.30.



Every Friday: "ALTITUDE DAY"

Who can ski downhill the most in one day?  
Every Friday – announcement of the best three in the  
"Schlusslicht" après-ski bar (valley terminal) at 3.30 pm  
– great prizes to be won!

## APRIL 18, 2010: "COUNTDOWN PARTY"

The annual close of the skiing season at the Kreuzjoch panoramic restaurant with Skiline – Competition: "How many metres difference in altitude did you ski?" followed by prize-giving ceremony for our season and RegioCard ticket holders.



## SUMMER PREVIEW



- NEW: "StubaiBlick" observation deck
- NEW: Short panoramic trail featuring artistic rest benches from the Kreuzjoch to the "StubaiBlick" observation deck with tremendous views
- Nature trail "Schlick 2000" from Kreuzjoch mountain terminal to the Schlickeralm
- 65 km of hiking trails in all levels of difficulty to the surrounding Alpine huts, lodges and summits, panoramic lake with adventure trail to the Schlicker Alm.
- Alpine plants nature trail, free guided tours every Tuesday in July and August
- Alpine adventure park: rock climbing practice area for sports enthusiasts.
- Grosse Ochsenwand fixed rope route 800 meters in elevation
- Children's "Mountain Adventure Day" with the BIG Family Stubai Summer Club
- Bouncy and climbing castle, trampoline and slack line, etc.



STUBAI, my arena.



### GREGOR SCHLIERENZAUER, the „Nordic King“

- winner of the Overall World Cup in 2009
- winner of the Ski Flying World Cup in 2009
- 13 World Cup victories in one season 2008/09 – a new record!
- winner of the Nordic Tournament
- gold medallist in the world championships on the Großschanze (as a team member in 2007 and 2009)
- double ski flying world champion in Oberstdorf 2008

comes from the Stubai.

The Stubaital is proud of its outstanding top athletes and can't wait for the Olympic winter to come with its high-flyer!

## THE ELFER, YOUR MOUNTAIN FOR TOBOGGANING!

### UNBEATABLE ARGUMENTS FOR AN UNFORGETTABLE WINTER'S DAY

The entrance to the "Elfer", the local mountain of the residents of Neustift, is situated directly in the town center, i.e. perfect for some challenging skiing in between.

The two tobogganing runs – both an extravagant 8 km long – guarantee an unforgettable sledging experience particularly at night, when fun, entertainment and romance all blend together into a beautiful whole.

### SEE IT FIRST – THE ELFER LIFTS AT A GLANCE

- CENTRAL – the bottom station in the center of Neustift
- EXTREMELY challenging trails above the rooftops of Neustift
- MAGICAL – the cleared winter hiking trails to the Elferhütte and through Pinnistal
- EXHILARATING – the unbeatable thermal lift of flying
- PLAYFULLY learn how to ski – our practice lifts in Krößbach and Milders (ski bus stops directly at the lifts)
- ENDLESSLY long (8 km each), idyllic toboggan runs.
- RUSTIC – the alpine huts along the trails and toboggan runs.
- ROMANTIC – nighttime tobogganing on the lighted toboggan run: Monday, Wednesday and Friday from 7.30-9 pm
- TOBOGGAN HIRE at the bottom station. Price: EUR 5 (EUR 50 deposit or deposit of ID as security)

### INFOBOX

11er Lifte  
Hochstubaier Liftanlagen Ges.m.b.H  
6167 Neustift, Moos 12  
Tel. +43 (0)5226 2270  
elfer@neustift.at  
www.elfer.at

Operating times in winter  
As of Dec. 19, 2009: season finale, depending on snow conditions, daily from 9 am to 4 pm and, if the snow conditions allow, on Dec. 5 - 8, 2009 and Dec. 12/13, 2009

Ski passes for the Elfer lifts and for the Stubaier Super Ski Pass available as of 8.30 am at the Panorama lift ticket window. Ski passes for the Krößbach and Milders practice lifts available directly on site.

Weather info  
www.elfer.at







### Cableways and lifts

- A** Elfer Panorama Cableway
- B** T-bar lift Elfer I Elferhütte
- C** T-bar lift Elfer II Hölltal
- D** T-bar lift Krößbach\*
- E** Sonnenberglift Milders\*



### Ski runs

- 1** Downhill Elferhütte
- 2** Downhill Hölltal
- 3** Valley run
- 4** rail Krößbach
- 5** rail Sonnenberg



### Tobogganing runs

- 1** Neustift
- 2** Pinnistal (8 km with floodlighting)
- 3** Pinnistal (8 km)



### Winter hiking trails

- 1** Winter hiking trail Neder-Talstation (20 min.)
- 2** Winter hiking trail Elferhütte (30 min.)
- 3** Winter hiking trail Pinnisalm (1 ½ hrs.)



### Paragliding

- S** Take-off area Paragliders and hang-gliders
- L** Landing area Paragliders and hang-gliders

\* Ski passes for the Krößbach und Milders practice lifts available directly on site.



# PRICES WITH THE STUBAI GUEST CARD

See p. 6 for details of discounts

All prices in Euro plus EUR 2 deposit	Adults	Children (10–14 yrs.)	Young people/ Students*	Seniors 65+	Family*
<b>TOBOGGANING , HIKING</b>					
Uphill ride	8,00	4,00	7,00	7,50	19,50
Uphill and downhill ride	12,50	6,00	9,00	10,50	29,50
Downhill ride	7,00	3,50	5,00	6,00	17,00
Evening multi-ride pass	13,50	6,50	10,50	12,00	32,00
10 points	75,00	37,00	55,00	62,00	

## ALL ACTIVITIES

1 day	25,00	12,50	18,50	23,50	59,00
Morning until 1 pm	16,50	8,00	12,50	15,00	39,00
from 11 am	22,50	11,50	16,50	21,00	54,00
from 12 noon	19,50	9,50	14,50	18,50	46,00
from 1 pm	16,50	8,00	12,50	15,00	39,00
from 2 pm	14,50	7,00	10,00	13,50	34,00
1,5 days	40,00	20,00	29,50	35,00	95,00
2 days	47,00	24,00	35,00	39,00	109,00
2,5 days	58,00	29,00	43,50	49,00	139,00
3 days	69,00	34,00	50,50	56,00	159,00
4 days	84,00	42,00	64,00	69,00	199,00
5 days	99,00	49,00	74,00	80,00	229,00
6 days	112,00	56,00	83,50	90,00	259,00
3 out of 5 days	71,00	36,00	54,00	58,00	169,00
4 out of 6 days	88,00	44,00	66,00	72,00	209,00
5 out of 7 days	99,00	50,00	77,50	85,00	235,00

From 6 days and season passes on request!

## PRACTICE LIFTS (Kröbäch T-bar, Sonnenberglift Milders)

from 9 am	13,00	6,50	9,50	13,00	30,00
from 12 noon	9,00	5,00	7,00	9,00	21,00
from 1 pm	8,00	4,50	6,00	7,50	20,00
3 days	32,00	16,00	22,00	32,00	76,00
5 days	44,00	22,00	32,00	44,00	99,00

PARAGLIDING	Elfer	Flypark (Stubai, Elferlifte und Schlick2000)
Paragliding single ride	9,50	9,50
1 day of paragliding	25,00	27,00
¼ day of paragliding	19,50	22,00
10 points	87,00	87,00
Hang-glider transport	2,00	2,00
Season pass	199,00	210,00



**\* FAMILY PASS:**  
VALID FOR TWO PARENTS AND  
ALL OF THEIR CHILDREN  
(UP TO 15 YRS.)

\* Young people (15-18 years) and students up to age 27 (ID required)



## Zum Weber Lois refreshments stop – 1,110 m

Right by the Neustift tobogganing run (8km). A stop-off with hearty, delicious refreshments for young and old, plus a snow bar for nighttime tobogganists. Non-stop hot food. We can also host private functions here for you upon request.

Tel. +43 (0)676 3281854, [zumweberlois@neustift.cc](mailto:zumweberlois@neustift.cc)



## Issenangeralm – 1,374 m

The pleasantly rustic restaurant stop on the 'Pinnistal' tobogganing run. Enjoy magnificent views of the Pinnistal valley from the excellent sun deck. Klaus Ribis, Tel. +43 (0)5226 2621 oder +43 (0)676 4503064, [info@issenangeralm.at](mailto:info@issenangeralm.at)



## Elfer-Agrar Panorama restaurant – 1,812m

Directly at the mountain station of the Panorama lift. High above Neustift with a wonderful view of Stubaital, we will pamper you with homemade, traditional delicacies. During the tobogganing evenings we create a party mood at our snow bar in addition to a cozy atmosphere in the Jägerstüberl. Tel. +43 (0)676 7059039

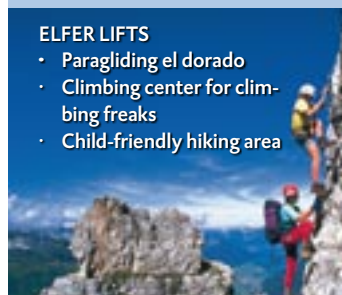
## SUMMER PREVIEW

### ELFER LIFTS

- Paragliding el dorado
- Climbing center for climbing freaks
- Child-friendly hiking area

### SERLES CABLEWAYS

- 2.8 km long summer toboggan run
- 50 mountain bike tours in all degrees of difficulty
- Tyrolean mountain with the most flowers



## INFOBOX

Serlesbahnen Mieders  
Bergbahnen Ges.m.b.H. & Co KG  
Waldrasterweg 1  
6142 Mieders  
Tel. +43 (0)5225 62 776 0  
Fax +43 (0)5225 62 776 4  
kassa@serlesbahnen.at  
www.serlesbahnen.at

### Operating times

As of Dec. 19, 2009: season finale, depending on snow conditions, daily from 9 am to 4 pm and, if the snow conditions allow, on Dec. 5 - 8, 2009 and Dec. 12/13

Ski passes for the Elfer lifts and Serles cableways as well as for the Stubai Super Ski Pass available as of 8.30 am at the ticket window at the bottom station.

Weather info  
www.serlesbahnen.at

## WINTER WONDERLAND AT THE FOOT OF THE SERLES!



42  
43

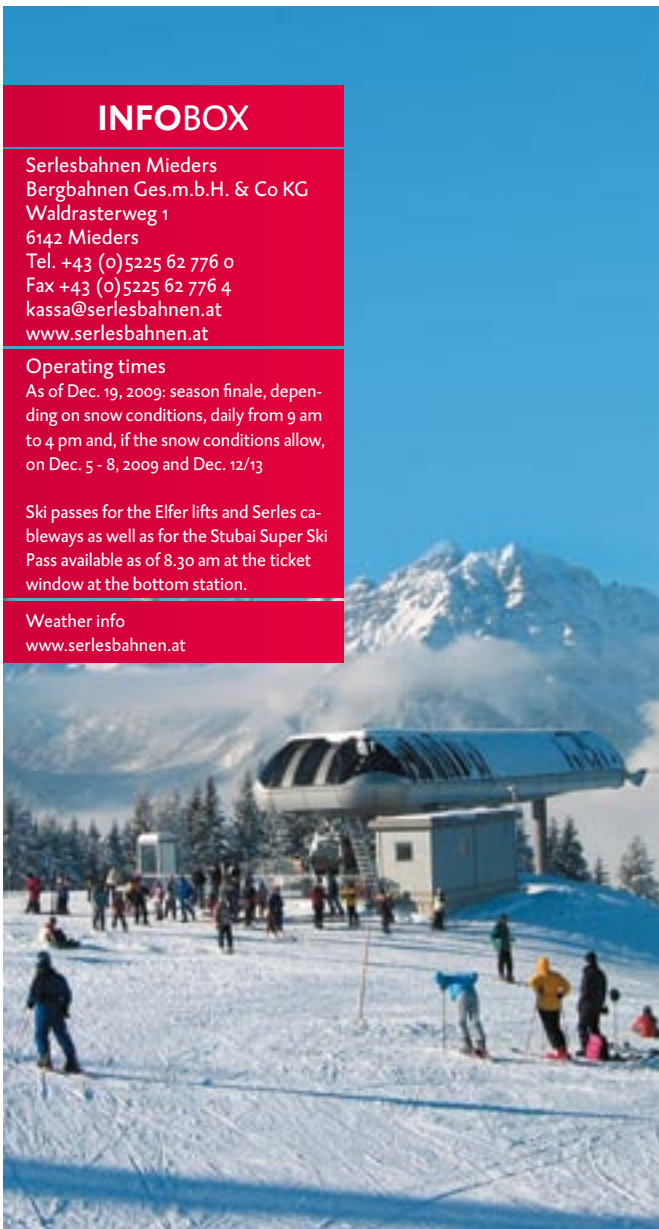
### TONS OF MOUNTAIN ADVENTURE AND WINTER FUN!

If there's no snow down in the valley, you'll find a winter wonderland here with us. Winter hiking is becoming more and more popular. When was the last time you were in a snow-covered forest? Let yourself be enchanted by the countryside

For everyone who prefers things a bit more sporty our high-altitude cross-country ski trails provide great panoramas of the Karwendel, Stubai and Zillertaler Alpen. Whether you're hiking or wearing snowshoes, cross-country or downhill skiing, tobogganing or basking in the sun, the mountains are always an incredible adventure!

### SEE IT FIRST – THE SERLES CABLEWAYS AT A GLANCE

- FAMILY -FRIENDLY means reasonably priced, straightforward and without stress!
- FABULOUS – the winter hiking trails through our forests.
- SPORTY – the high-altitude cross-country trails with their delightful panoramic views
- FUN-FILLED – tobogganing on one of our toboggan runs
- DELICIOUS smells waft from the kitchens of the alpine huts.
- PLAYFULLY learn how to ski – our platter lift at the bottom station.
- ROMANTIC – nighttime tobogganing on the illuminated tobogganing run: 7.30 - 9 pm on Tuesdays and Sundays
- TOBOGGAN RENTALS at the bottom station: € 5.00 per toboggan and day (€ 50.00 deposit or leave an ID)



**Ski runs**

- 1 Downhill
- 2 Waldrastock
- 3 Schneeboden
- 4 Ochsenschuss
- 5 Besserbrunnen
- 6 Kinderland

**Tobogganing runs**

- 1 Mountain term. – valley term. 7,5 km  
floodlit (nighttime tobogganing Fri & Sun)
- 2 Mountain station via the Sonnenstein  
inn to Fulpmes 8 km
- 3 via Maria Waldrast to Matrei  
floodlit 4 km

**Cross-country skiing trails**

- 1 — Serles trail 14 km  
(Start: mountain station, access points:  
Maria Waldrast, Gleins)
- 2 — Kaser trail 10 km
- 3 — Beginners' trail 5 km

**Hiking trails from mountain station with restaurant stops**

- 1 to the Ochsenhütte 20 min.
- 2 to Maria Waldrast 60 min.
- 3 to Gleins 60 min.
- 4 to the Sonnenstein 45 min.
- ... Snowshoe hiking route (not signposted)



**Sonnenstein – 1,400 m**

This Alpine inn can be reached along a tobogganing run/hiking trail from the mountain station or the Medrazer Stille. It's a 90-minute walk from the valley or 45-minute walk from the mountain station. 6 km long tobogganing run to Fulpmes and Medraz. Nighttime tobogganing possible from Monday to Saturday subject to prior reservation. Hot meals served during the day.

Tel. +43 (0)664 1212645

**Koppeneck-Hochserles mountain inn – 1,600 m**

Situated right at the mountain station, we offer our guests a sumptuous choice of food and drink at fair prices. Our sun deck is the perfect place to sit down and relax. Evening tobogganing (floodlit natural tobogganing run!) on Tue and Fri. We would also be delighted to host your private functions and Alpine hut evenings.

Tel. +43 (0)5225 62849 und +43 (0)699 11903681

**Gleinserhof – 1,420 m**

Wonderful winter hiking from the Serles mountain station or from Schönberg to Gleins in 1.5 hrs. Access to the Serles high-altitude cross-country ski trail, lighted natural toboggan run to Schönberg, sun deck, hot food served all day long, Tyrolean specialties, e.g. "Beuschl" (veal innards), Gleinser dumpling platter, "Kirchtagsskrapfen" (donuts), hunter's skillet. Closed Mondays.

Tel. +43 (0)5225/62100

**Maria Waldrast – 1,641 m**

This pilgrimage site with an adjoining cloisters inn and sun deck can be reached along a winter hiking trail from the mountain station or by car from Matri. Floodlit natural tobogganing run, crosscountry skiing trail. Double rooms with shower / WC. Hot meals served throughout the day. Open non-stop. Tel. +43 (0)5273 6219

**Ochsenhütte Mieders – 1,582 m**

Open continuously from mid-December to April (like the Serles cableways). The rustic alpine hut, Ochsenhütte, is situated directly next to the Ochsenlift and the (45km) cross-country ski trail. Enjoy home-style cooking with local products. Please make a reservation for alpine hut and toboggan evenings. Tel. +43 (0)664 4164031

**PRICES WITH THE STUBAI GUEST CARD**

See p. 6 for details of discounts

All prices in Euro plus EUR 2 deposit	Adults	Children (10–14 yrs.)	Young people/ Students*	Seniors 65+	Family*
<b>TOBOGGANING , HIKING</b>					
Uphill ride	8,00	4,00	7,00	7,50	19,00
Uphill and downhill ride	12,00	6,00	9,00	11,00	27,00
Downhill ride	7,00	3,50	5,00	6,50	16,50
Evening multi-ride pass	12,00	6,00	10,00	11,00	29,00
10 points	75,00	37,00	55,00	62,00	

<b>ALL ACTIVITIES</b>					
1 day	24,00	12,00	18,00	22,00	49,00
Morning until 1 pm	19,00	9,50	14,00	18,00	45,00
from 11 am	22,00	11,00	16,00	20,00	48,00
Midday 11 am – 2 pm	16,00	8,00	12,00	14,50	22,00
from 12 noon	19,00	9,50	14,00	18,00	45,00
from 1 pm	16,00	8,00	12,00	15,00	38,00
from 2 pm	14,00	7,00	10,00	13,50	33,00
1,5 days	39,00	19,50	29,00	34,00	93,00
2 days	46,50	23,00	34,00	37,00	109,00
2,5 days	57,00	28,00	42,50	47,00	135,00
3 days	68,00	34,00	49,50	55,00	159,00
4 days	83,00	41,50	63,00	68,00	195,00
5 days	97,00	48,50	73,00	79,00	229,00
6 days	109,00	55,00	82,00	89,00	259,00
3 out of 5 days	69,00	35,50	53,00	57,00	165,00
4 out of 6 days	87,00	43,50	65,00	69,00	205,00
5 out of 7 days	99,00	49,50	76,00	79,00	235,00

From 6 days and season passes on request!

<b>PRACTICE LIFTS</b> (platter lift at the bottom station of the Serles cableways)					
from 9 am	12,00	6,00	9,00	10,50	28,00
from 12 noon	9,00	4,50	7,00	8,50	20,00
from 1 pm	8,00	4,00	6,00	7,00	19,00
2 days	30,00	15,00	20,00	27,00	69,00
3 days	40,00	20,00	30,00	36,00	95,00

<b>CROSS-COUNTRY SKIING</b> (Serles cableways - Koppeneck-Gleins-Waldrast)					
1 day	12,00	6,00	9,00	11,00	29,00
up to 3 days	27,00	14,00	19,00	25,00	65,00
up to 5 days	43,00	22,00	29,00	35,00	99,00



**\* FAMILY PASS:**  
VALID FOR TWO PARENTS AND  
ALL OF THEIR CHILDREN  
(UP TO 15 YRS.)

\* Young people (15-18 years) and students up to age 27 (ID required)



## Information, reservations and bookings:

Tourist board Stubai Tirol

Tel. +43 (0)501881-0 | [info@stubai.at](mailto:info@stubai.at)

[www.stubai.at](http://www.stubai.at)

## Getting here

By car: From the Olympic city of Innsbruck it takes about 20 minutes to reach the Stubaital along the Brenner autobahn (Europa bridge). Take the Schönberg exit (Schönberg is the first village in the Stubaital), then continue to Mieders, Telfes, Fulpmes and Neustift. Alternatively, take the tollfree option along the old Brenner Road to Schönberg (about 35 mins drive).

Public transport: By rail, air or bus to Innsbruck. From Innsbruck main railway station there is a direct bus service to the Stubaital (terminating at Neustift/Mutterberg). Busses run daily. Timetable available at [www.stubai.at](http://www.stubai.at)

You can also get to Fulpmes and Telfes on the Stubaital railway departing from Innsbruck main railway station. Many accommodation providers offer a transfer to the Stubaital valley.

Ski bus from Innsbruck to Muttergalm (bottom station) Gletscherbahn. Within the Stubaital from and to all cableway bottom stations. There is also a ski bus service from Matrei to the Stubai Glacier and back.



[www.stubai.at](http://www.stubai.at)