



be DISCOVERED.



STUBAI CABLEWAYS
WINTER 08/09



INFOBOX

Schlick 2000 Schizentrum AG
Dorfzentrum
6166 Fulpmes
Tel. bottom station +43 (0)5225 62321
Tel. office +43 (0)5225 62270
Fax office +43 (0)5225 64243
info@schlick2000.at
www.schlick2000.at

Operating times in winter
Kreuzjochbahn: first ride up: 8.30 am
Last ride down from midway station at
4.30 pm; All other lifts & cableways from 9
am to 4 pm; Ticket office: 8.30 am – 5 pm
Village centre office: Mon – Fri, 8 am to 12
noon and 2 pm to 6 pm;
Sat 5 pm – 6.30 pm, Sun 8 am – 10 am

Snow and weather reports
Panorama-TV:
3SAT (daily in the morning until 9 am)
Stubai TV (all day)
Wetterhotline: +43 (0)5225 62970
www.schlick2000.at mit Webcam

5
MINUTES FROM
THE STUBAITAL
MOTORWAY EXIT

WINTER AT SCHLICK2000



22
23

LARGEST SKI AREA IN THE FRONT SECTION OF THE STUBAITAL

The diverse ski area – accessible in 15 minutes from Innsbruck via the motorway (A13) – offers winter athletes a full program. The high valley of Schlick 2000 provides a snow guarantee thanks to the favorable natural snow location and extensive snow-making down into the valley. 10 rustic Alpine huts, lodges, bars and restaurants tempt the visitor with typically Tyrolean dishes and legendary Tyrolean hospitality.

SEE IT FIRST – SCHLICK 2000 AT A GLANCE

- WIDE CHOICE of different ski funs featuring all levels of difficulty
- FAMILY SKI AREA with lots of PLACES TO STOP AT FOR A BREAK
- 'RONNY'S KINDERLAND' with qualified child carers
- STUBAI PARK SCHLICK 2000 and FREE NATURE PARK for boarders and free skiers
- FREESTYLE FUN in the entire area
- SPEED COURSE – measure your speed in the area
- SKILINE – Who can tackle the greatest difference in altitude in one day?
- TOBOGGANING AND CROSS-COUNTRY SKIING FUN as well as SNOWSHOE AND WINTER HIKING TRAILS
- EXCELLENT THERMALS in the area for paragliders and hang-gliders





SKI RUNS

- 1 Kreuzjoch – Schlick – Froneben
- 1a Zirmachalm – SL Kreuzjoch
- 2 Sennjoch Ost
- 3 Sennjoch West
- 4a Sennjoch – Zirmachalm
- 4b Unterer Burgstall
- 5 Galtalm
- 6 Practice area Schanzlin
- 7 Downhill valley run
- 1 Ski route Kreuzjoch

Piste ● easy ● inter-mediate ● difficult

- Tobogganing run / hiking trail
- Snowshoe hiking trail (2,5 km / 2 hours)
- ⚡ Stubaipark Schlick 2000
- ⚡ Free Nature Park
- ⚡ Speed course
- ⚡ Cross-country
- ⚡ Tobogganing runs Ronny's Kinderland
- ⚡ Rescue service
- ⚡ Indoor car park
- ⚡ Hang-gliding / paragliding
- ⚡ Pistes with snowmaking
- ⚡ KeyCard return point / bottom station right by the bottom station

Cableways and lifts

- A Kreuzjochbahn Stage I
- B Kreuzjochbahn Stage II
- C 4-seater chairlift Sennjoch
- D Kreuzjoch
- E Zirmachalm I
- F Zirmachalm II
- G Schlickerboden
- H Galtalm
- I Schanzlin
- J Ronny's button lift

WINTER PRICES

DEC. 20, 2008 – JAN. 11, 2009 / JAN. 31, 2009 –
MARCH 1, 2009 / MARCH 28, 2009 – APRIL 13, 2009

PRICES WITH STUBAI GUEST CARD (prices without the Guest Card are 10% higher) For details of discounts see p. 6

All prices in Euro. plus EUR 2 deposit	Adults	Children (10–14 yrs.)	Youth (15–18 yrs.)	Seniors 65+
Day ski passes (including shuttle bus service to and from the lifts)				
from 8.30 am	29,50	15,00	19,20	23,60
from 11.00 am	27,00	13,80	17,60	21,60
from 12.00 noon	24,00	12,20	15,60	19,20
from 1.00 pm	21,00	10,70	13,70	16,80
from 2.00 pm	18,00	9,20	11,70	14,40
Morning ski pass				
until 1 pm	24,00	12,20	15,60	19,20
Taster ticket for beginners (Schanzlin and Schlickerboden practice lifts)				
from 8.30 am	20,50	10,50	14,40	17,40
Multiple-day ski passes (including shuttle bus service to and from the lifts)				
1 ½ days, valid from 12	43,50	22,20	28,30	34,80
2 days	56,00	28,60	36,40	44,80
1 ½ days, valid from 12	65,50	33,40	42,60	52,40
3 days	85,00	43,40	55,30	68,00
4-day pass	110,00	56,10	77,00	93,50
5-day pass	128,50	65,50	90,00	109,20
6-day pass	148,50	75,70	104,00	126,20
7-day pass	163,50	83,40	114,50	139,00
8-day pass	179,00	91,30	125,30	152,20
9-day pass	195,00	99,50	136,50	165,80
10-day pass	209,50	106,80	146,70	178,10
14-day pass	262,50	133,90	183,80	223,10

Upon request we should be pleased to send you our prices for 11-day to 21-day ski passes.

Ski passes with free choice of days (including shuttle bus service to and from the lifts)				
3 out of 4 days	86,00	43,90	60,20	73,10
4 out of 5 days	120,00	61,20	84,00	102,00
5 out of 6 days	139,00	70,90	97,30	118,20
5 out of 7 days	143,50	73,20	100,50	122,00
7 out of 10 days	173,50	88,50	121,50	147,50
10 out of 14 days	226,50	115,50	158,60	192,50

Single tickets for tobogganists, hikers and cross-country skiers – valid for the whole season				
Middle st. / mountain st.	5,20/12,60	2,80/6,70	4,70/10,70	4,70/10,70

Paragliding	Schlick2000	Flypark	Hang-glider transport 2,00	
Paragliding single ride	9,00			
1 day of paragliding	19,00	26,00		
1/2 day of paragliding	15,00	21,00		
Book of 10 tickets	81,00	105,00		
Season pass	99,00	199,00		
Yearly pass	179,00			

INTERIM SEASON

JAN. 12-30, 2009 /
MARCH 2-27, 2009

PRICES WITH STUBAI GUEST CARD (prices without the Guest Card are 10% higher) For details of discounts see p. 6

All prices in Euro. plus EUR 2 deposit	Adults	Children (10–14 yrs.)	Youth (15–18 yrs.)	Seniors 65+
Day ski passes (including shuttle bus service to and from the lifts)				
from 8.30 am	26,60	13,50	17,30	21,20
from 11.00 am	24,30	12,40	15,80	19,40
from 12.00 noon	21,60	11,00	14,00	17,30
from 1.00 pm	18,90	9,60	12,30	15,10
from 2.00 pm	16,20	8,30	10,50	13,00
Morning ski pass				
until 1 pm	21,60	11,00	14,00	17,30
Taster ticket for beginners (Schanzlin and Schlickerboden practice lifts)				
from 8.30 am	18,50	9,50	13,00	15,70
Multiple-day ski passes (including shuttle bus service to and from the lifts)				
1 ½ days, valid from 12	39,20	20,00	25,50	31,30
2 days	50,40	25,70	32,80	40,30
1 ½ days, valid from 12	59,00	30,10	38,30	47,20
3 days	76,50	39,10	49,80	61,20
4-day pass	99,00	50,50	69,30	84,20
5-day pass	115,70	59,00	81,00	98,30
6-day pass	133,70	68,10	93,60	113,60
7-day pass	147,20	75,10	103,10	125,10
8-day pass	161,10	82,20	112,80	137,00
9-day pass	175,50	89,60	122,90	149,20
10-day pass	188,66	96,10	132,00	160,30
14-day pass	236,30	120,50	165,40	200,80

Upon request we should be pleased to send you our prices for 11-day to 21-day ski passes.

Ski passes with free choice of days (including shuttle bus service to and from the lifts)				
3 out of 4 days	77,40	39,50	54,20	65,80
4 out of 5 days	108,00	55,10	75,60	91,80
5 out of 6 days	125,10	63,80	87,60	106,40
5 out of 7 days	129,20	65,90	90,50	109,80
7 out of 10 days	156,20	79,70	109,40	132,80
10 out of 14 days	203,90	104,00	142,70	173,30

**Pre-season and post-season – 20% off from start of season until
Dec. 19, 2008 and April 14-19, 2009. Under-10s ride for free throughout the season when
accompanied by an adult!**

RONNY'S KINDERLAND



In the ski area Schlick 2000 our private ski school "Kinderneest" can be found at the Froneben middle station. A room for playing and warming up with a trained staff to care for all children – not only school-age children! Little ones as of 3 months are welcome. In addition to play equipment there is a separate quiet room and bedroom as well as a changing table. Advance reservation is not required. Payment is made directly at the Kinderneest. Opening hours: daily from 9.30 am to 3.30 pm. Information available at the ski school office of the Stubai Ski School at the Froneben middle station.

Main ski school office in Fulpmes

Kirchplatz, in the same building as the Stubai Tirol tourist board
Director: Sepp Rettenbacher · 6166 Fulpmes · Austria · schischule-stubai@eunet.at
Tel./Fax +43/5225/64764 Mobile: +43/664/3332222
Mon- Fri 9 am-11 am and 3 pm-6 pm Sat + Sun 9 am-12 noon and 3 pm-6 pm

Further ski school registration offices:

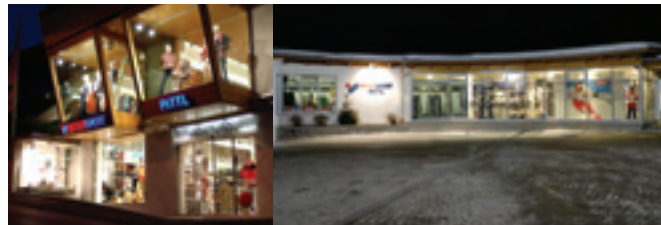
Schlick 2000 bottom station – right by the ski bus Stopp - Tel. +43 (0)5225 64 4 41
Froneben midway station - Schlick2000 - Tel. / Fax +43 (0)5225 64 9 88 · www.schischule-stubai.at

Please understand that for safety reasons, the use of Kinderland and its three conveyor belts is reserved exclusively for the Stubai Tirol ski school.



A superb shopping experience!

Enormous selection of winter sports equipment, boots, clothing and accessories.



Don't drag along all that kit with you, hire it instead!

Treat yourself to the very best! **Free depot for our hire equipment!**



Save yourself the bother of transporting your kit and always enjoy a great choice of the latest winter sports equipment. At INTERSPORT PITTL your preferred skis, snowboards or fun equipment – all top quality – await you on your arrival!

Intersport Pittl – the boots expert!

We guarantee that your ski boots will fit you perfectly!

Made-to-measure insole! Can be exchanged after trial run!

6166 Fulpmes, Kirchstraße 1

Tel. +43 (0)5225 62428
Fax + 43 (0)5225 62428-14
Opening times:
Mon-Fri 8 am–12 noon and 3 pm–6.30 pm, Sun and public holidays as and when required

Ski hire also available in the village

Tel. +43 (0)699 17622777
Opening times:
Mon-Fri 8 am–12 noon and 3 pm–6.30 pm, Sun and public holidays as and when required
Schlick 2000 bottom station
Tel. +43 (0)5225 64115
Opening times: daily from 8.15 am–5 pm

intersport-pittl@aon.at · www.intersport-pittl.at



**FREE
LOUNGE CHAIR
RENTALS**

Panorama Restaurant Kreuzjoch—2.136 m
At the mountain station of the Kreuzjoch cable car with fascinating panoramic views. Very popular restaurant with the highest pizzeria in the skiing area. We'll pamper you with traditional Kaiserschmarren, baked potatoes, etc. Sumptuous salad buffet and attractive offers for children and seniors.

VIP roofed wicker beach chairs, Internet workstation, lockers. Sunny plateau with ice bar and free lounge hire! Big snow hill with 'snow stalker' for kids. **Tel. +43 (0)5225 62321-500**
(Fax-Dw. 519), panorama@schlick2000.at



Sennjochhütte – 2.225 m

Situated at the mountain station of the 4-seater Sennjoch chairlift. Highest and sunniest venue for drinks and refreshments in the Schlick area. Enjoy genuine Tyrolean hospitality at the ice bar or in the wonderfully rustic restaurant. **Tel. +43 (0)5225 62409**, schlickeralm@fulpmes.at
www.schlickeralm.at



Zirmachalm – 1.935 m

New this winter – the first silver service restaurant in Schlick 2000. So go on, treat yourself and enjoy the choice of delicious dishes we prepare freshly in our kitchen and superb selections from our wine list. Whether in the cosy lounge (heated by our rustic tiled stove) or on the sun decks, you're sure to be delighted by our "Zirmachalm". **Tel. +43 (0)664 8407895**, www.schlickeralm.at
schlickeralm@fulpmes.at



Schlicker Alm – 1.645 m

Situated right at the bottom station of the 4-seater Sennjoch chairlift. Marvelous sundeck, separate non-smoking room and children's playroom. Whether your preference is for cheese spaetzel or cut-up and sugared pancake with raisins (Kaiserschmarren), for pizza or a salad buffet, here there's something to match each and every taste. **Tel. +43 (0)5225 62409**, schlickeralm@fulpmes.at
www.schlickeralm.at



Brugger Alm mountain restaurant – 1.350 m

Located at the midway station of the Kreuzjoch cable car service. Après-ski with an unbeatable atmosphere every day throughout the winter at the parasol bar. Enjoy breathtaking views from the sun deck. The wonderfully cosy lounges furnished in a traditional Tyrolean style are ideal for hosting celebrations and Alpine hut evenings, etc. **Tel. +43 (0)5225 64644**, bruggeralm@aon.at



Fronebenalm – 1.306 m

With his captivating music, the landlord at this Alpine lodge provides a wonderful highlight during an unforgettable day's skiing. Large sun deck and Tyrolean specialties. Situated in the heart of the skiing area below the midway station of the Kreuzjoch cable car service this pleasant lodge is right by the ski run which takes you down to the valley. **Tel. +43(0)5225-62211**, bruggerhof@stubaital.at



Schlussliacht

The ultimate après-ski bar located directly at the bottom station. Bid farewell to a day on the slopes here. Meeting place with hot tunes for young people and those young-at-heart. info@schlick2000.at

SKI SCHOOLS

Stubai Ski School

Director: Sepp Rettenbacher
Kirchplatz (building of the Stubai Tirol Tourist Board), 6166 Fulpmes
Tel./Fax: +43 (0)5225 64764, Mobile: +43 (0)664 3332222,
schischule-stubai@eunet.at, www.schischule-stubai.at

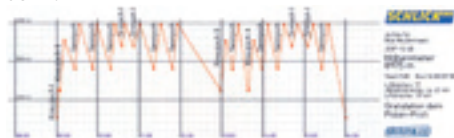


FULPMES SKI SCHOOL

Principal: Kurt Hupfaut
Bahnstraße 7, 6166 Fulpmes
Tel. +43 (0)5225 62317, Mobile +43 (0)664 3429526,
Fax +43 (0)5225 62062, k.hupfaut@tirol.com, www.stubai.cc



SKILINE provides a record of the total number of meters you've been up and down, the lifts you've used and an indication of the kilometers you've skied down.



HOW MANY ALTITUDE METRES DID YOU MANAGE?

Compare your performance with that of your skiing partner! Schlick 2000 gives you the opportunity to calculate the number of meters in altitude conquered by entering your ski pass number at the end of the ski day at the terminal at Panorama Restaurant Kreuzjoch, at the terminal at the bottom station or on the Internet at www.schlick2000.at.

SPEED SECTION



Find out how fast you ski (on piste 3)!



INFO CORNER

right by the start area at the Kreuzjoch panoramic restaurant, where you can obtain information on the skiing area and the Parafly flight school.

INTERNET POINT

Directly at the mountain station at Panorama Restaurant Kreuzjoch. Here you will receive information about the ski area and can use the Internet (for a small fee).

FREE SKI BUS AND PARKING SERVICE

for all visitors with a valid ski pass within the Stubaital. Timetables available from the Stubai Tirol tourist board. Use our free parking spaces, low-cost underground car park and the free shuttle bus from the car park to the bottom station.

TOP QUALITY PISTES

Schlick 2000 is also well known for the excellent way its pistes are groomed. Modern snow-making facilities provide snow-assured ski runs, including the new downhill run to the valley.

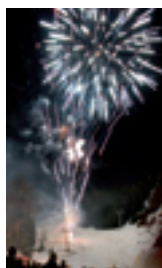


DEC. 6, 2008: "WINTER OPENING" WITH SUPER-TRAMP COVER SPECIAL "BREAKFAST IN L.E."

Open-air concert right by the bottom station. Please note: admission to the concert is free with a valid ski pass!

As of 8.30 pm: "Night Show"

Spectacular evening performance by the Stubai Ski School and Schlick 2000. Ski instructor demo, slide show, paragliding show, huge fireworks display, live music, etc.



GO FOR SKI YOUTH DAYS

Jan. 10-11, 2009, Jan. 17-18, 2009, Jan. 24-25, 2009
-50% for young people and children

JAN. 25 TO MARCH 29, 2009: "SUN SKIING"

Live music every Sunday from 11.30 am to 1:30 pm at Panorama Restaurant Kreuzjoch.

FEB. 1, 2009: "WINTER TOUR LIFE RADIO"

10 am – 4 pm at the Kreuzjoch. Fun, games and presentation with "Life Radio" directly from the ski area.



MARCH 1, 2009: "SCHLICHER SNOW PARTY" WITH TOP COVERBAND "HIGHLIGHTS"

Open-air concert at the bottom station as of 3 pm. Already a "must" for all ski and music fans. Free admission!

Every Thursday. "Ladies' Day"

During the mid-season from Jan. 12-30, 2009, March 2-27, 2009

Every Friday: "Altitude Day"

Who conquers the most meters in altitude in one day? Weekly competition and listing of the top three at Panorama Restaurant Kreuzjoch (mountain station) at 2.30 pm – great prizes await the winners!



APRIL 19, 2008: "COUNTDOWN PARTY"

The annual close of the skiing season at the Kreuzjoch panoramic restaurant with Skiline – Competition: 'How many metres difference in altitude did you ski?' followed by prize-giving ceremony for our season and RegioCard ticket holders.



SUMMER PREVIEW



- **NEW:** short, barrier-free panorama path from the Kreuzjoch to the "StubaiBlick" observation deck
- hiking trails featuring all levels of difficulty to the surrounding Alpine huts, lodges, mountain pastures and summits.
- panoramic lake with adventure trail to the Schlicker Alm.
- nature trail with Alpine flora, free guided tours.
- Alpine adventure park: rock climbing practice area for sports enthusiasts.
- Grosse Ochsenwand fixed rope route 800 meters in elevation
- Children's alpine adventure day with the Stubai Summer Camp
- Big bouncy and climbing castle for children at Panorama Restaurant Kreuzjoch (mountain station)

Wilde Wasser

PARK

New in Stubai as of 2008!

INFORMATION
AVAILABLE AT THE
STUBAI TIROLTOURIST
BOARD
www.wildewasserpark.at

Information, reservations and bookings:

Tourist board Stubai Tirol

Tel. +43 (0)501881-0 | info@stubai.at

www.stubai.at

Getting here

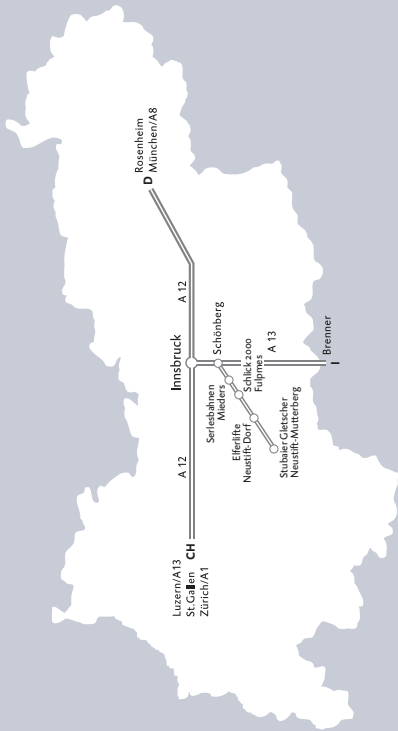
By car: From the Olympic city of Innsbruck it takes about 20 minutes to reach the Stubaital along the Brenner autobahn (Europa bridge). Take the Schönberg exit (Schönberg is the first village in the Stubaital), then continue to Mieders, Telfes, Fulpmes and Neustift. Alternatively, take the tollfree option along the old Brenner Road to Schönberg (about 35 mins drive).

Public transport:

By rail, air or bus to Innsbruck. From Innsbruck main railway station there is a direct bus service to the Stubaital (terminating at Neustift/Mut-terberg). Busses run daily. Timetable available at www.stubai.at. You can also get to Fulpmes and

Telfes on the Stubaital railway departing from Innsbruck main railway station. Many accommo-dation providers offer a transfer to the Stubai-tal valley.

Ski bus from Innsbruck to Muttergalm (bot-tom station) Gletscherbahn. Within the Stubaital from and to all cableway bottom stations. There is also a ski bus service from Matri to the Stubai Glacier and back.



www.stubai.at