



# Ski Banff's Sunshine

## SKIERS' RESPONSIBILITY

### SKI AREA BOUNDARIES

The Ski Patrol operates only within Sunshine's ski area boundaries, which are roped and signed. Skiers should stay within the area boundary and obey all posted signs, for their own safety and for the safety of other skiers who may follow their tracks.

### SKI AREA CLOSURES

The Ski Patrol may close runs. Persons skiing these areas will have their lift tickets revoked without warning. It is an offence under the National Parks Act to enter areas marked "closed due to avalanche hazard".

### SKIERS' RESPONSIBILITY CODE

1. Ski under control and in such a manner that you can stop or avoid other skiers or objects.
2. When skiing downhill or overtaking another skier, you must avoid the skier below you.
3. You must not stop where you obstruct a trail or are not visible from above.

### SKIERS' RESPONSIBILITY

Alpine skiing is a recreational activity that continually challenges the human spirit. Natural and manmade obstacles are part of the challenge of man against the mountain, but collisions with people or other objects can cause severe and permanent injury to you and others. Ski in control. Be aware, ski with care.

Any lift ticket may be revoked without compensation for skiing practices which jeopardize the safety of other skiers. Please follow these safe skiing rules:

4. When entering a trail or starting downhill, yield to other skiers.
5. All skiers shall use devices to prevent runaway skis.
6. You shall keep off closed trails and posted areas and observe all posted signs.



### SKI HINTS

#### Beginner and Intermediate Skiers

To enjoy Sunshine's great variety of skiing, please study the area guide map or take a free Sunshine guided tour.

**Expert Skiers:** The Great Divide, TeePee Town, Standish chairlifts and WaWa T-bar are favourites for the experts.

### ON BUSY DAYS

A few tips to get those extra runs in. Arrive early. The gondola starts at 7:30 a.m. Ski the village lifts in the morning when you have the mountain to yourself. Enjoy lunch before 11:30 AM or after 1:30 PM. Try to avoid using Angel between these hours and instead ski the Great Divide, TeePee Town or Wheeler chairlifts.

Access Divide via Strawberry and Assiniboine, or via Fireweed and TeePee Town.

### IN BAD LIGHT

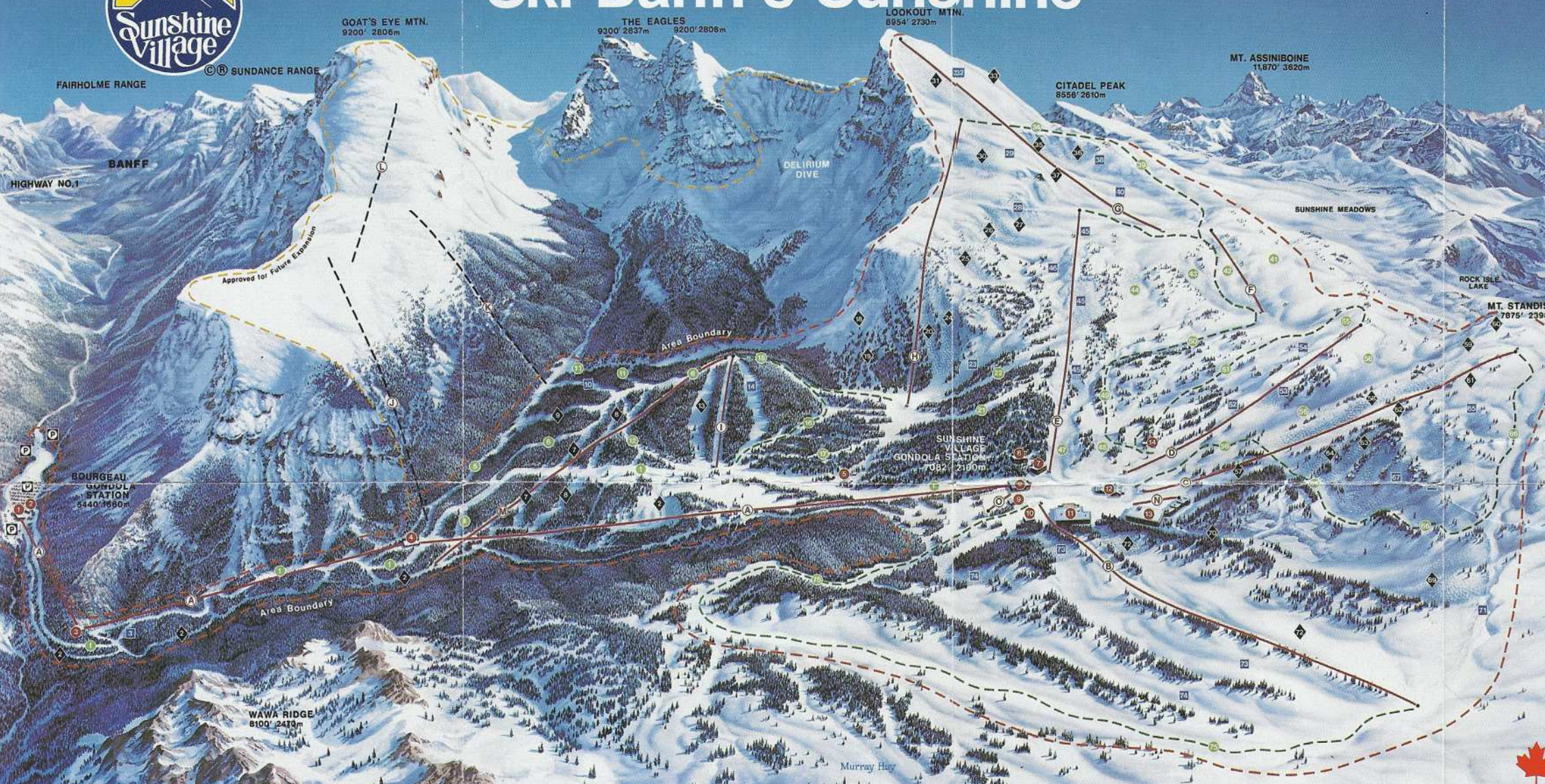
Ski the lower lifts in the trees, especially Wheeler chairlift, Fireweed and WaWa T-bars, as well as the gondola.

### DAY'S END

Trapper Bill's Lounge or Chimney Corner Lounge are great apres ski spots to share your day with your friends.

Glide home on the gondola or take the Bourgeau Expressway. This run, for all skiing abilities, is patrolled until 4:30 PM.

Remember, the mountains are just as cold and lonely tonight as they were 100 years ago. Ski with a friend.



Observe these markers on the map and on the Mountain. They will help you choose your run.

Easiest

More Difficult

Most Difficult

Easiest Way Down

Area Boundary

### SUNSHINE VILLAGE SKI RUNS

- |                     |                     |                       |                       |                          |
|---------------------|---------------------|-----------------------|-----------------------|--------------------------|
| 1. Bourgeau Express | 16. Larch Glade     | 31. Downhill          | 46. Roller Coaster    | 61. Standish Run         |
| 2. Canyon Trail     | 17. "T" Weed        | 32. South Divide      | 47. Angel Gully       | 62. Standish Face        |
| 3. B-Line           | 18. The Shoulder    | 33. Bye Bye Bowl      | 48. Pandemonium       | 63. Donkey's Tail        |
| 4. Juniper          | 19. Bushwackers     | 34. Abominable Bench  | 49. Picadilly         | 64. The Virgin           |
| 5. Everlasting      | 20. Schoolmarm      | 35. Boundary Bowl     | 50. Upper Angel Gully | 65. Bunker's Run         |
| 6. Ridge Run        | 21. Pilgrim's Trail | 36. Piste Noir        | 51. Rock Island Road  | 66. Creek Run            |
| 7. Goat Chicken     | 22. Packer's Trail  | 37. 205               | 52. Ski Machine       | 67. Bunker's Bowl        |
| 8. Wintergreen      | 23. Barner's Bowl   | 38. Perverse Traverse | 53. Strawberry Face   | 68. Little Bunker's Bowl |
| 9. Heathcote        | 24. Tee Pee Town    | 39. Cat Track         | 54. Boudry's Bowl     | 69. Parle Basin          |
| 10. Bluebell        | 25. Little Angel    | 40. Lower Divide      | 55. Rock Isle Face    | 70. Waterfall            |
| 11. Forget-Me-Not   | 26. Big Angel       | 41. Assiniboine Trail | 56. The Dell Valley   | 71. Parle Traverse       |
| 12. Emmaline        | 27. Angel Flight    | 42. Molstar Course    | 57. Showboat          | 72. Birdcafe             |
| 13. Jackrabbit      | 28. Angel Traverse  | 43. Highway 1         | 58. Jerry's Run       | 73. Wa-Wa Bowl           |
| 14. Short & Sweet   | 29. Great White Way | 44. Springhill        | 59. Headwall          | 74. Tin Can Alley        |
| 15. Miss Gratz      | 30. Super G         | 45. White Way         | 60. Laryx Run         | 75. Meadow Park          |

### SUNSHINE VILLAGE LIFT SYSTEM

	Vertical	Length
A. The Gondola	1627' 496 m	14,084' 4293 m
B. Wa-Wa T-Bar	550' 168 m	2298' 700 m
C. Standish Chair	705' 215 m	2793' 851 m
D. Strawberry Chair	448' 137 m	2535' 773 m
E. Angel Chair	637' 194 m	3765' 1148 m
F. Assiniboine T-Bar	295' 90 m	1813' 553 m
G. Great Divide (Brewster) Chair	1176' 358 m	3735' 1138 m
H. Tee Pee Town Chair	1282' 391 m	4039' 1231 m
I. Fireweed T-Bar	278' 85 m	921' 281 m
J. Future Chair	975' 297 m	2700' 823 m
K. Future Chair	760' 232 m	1850' 564 m
L. Future Chair	837' 255 m	2850' 869 m
M. Wheeler Chair	635' 194 m	3991' 1216 m
N. Ski School Tow		
O. Kid's Kampus Tow		

### SUNSHINE SERVICES

- |                                |                           |                                    |                            |
|--------------------------------|---------------------------|------------------------------------|----------------------------|
| 1. BOURGEAU GONDOLA STATION    | 5. MAINTENANCE AREA       | 11. SUNSHINE DAYLODGE              | 15. SUNSHINE INN & TERRACE |
| • Tickets                      |                           | • Sport Chek Ski Shop              | • Accommodation            |
| • Customer Service             |                           | • Barbeque Area                    | • Eagle's Nest Dining Room |
| • Hotel Luggage Check-in       |                           | • W.D. Saloon - Wine & Draught Bar | • Chimney Corner Lounge    |
| • Snack Bar                    |                           | • The Deli                         | • Sauris, Hot Tubs         |
| • Washrooms                    |                           | • Trapper's Restaurant & Lounge    | • Washrooms                |
| • Telephone                    |                           | • Cafeteria                        | • Telephones               |
|                                |                           | • Washrooms • Telephones           | • General Store            |
|                                |                           |                                    | • Snacks Bar               |
| 2. SPOKEN EDGE SHOP            | 6. 7. 10. STAFF RESIDENCE | 12. OLD SUNSHINE LODGE             | 16. PARK WARDEN'S CABIN    |
| • Rentals - skis, boots, poles |                           | • Ski School                       |                            |
| • Ski Tune-ups                 |                           | • Lockers • Telephone              |                            |
| • Souvenirs                    |                           | • Lost & Found                     |                            |
|                                |                           | • Snack Bar                        |                            |
|                                |                           | • Brown Bag Picnic Area            |                            |
|                                |                           | • Washrooms                        |                            |
|                                |                           | • Administration Offices           |                            |
| 3. GONDOLA CURVE STATION       |                           |                                    |                            |
| • Loading & Unloading          |                           |                                    |                            |
| 4. GONDOLA GOAT'S EYE STATION  |                           |                                    |                            |
| • Loading & Unloading          |                           |                                    |                            |

**Sunshine Village**  
Telephone (403) 762-4000  
P.O. Box 1510  
Banff, Alberta, Canada  
T0L 0C0

PRINTED IN CANADA



**Snow Phone:**  
**Calgary: 235-SNOW**  
**Edmonton: 481-SNOW**  
**Banff: 762-4000 (Ext. 140)**

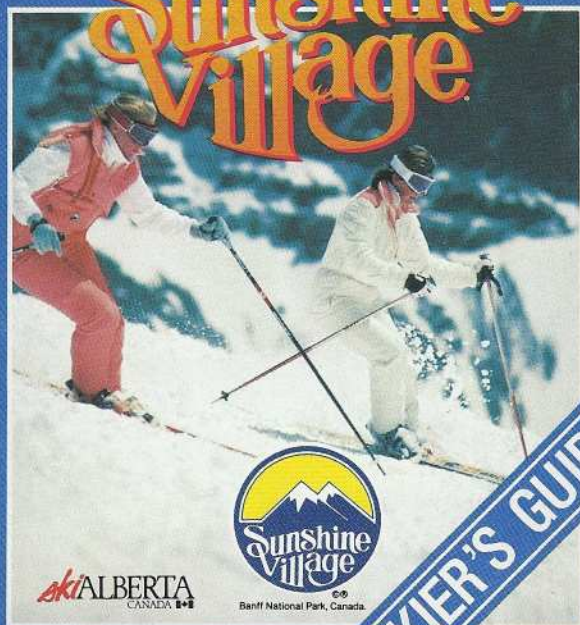
**LOCKERS/LOST AND FOUND/INFORMATION**  
 Staff at the Ski School desk located in the Old Sunshine Lodge (log cabin) will answer any questions you have. Day storage lockers and lost and found are also located here. Open 8:00 AM to 5:00 PM.

Customer Service, located in the parking lot Gondola Terminal, is also ready to answer any questions you may have.

Sunshine's Security Office may be reached by dialling 169 on any courtesy phone.

**HAVE FUN THIS WINTER**  
**SKI BANFF'S**

**Sunshine Village**



**SKI ALBERTA**  
 CANADA



Banff National Park, Canada

**SKIER'S GUIDE**

## SUPER EATING AND ATMOSPHERE

Sunshine offers a complete eating and apres-ski experience offering a total of 10 restaurants, snack bars, lounges and bars.

### SUNSHINE DAYLODGE

**TRAPPER BILL'S LOUNGE**

Located on the third level. Famous for its delicious burgers, salads and apres ski. Fully licensed. Open daily from 10:00 AM to 5:00 PM.

### CAFETERIA

Located on the second level, the cafeteria is open for breakfast, snacks and lunch. Open daily from 7:30 AM - 4:30 PM.

### SALOON

Located on the second level, this saloon relives the old west. Draught, beer, wine and gluhwein are served from the long bar. Open from 10:00 AM to 5:00 PM.

### SUNSHINE DELI

Located on the main floor. The Deli is a favourite for "create your own" sandwiches and serves beer and wine. Open 10:00 AM to 4:30 PM.

### SUNSHINE INN

The Sunshine Inn's food and beverage facilities are open for all skiers.

### CHIMNEY CORNER LOUNGE

The warmth of the fireplaces make this fully licensed cozy lounge a popular spot for light meals and apres ski. Open 10:00 AM to 12:00 PM.



### EAGLE'S NEST DINING ROOM

All skiers are welcome to this full service dining room. Hours are 7:00 AM to 9:30 AM for breakfast, 11:30 AM to 2:30 PM for lunch and 5:30 PM to 9:00 PM for supper. Call extension 146 for reservations.

### GENERAL STORE SNACK BAR

Hot drinks, snacks, film, souvenirs, toiletries and reading material are available in the warmth of the General Store. Open daily from 10:00 AM to 9:30 PM.

### OLD SUNSHINE LODGE

### BROWN BAG LUNCH AREA & SNACK SHACK

Relive Sunshine's history in our quaint log cabin built in 1936. The walls are filled with memorabilia and the fireplace is always inviting. The Snack Shack, open weekends and holidays, provides light snacks and beverages. Open 9:30 AM to 3:30 PM.

### SUN DECKS

Spring is a special time on Sunshine's many licensed barbecue decks. Relax, take in the sun and have one of our famous burgers.

### VILLAGE DONUTS & DELI

Located in the parking lot Gondola Terminal. The Village Donut Shop is convenient for skiers arriving or leaving the ski slopes. Hot and cold drinks, fresh donuts and snacks are available all day long until 5:00 PM.



### FREE GUIDED MOUNTAIN TOURS

Tours leave daily at 10:30 AM plus Friday through Monday at 1:00 PM. Meet at the Mountain Map located in front of the Sunshine Daylodge.

### SPORT CHEK AT THE VILLAGE SKI SHOP

Located on the main floor of the Daylodge, a complete selection of ski equipment, accessories, souvenirs, ski repairs and high performance demo skis are available.

### SPOKE 'N' EDGE RENTAL AND REPAIRS

Located in the parking lot Gondola Terminal. A complete selection of ski rental equipment (downhill, cross country and telemark) is available.



### SKI PATROL

Sunshine's professional Ski Patrol is located under the Sunshine Gondola Terminal and on duty during skiing hours. In the event of any emergency, mark the accident by placing the injured person's skis upright in the snow, crossing the ski tips to form an "X" uphill from the accident. Inform the nearest lift attendant or Sunshine employee of the exact location (note trail, lift tower, etc.) for quick response by our Ski Patrol.

lessons and repairs for all skis. Open 8:00 AM to 5:00 PM.

**Hours of facilities and services may change seasonally or at any time.**

Photo credits: Alex Pytlowany, Bruno Engler, Chris Speedie

## WELCOME TO SUNSHINE!

If you have any questions, please ask any of our friendly, helpful staff.

### PARKING AND BOURGEOU GONDOLA TERMINAL

Sunshine's six passenger gondola is ready to lift you to the heart of Sunshine Village and our spectacular Rocky Mountain skiing.



All gondola passengers purchase their lift passes in the parking lot Gondola Terminal, the first of 4 stations.

**PICK UP YOUR RENTAL SKIS BEFORE BOARDING THE GONDOLA!** The Spoke 'N' Edge Ski Rental Shop, located in the parking lot, carries a complete line of ski rentals and accessories, and offers repair services.

The Sunshine Inn's luggage check-in is situated on the right side of the Bourgeou Gondola building.

When visiting the mountains, remember to dress warmly, taking note that weather in the mountains can change quickly. Bring both eye and skin protection.

### SUNSHINE GONDOLA STATISTICS

Length: 4.2 km (3 miles)  
 Speed: Approx. 5 metres per second, two times faster than most chairlifts  
 Trip time: Approx. 18 minutes  
 Vertical rise: 490 m (1,635 ft)  
 Number of cars: 200 6-passenger cars  
 Capacity: 1,800 passengers per hour  
 Number of towers: 37

### LIFT TIMES:

Gondola: 7:30 AM - 5:30 PM Monday to Thursday  
 7:30 AM - 10:30 PM Friday and Sunday  
 Saturday - opens 7:30 AM. Phone for closure time

Other Lifts: 8:30 AM - 4:30 PM daily

## THE SUNSHINE SKI SCHOOL

The Ski School desk is located in the Old Sunshine Lodge (log cabin). Whether you're a beginner or a racer, Sunshine's fully certified Ski School will professionally teach and assist you on the slopes. Drop in today for a lesson.

### NEVER EVER SKIERS

Sunshine's Ski School of certified instructors can put you on the right track. We have a special lift, slope and ski program designed just for you. Lessons daily at 11:00 AM and 2:00 PM.

Enquire at the ski rental shop or Ski School desk.

### KID'S KAMPUS

Our instructional programs address the special needs of your children while you are on the slopes.

**Kindercare** (19 months to 6 years old) is hourly daycare.

**Kinderday** (3 to 6 years old) will professionally introduce pre-schoolers to the ski slopes. Half and full day programs. Register at the Kid's Kampus Kindercare Centre located in the Sunshine (upper) Gondola terminal. Turn right as you exit this building.

**Kid's Day** (6 to 12 years) is a full day of adventure on the main slopes, supervised by Sunshine's fully qualified instructors. Half day and full day program. Register at the Ski School desk.

### RECREATIONAL RACING

The Ski Machine offers skiers of all abilities the fun and challenge of head-to-head racing through dual slalom courses. The course is located underneath and parallel to the lower half of the Strawberry Chairlift.

### THE SUNSHINE INN

Enjoy the convenience of skiing to and from your lodging. Be on the slopes bright and early each morning.

Sunshine Inn has been providing ski-week vacations for over 50 years, and packs super value and fun into all-inclusive packages.

Need a room tonight? Drop in now to the Inn's front desk or dial extension 155 from any courtesy phone.

Reservations from home? Write for your free colour brochure: **Sunshine Village Marketing**  
**P.O. Box 1510**  
**Banff, Alberta**  
**Canada TOL 000**  
**Main Number**  
**(403) 762-4000**

