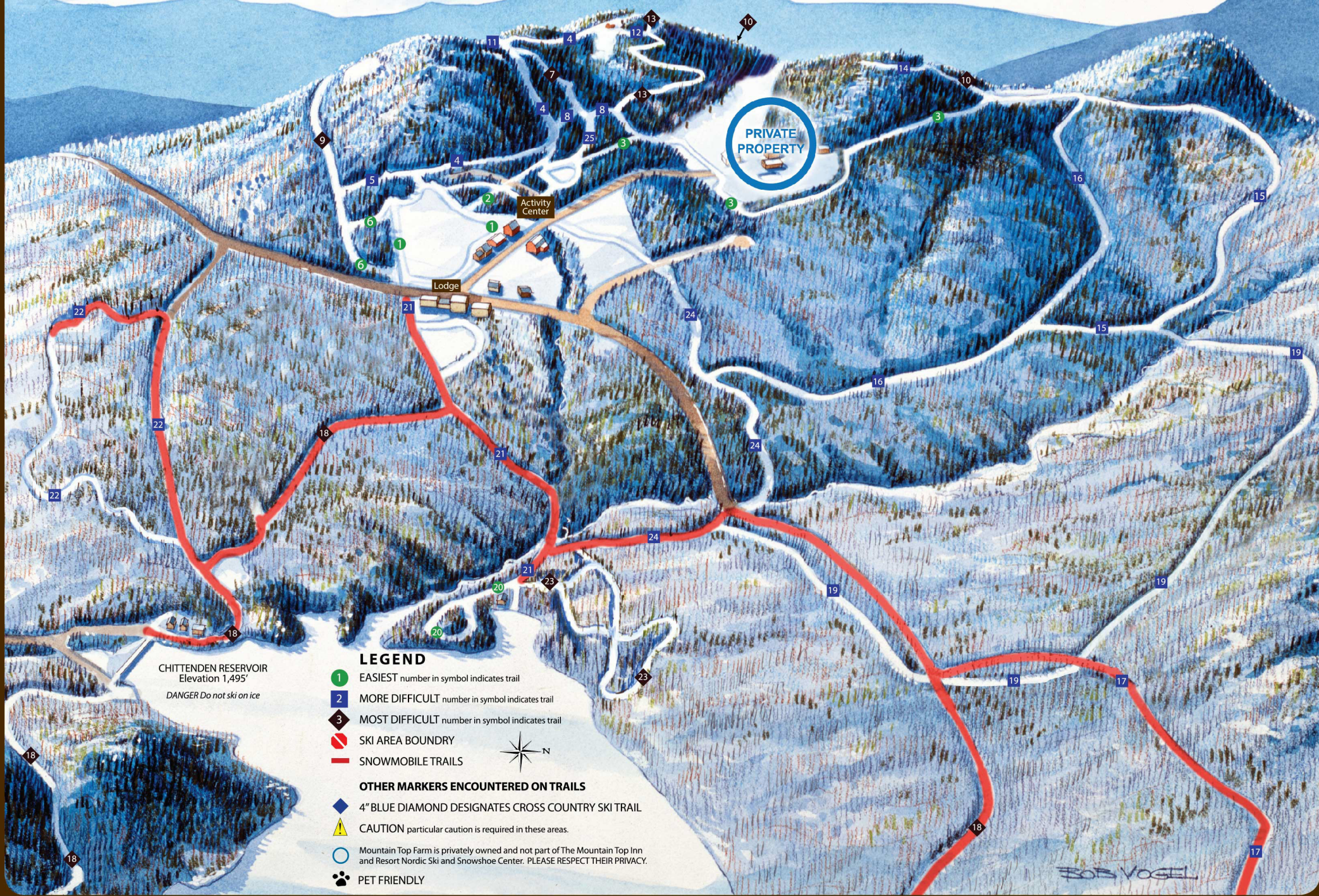


MOUNTAIN TOP RESORT



Persons of any race, color, national origin, sex, age, or religion, or with any handicapping condition are welcome to use and enjoy all the facilities, programs, and services of the U.S. Department of Agriculture. Discrimination in any form is strictly against agency policy and should be reported to the Secretary of Agriculture, Washington, DC 20250



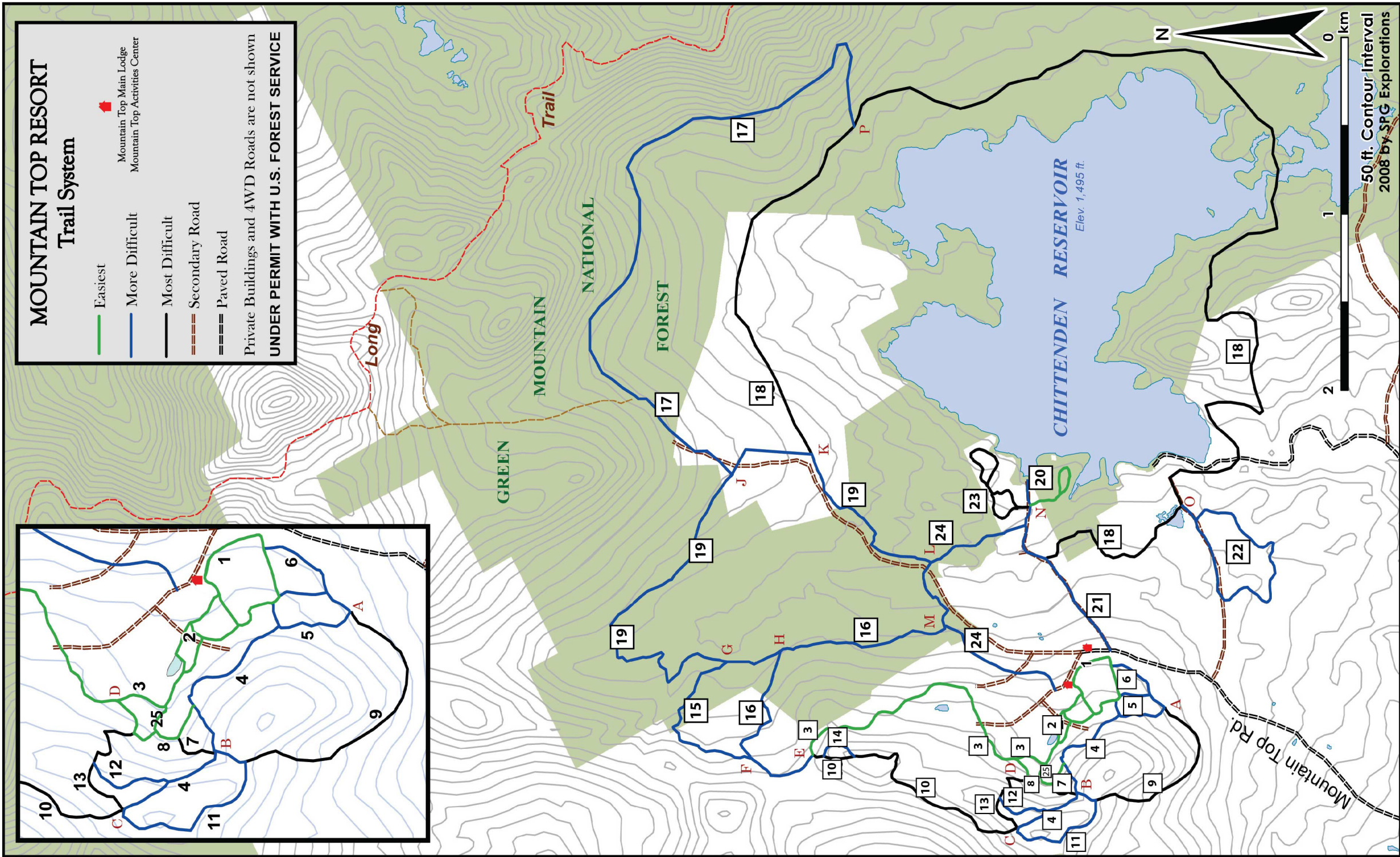
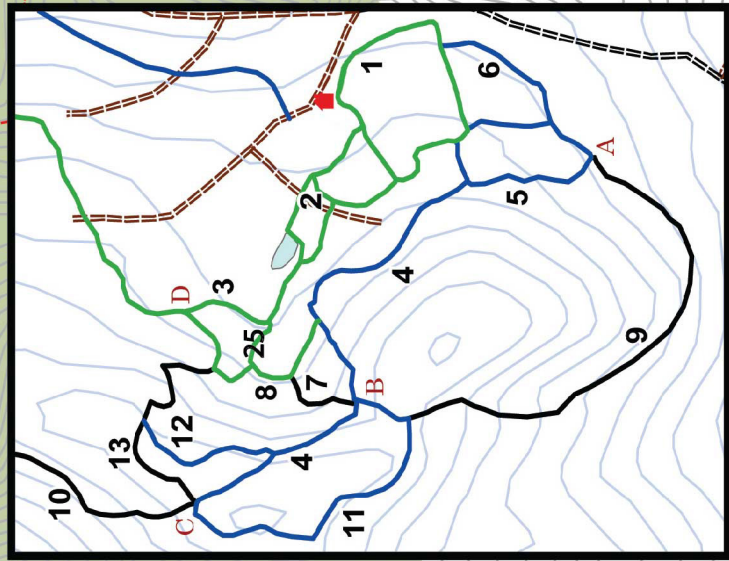
- 1 MORNING GLORY: 1 km
- 2 TURKEY TRACK: 1 km
- 3 INTERFIELD: 2.5 km
- 4 LOGGERHEAD: 2 km
- 5 HERBIE'S RUN: .5 km
- 6 LOOPER: .5 km
- 7 BLACK OUT: .5km
- 8 MOOSE TRACK: 1 km
- 9 CHALLENGER: 1.5 km
- 10 SUNSET: 2 km
- 11 BLUE SIDEWINDER: 1 km
- 12 RYAN'S RUN: .5 km
- 13 NOSE DIVE: 1 km
- 14 ORANGE DIVE: .5 km
- 15 LOST HORIZON: 2 km
- 16 DEER RUN: 2.5 km
- 17 GREEN BROOK TRAIL: 5 km
- 18 ROUND ROBIN: 20 km
- 19 BOONDOCKS: 4 km
- 20 SNOW GOOSE: 1 km
- 21 BOUNDER: 1.5 KM
- 22 BONNIE LASS: 1.5 km
- 23 EIGHT BALL: 1km
- 24 HEWITT BROOK RUN: 2.5 km
- 25 WALT WILK WAY: .25 km

Chittenden, VT | 802.483.2311
www.mountaintoppinn.com

MOUNTAIN TOP RESORT Trail System

- Easiest
- More Difficult
- Most Difficult
- Secondary Road
- Paved Road

Private Buildings and 4WD Roads are not shown
UNDER PERMIT WITH U.S. FOREST SERVICE



Persons of any race, color, national origin, sex, age, or religion, or with any handicapping condition are welcome to use and enjoy all the facilities, programs, and services of the U.S. Department of Agriculture. Discrimination in any form is strictly against agency policy and should be reported to the Secretary of Agriculture, Washington, DC 20250



Chittenden, VT | 802.483.2311
www.mountaintoppinn.com