

FEEL THE POWDER

NISEKO UNITED

A PROUD PARTNER OF IKON PASS MOUNTAIN COLLECTIVE

NISEKO UNITED



BY CAR



BY AIR



BY TRAIN

● New Chitose Airport-Niseko via Route 276 : About 2 hours 10 min
● Sapporo-Niseko via Route 230 : About 2 hours 10 min
● Otaru-Niseko via Route 5 : About 1 hours 30 min
● Otaru Asahi-Niseko via Route 393 : About 1 hours 30 min
● Hakodate-Niseko via Hokkaidou Expressway and Route 5 : About 3 hours
● Haneda Airport-New Chitose Airport About 1 hour 30 min
● Kansai Airport-New Chitose Airport About 2 hour
Sapporo-Kutchan Station via Otaru: About 2 hour
From Kutchan Station by taxi: About 15 minutes
From Kutchan Station by bus: About 20 minutes

HANAZONO NISEKO JAPAN

NISEKO MOUNTAINS Grand HIRAFU

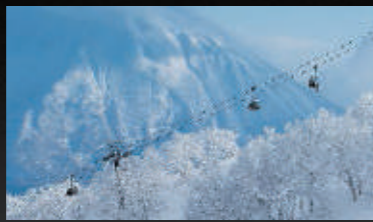
NV Niseko Village Always in Season

Niseko Annupuri

RESORTS

ADVENTURE AWAITS

NISEKO HANAZONO RESORT



■328-36 Aza-Iwaobetsu, Kutchan-cho, Abuta-gun, Hokkaido 044-0082 Japan
■TEL: +81(0)136-23-0103
■December 5, 2020 - April 11, 2021
*Night Skiing is not available at Hanazono
■Business hours: 8:30-17:00

Hanazono is one big powder playground offering something for the whole family. In addition to the dry powder that lasts till afternoon, there is an extensive variety of on-and-off-mountain snow activities based right in the resort, with snowmobiling and cat skiing on their private mountain for both thrill-seekers and chill seekers.

A new world-class resort experience is on the horizon, with the addition of a ski-in-ski-out to Park Hyatt Hotel Residences and the slope-side Restaurant & Bar "Hanazono EDGE".

MAKE YOUR DAY

NISEKO MT.RESORT GRAND HIRAFU

■204 Aza Yamada, Kutchan-cho, Abuta-gun, Hokkaido 044-0081 Japan
■TEL: +81(0)136-22-0109
■December 5, 2020 - May 5, 2021
Night Skiing December 19, 2020 - March 7, 2021
■Business hours: 8:30 -16:30
Night Skiing: 16:30 - 20:00



Hirafu is the beating heart of Niseko - a bustling, old-meets-new, East-meets-West resort village unlike anywhere else in the world. Niseko Grand Hirafu has one main quad lift and a gondola that feed intermediate and advanced skiers two thirds of the way up mountain. From here, traverse to other lifts and head straight down with access to dozens of long, groomed trails and plenty of ungroomed tree runs back to base. Beginners are well catered for with gently sloping family runs at either side of the resort.

NISEKO VILLAGE SKI RESORT IS A SACRED PLACE FOR POWDER THAT OVERLOOKS MOUNT YOTEI

NISEKO VILLAGE SKI RESORT



■Higashiyama-onsen, Niseko-cho, Abutagun, Hokkaido, 048-1592
■TEL: +81(0)136-44-2211
■December. 1, 2020 - April 4, 2021
Night Skiing : December 19, 2020 - March 7, 2021
■Business hours: 8:30 -16:30
Night Skiing: 16:30 -20:00

Mount Niseko Annupuri has a peak elevation of 1,308 metres with pristine wilderness surroundings, offering a plethora of backcountry activities. Niseko Village offers exceptional off piste terrain and a wide range of groomed runs suited to all levels of riders including extreme skiers with mind-blowing volcano crater skiing at the summit. The combination of endless powder, unique riding opportunities and stunning scenery sets Niseko apart as arguably the best ski resort in Japan.

A SPACIOUS SKI RESORT

NISEKO ANNUPURI INTERNATIONAL SKI AREA

■485 Niseko, Niseko Town, Abuta-gun, Hokkaido
■TEL: +81(0)136-58-2080
■November 28, 2020 - May 5, 2021
Night Skiing : December 19, 2020 - March 7, 2021
■Business hours: 8:30 - 16:30
Night Skiing: 16:30 - 20:00



This ski resort is popular with families with its long, gentle slopes. The southern slopes of Niseko Annupuri offer a wide variety of skiing layouts for children and beginners to advanced skiers. There is plenty of powder snow to ski and long cruises with magnificent views. There are a variety of hot spring facilities in the vicinity, making it a pleasure to find your favorite one.

ACCOMMODATIONS

PARK HYATT NISEKO HANAZONO

Set in a spectacular landscape with stunning views across the Annupuri ranges and Mount Yotei, Park Hyatt Niseko Hanazono embodies personal luxury for global connoisseurs.
■328-47 Aza-Iwaobetsu, Kutchan-cho, Abuta-gun, Hokkaido 044-0082 Japan
■TEL: +81(0)136-27-1234
■https://www.hyatt.com/en-US/hotel/japan/park-hyatt-niseko-hanazono/ctsph



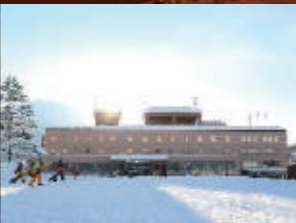
VACATION NISEKO

Vacation Niseko is one of the leading holiday package providers in Niseko. With a range of accommodations, their superb service will ensure your holiday in Niseko is one to remember.
■Midtown Niseko 2F, 91-17 Aza-Yamada, Kutchan-cho, Abuta-gun, Hokkaido, 044-0081 Japan
■TEL: +81(0)136-21-2500
■https://vacationniseko.com



HOTEL NISEKO ALPEN

Blessed with a location of the ultimate access to high-quality powder snow and allow your body to recover and relax with varieties of relaxations. Friendly service with the best smiles will let you relax and unwind.
■204 Aza Yamada, Kutchan-cho, Abuta-gun, Hokkaido 044-0081 Japan
■TEL: +81(0)136-22-1105
■https://www.hotel-nisekoalpen.jp/en/



AYA NISEKO

Situated amidst abundant nature. Fully-furnished rooms and an on-site concierge let you experience wonderful winter season as if it was your own home.
■195-1 Aza Yamada, Kutchan-cho, Abuta-gun, Hokkaido 044-0081 Japan
■TEL: +81(0)136-23-1280
■https://www.ayaniseko.com/



THE GREEN LEAF NISEKO VILLAGE

Inspired by a fusion of world-class design, local artistry of Emi Shiratori and breathtaking scenery, this ski-in ski-out destination provides a spa, onsen and a variety of bar and dining options.
■Higashiyama-onsen, Niseko-cho, Abutagun, Hokkaido, 048-1592
■TEL: +81(0)136-44-3311
■https://www.thegreenleafhotel.com/en/



HILTON NISEKO VILLAGE

Set at the foot of the Niseko Annupuri Mountain, Hilton Niseko Village is the perfect location to enjoy a range of exciting outdoor activities, and we even offer ski-in and ski-out access.
■Higashiyama Onsen, Niseko-cho, Abuta-gun, Hokkaido 048-1592
■TEL: +81(0)136-44-1111
■niseko.hilton.com



NISEKO INTERNATIONAL SNOWSPORTS SCHOOL

They believe in creating a lifelong memory for you where nature's beauty is enhanced by the facilities and your instructor is inspired to teach and pass on their knowledge to you.

■328-36 Aza-Iwaobetsu, Kutchan-cho, Abuta-gun, Hokkaido 044-0082 Japan
■TEL: +81(0)136-21-6688
■https://hanazononiseko.com/en/winter/ski-school



NISEKO SPORTS

Benefit from their top range equipment and conveniently located shops in both Hirafu and Hanazono. The shop staff can advise you on your preferences, level and the snow conditions.
■Four convenient shops located in Hanazono and Hirafu
■TEL: +81(0)136-23-0911
■https://hanazononiseko.com/en/winter/rental-and-retail



NISEKO GRAND HIRAFU SNOW SCHOOL

Offers a full range of programs that will enable everyone, from complete beginners to advanced skiers and snowboarders, to improve their skills while having fun.

■204 Aza Yamada, Kutchan-cho, Abuta-gun, Hokkaido 044-0081 Japan
■TEL: +81(0)136-22-0921
■https://www.grand-hirafu.jp/winter/en/school/



NISEKO GRAND HIRAFU SKI&SNOWBOARD RENTALS

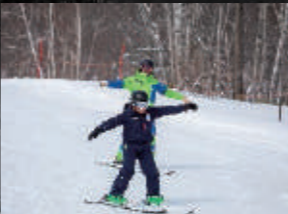
Line-up of items to suit anyone, from children to seniors. Enjoy the world's finest powder snow using the newest gear.
■204 Aza Yamada, Kutchan-cho, Abuta-gun, Hokkaido 044-0081 Japan
■TEL: +81(0)136-23-3755
■https://www.grand-hirafu.jp/winter/en/rental/



NISEKO VILLAGE SNOW SCHOOL (NVSS)

For first-time skiers or those seeking a refresher, Niseko Village Snow School offers ski and snowboard lessons for both adults and kids in private respectively.

■Higashiyama-onsen, Niseko-cho, Abutagun, Hokkaido, 048-1592
■TEL: +81(0)136-44-2281
■https://www.niseko-village.com/en/white/niseko-village-snow-school.html



NISEKO VILLAGE RENTAL

A wide variety of ski and snowboard equipment, ski gear, helmets and other accessories are available at the rental counters in the resort.
■Higashiyama-onsen, Niseko-cho, Abutagun, Hokkaido, 048-1592
■TEL: +81(0)136-44-2211
■https://www.niseko-village.com/en/white/equipment-rental.html



NISEKO AN'NUPURI SKI&SNOWBOARD SCOO

The best way to have fun and improve is to leave it to an expert instructor. Private lessons are a great way to free up more time for you.

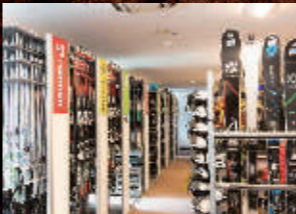
■481 Niseko, Niseko-cho, Abuta-gun, Hokkaido (inside Nook Annupuri Center House)
■TEL: +81(0)136-58-3225
■https://website-home.wixsite.com/nass-eng



SPORTS RENT CIAO

Sport Rent Ciao rentals are equipped with the latest gear. Enjoy Niseko's snow conditions at its best!

■481 Niseko, Niseko-cho, Abuta-gun, Hokkaido (inside Nook Annupuri Center House)
■TEL: +81(0)136-55-6335
■https://www.skirental.jp



RESTAURANTS

RESTAURANT & CAFE HANAZONO EDGE

Hanazono's slope side restaurant & bar - Hanazono EDGE offering an elevated dining experience on the mountain.

■328-36 Aza-Iwaobetsu, Kutchan-cho, Abuta-gun, Hokkaido 044-0082 Japan
■TEL: +81(0)136-21-6655
■https://hanazononiseko.com/en/winter/resort/restaurants



DINING AT PARK HYATT NISEKO HANAZONO

Indulge in extraordinary culinary experiences featuring an exquisite selection of creative cuisines focusing on the freshest locally selected ingredients and authentic craftsmanship.

■328-47 Aza-Iwaobetsu, Kutchan-cho, Abuta-gun, Hokkaido 044-0082 Japan
■TEL: +81(0)136-27-1234
■https://www.hyatt.com/en-US/hotel/japan/park-hyatt-niseko-hanazono/ctsph/dining



RESTAURANT SLALOM

Slalom offers a breakfast buffet with abundant selection of dishes, and dinners feature seasonal favors. Enjoy a relaxed atmosphere.

■204 Aza Yamada, Kutchan-cho, Abuta-gun, Hokkaido 044-0081 Japan
■TEL: +81(0)136-22-1105
■https://www.hotel-nisekoalpen.jp/en/restaurant/



KING-BELL HUT

Enjoy lunch with relaxing viess of Mt.Yotei, or gaze at the ski slopes while taking a short break at the café.

■204 Aza Yamada, Kutchan-cho, Abuta-gun, Hokkaido 044-0081 Japan
■TEL: +81(0)136-23-3755
■https://www.grand-hirafu.jp/winter/en/restaurant/



THE VILLAGE

Niseko Village's main pulse is where traditional and contemporary concepts meld to offer world-class restaurants and bars, designer boutiques, art and cultural events. Conveniently located, the village allows for seamless ski-in, ski-out access between mountain adventures and indoor diversions, day and night. Yang shu ten Fresh Hokkaido produce and the ocean's bounty are turned into sushi, tempura and teppanyaki dishes including delightful local dairy desserts village sports Niseko Village's premier sports store for all seasons. Offering a great range of clothing, premium rentals, ski and snowboard sales, ski fashion and accessories, custom bootfitting and workshop services throughout the winter.Niseko Village Marche, where you will find locally produced wines, confectionery and artisanal products so you can tick souvenir shopping off your list.

■Higashiyama-onsen, Niseko-cho, Abutagun, Hokkaido, 048-1592
■https://www.niseko-village.com/en/thevillage/index.html



RESTAURANT NEW SANKO

We offer more than 30 dishes made with carefully selected ingredients with a little extra effort. Please enjoy a wide variety of dishes that cannot be found at other ski resorts.

■481 Niseko, Niseko-cho, Abuta-gun, Hokkaido (inside Nook Annupuri Center House)
■TEL: +81(0)136-58-2021
■https://www.newsanko.jp/shop_niseko/index.html



ECLAT FUSION RESTAURANT

Discover a reasonably priced lunch buffet filled with favorites handcrafted by the chefs. Enjoy an extravagant lunch time.

■480-1 Aza Niseko, Niseko cho, Abuta gun, Hokkaido
■TEL: +81(0)136-58-3311
■https://niseko-northern.com/en/



LIFT TICKETS

REGULAR SEASON	DECEMBER 11, 2020 - MARCH 21, 2021			
TYPE	ADULT	AGE 7-12	AGE 13-15	SENIOR AGE OVER 60
USE DAYS (EFFECTIVE DAYS)				
1-DAY	¥8,100	¥4,900	¥6,500	¥6,500
2-DAY	¥14,800	¥9,000	¥11,900	¥11,900
3-DAY	¥21,500	¥13,000	¥17,200	¥17,200
4-DAY	¥28,200	¥17,000	¥22,600	¥22,600
5-DAY	¥34,900	¥21,000	¥27,900	¥27,900
6-DAY	¥41,600	¥25,000	¥33,300	¥33,300
7-DAY	¥48,300	¥29,000	¥38,700	¥38,700
8-DAY (10-DAY)	¥55,000	¥33,000	¥44,100	¥44,100
9-DAY (11-DAY)	¥61,700	¥37,000	¥49,400	¥49,400
10-DAY (12-DAY)	¥68,400	¥41,000	¥54,800	¥54,800
11-DAY (13-DAY)	¥75,100	¥45,000	¥60,100	¥60,100
12-DAY (14-DAY)	¥81,800	¥49,000	¥65,500	¥65,500
13-DAY (15-DAY)	¥88,500	¥53,000	¥70,900	¥70,900
14-DAY (16-DAY)	¥95,200	¥57,000	¥76,200	¥76,200
15-DAY (18-DAY)	¥101,900	¥61,000	¥81,600	¥81,600
16-DAY (19-DAY)	¥108,600	¥65,000	¥86,900	¥86,900
17-DAY (20-DAY)	¥115,300	¥69,000	¥92,300	¥92,300
18-DAY (21-DAY)	¥122,000	¥73,000	¥97,700	¥97,700
12-POINT	¥4,900	¥3,600	¥4,300	¥4,300

EARLY SEASON	NOVEMBER 28, 2020 - DECEMBER 10, 2020			
SPRING SEASON	MARCH 22, 2021 - APRIL 4, 2021			
TYPE	ADULT	AGE 7-12	AGE 13-15	SENIOR AGE OVER 60
USE DAYS (EFFECTIVE DAYS)				
1-DAY	¥5,700	¥3,500	¥4,600	¥4,600
2-DAY	¥10,400	¥6,300	¥8,400	¥8,400
3-DAY	¥15,100	¥9,100	¥12,100	¥12,100
4-DAY	¥19,800	¥12,000	¥15,900	¥15,900
5-DAY	¥24,500	¥14,800	¥19,700	¥19,700
6-DAY	¥29,200	¥17,600	¥23,400	¥23,400
7-DAY	¥33,800	¥20,400	¥27,100	¥27,100
12-POINT	¥4,900	¥3,600	¥4,300	¥4,300

FINAL SEASON	APRIL 5, 2021 - MAY 5, 2021			
TYPE	ADULT	AGE 7-12	AGE 13-15	SENIOR AGE OVER 60
USE DAYS (EFFECTIVE DAYS)				
1-DAY	¥4,100	¥3,500	¥4,100	¥4,100

*Hours and days of operation are subject to change according to snow and weather conditions.
*The seniors' rate applies to guests age 60 and over.
*Proof (student card, driver's license) is required for age 13 - 15 and seniors' discounts.
*Preschoolers are free of charge. Preschoolers must either be accompanied by a guardian or proof of age identification
*Lift rates are subject to change.

ONLINE LIFT PASS BEAT THE QUEUES - BUY ONLINE & SAVE

Online lift pass ensure you the fastest access to the lift gates. Buy your pass online, collect your keycard from a ticket machine at any of the four Niseko United resorts and you are all set for the slopes! If you already have a keycard, re-charge it online and head straight to the lift gates.

TAKE ADVANTAGE OF OUR ONLINE DISCOUNTS

All Mountain 1 Day Pass
¥8,100 → ¥7,500 (about 7% off)

VISIT OUR WEBSITE AND SHOP NOW



niseko.ne.jp

NISEKO UNITED

COVID-19 PREVENTIVE MEASURES AT NISEKO UNITED

To protect our guests and employees from COVID-19 infections, Niseko United is implementing the following preventive measures and improving hygiene practices under the guidance of Japanese and local governments and health authorities.



For the health and safety of our customers and staff, we ask for your understanding and cooperation.
For more information, please check the NISEKO UNITED website.
<https://www.niseko.ne.jp/en/covid-19-update/>

CONNECTING ALL MOUNTAIN RESORT EVERYDAY!

NISEKO UNITED SHUTTLE BUS

IN-RESORT BUS SERVICE

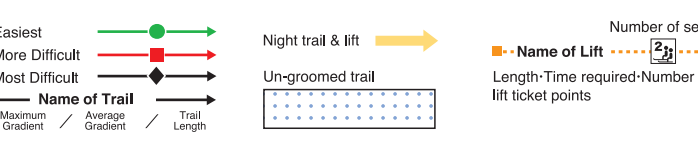
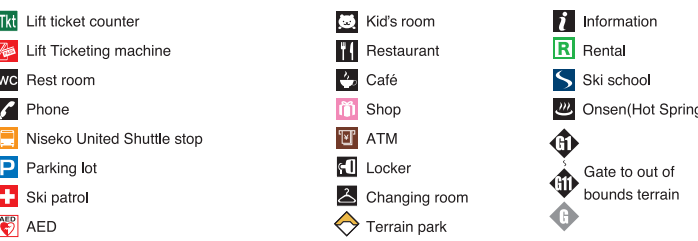
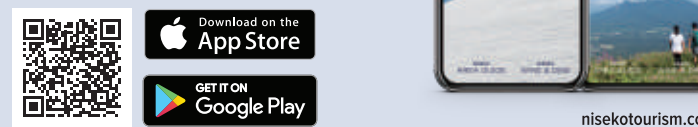
Scan QR code for shuttle bus timetable

INQUIRIES TEL : +81(0)136 44 2001 (NISEKO BUS)

Download the official Niseko App today!

Access useful resort info right in the palm of your hand including:

- Niseko United shuttle timetable and real-time bus location tracking
- Interactive Niseko United Trail Map with live ski lift status and snow conditions
- and more!



NISEKO UNITED

ONE MOUNTAIN FOUR RESORTS



CHECK THE LATEST NEWS & LIFT STATUS ON THE NISEKO UNITED WEBSITE



Scan QR code or go to [niseko.ne.jp](https://www.niseko.ne.jp)

FOR YOUR SAFETY

Regardless of how you enjoy your snow sports, always show courtesy to others and be aware that THERE ARE INHERENT RISKS in all snow recreation activities. These risks include rapid changes in weather and surface conditions, collisions with other people as well as natural and artificial hazards such as rocks, trees, stumps, bare spots, lift towers and snowmaking equipment. Common sense and personal awareness can reduce such risks. Observe the ALPINE RESPONSIBILITY CODE and share with others the responsibility for a great experience.

ALPINE RESPONSIBILITY CODE

1. Know your ability and always stay in control.
2. Take lessons from qualified professional instructors to learn and progress.
3. As you proceed downhill or overtake another person, you must avoid people below and beside you.
4. Do not stop where you could obstruct a trail, a run or are not visible from above.
5. When entering a trail, a run or starting downhill, look uphill and give way to others.
6. Always use chairlift restraining devices where provided and always use proper devices to prevent runaway equipment. Ensure equipment is in good condition.
7. Observe and obey all signs and warnings. Keep off closed trails or runs and keep out of closed areas.
8. Before using any lift, you must have the knowledge and ability of how to load and unload safely.
9. Do not ski, snowboard, ride a lift or undertake any other alpine activity if your ability is impaired by drugs or alcohol.
10. If you are involved in, or witness an accident, alert the Ski Patrol, remain at the scene and identify yourself to them.

UNDERSTAND YOUR RESPONSIBILITIES ON THE MOUNTAIN

NISEKO RULES(2019-2020)

[Crossing Boundary Ropes is Prohibited]

Publishing : Niseko Annupuri Avalanche Prevention Committee

1. Always use gates to go out of the resort boundaries.
2. Do not duck boundary ropes.
3. Wearing a helmet and an avalanche beacon is highly recommended in the bounds area. This rule will be mandated in the 2020-2021 season.
4. Skiing/Snowboarding out of bounds is prohibited when gates are closed.
5. Never enter strictly off-limits areas at any time (except for official rescue and research operations).
6. Elementary school children are not allowed in the out of bounds area unless accompanied by an elder companion.

*For the latest information, please check our website or the Niseko Rules displayed at each resort.

MIZUNO NO SAWA AVALANCHE CONTROL OPERATION AREA

Mizuno no sawa is a specially controlled area where various methods of avalanche control are employed in the interest of safety.

Contact: Niseko Village +81-(0)136-44-2211

To protect the safety, quality and integrity of the snowsports schools and guiding services in Niseko, please only engage services of authorised providers.



To ensure safety, those who wish to employ a back country ski guide are advised to employ a member of the Niseko Winter Guide Association, [nisekoguide.jp](https://www.nisekoguide.jp)