

# SNOWSHOE TRAILS

# FAT BIKING

## SNOWSHOE LEGEND

- OLD CABIN LOOP - 2.5km
- LOOK OUT - 500m
- TREE BEARD'S TRAIL - 1.5k
- SNOW PAWS - 1.5km
- CROOKED CREEK - 2km
- FINGER GLADES - 4km
- GREAT BIG VIEW - 3km
- ROSSITER'S ROUTE - 3km



FIRST AID



PERMANENTLY CLOSED AREA



PARKING

## SNOWSHOE RESPONSIBILITY CODE

THERE ARE ELEMENTS OF RISK THAT COMMON SENSE AND PERSONAL AWARENESS CAN HELP REDUCE. REGARDLESS OF HOW YOU DECIDE TO USE THE TRAILS, ALWAYS SHOW COURTESY TO OTHERS. PLEASE ADHERE TO THE CODE LISTED BELOW AND SHARE WITH OTHERS THE RESPONSIBILITY FOR A SAFE OUTDOOR EXPERIENCE.

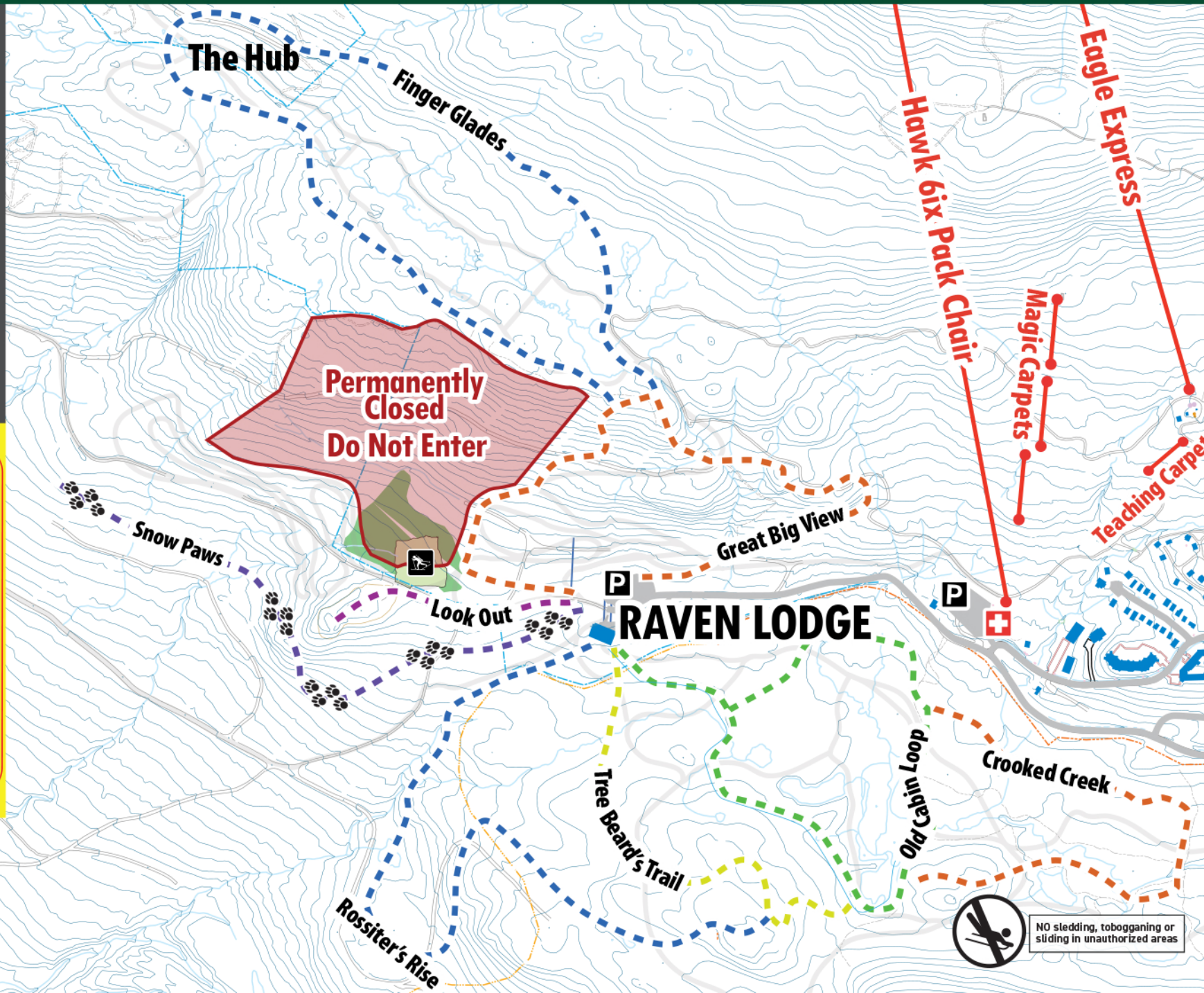
- |  |   |
|--|---|
| 1 Always check posted trail conditions.  | 5 Do not remove or move trail markers.                            |
| 2 Please obey all posted signs, stay off closed areas.   | 6 Check both ways before crossing ski trail.                      |
| 3 Please DO NOT tread on the classic tracks or in the middle of the skate lane. Snowshoe on the outside of ski trails. | 7 Do not litter. Take out what you pack in. Respect all property. |
| 4 Display trail pass for marked trails.  | 8 Report all accidents.   |

**Know the code - Be Safety Conscious  
It is your Responsibility**



IN CASE OF  
EMERGENCY  
CALL FIRST AID

**250-334-5741**



**Fat Biking** NEW for 2018.19 the addition of fat biking to the Nordic Centre located at Raven lodge. Enjoy parts of our Nordic trail system on a fat tire mountain bike. Approximately 15 km of beautiful and scenic cross-country trails.



**MT. WASHINGTON**  
ALPINE RESORT

## OUR CORPORATE SPONSORS



## NORDIC TRAIL MAP



**MT. WASHINGTON**  
ALPINE RESORT

