



BOREAL and The New Accelerator High Speed Quad Chairlift

Boreal Trail Guide

Boreal's extensive chairlift system accesses top to bottom skiing and terrain for every level of skier from the first timer to the seasoned pro.

● Easiest

1. Primrose
2. Lower Mariposa
3. Upper Cut
4. Lower Cut
5. Lower Sierra
6. Kiss A Bear
7. South 40
8. Lower Prospector
9. Lower Klondike
11. Sunset Boulevard
12. Westward Ho

■ More Difficult

13. Tamarack
14. Mariposa
15. His
16. Sierra
17. Prospector
18. Stagecoach
19. Ptarmigan
20. West Bowl
21. D. & R. G.
22. Central Pacific

◆ Most Difficult

23. Ponderosa
24. Juniper
25. Hers
26. Yours
27. Race Course
28. Bonanza
29. Klondike
30. Road Island
31. East Face
32. West Face
33. Ptarmigan Gulch
34. Chukker
35. Mogul Rock
36. Waterfall



Since opening in 1965, Boreal has made a commitment to providing quality skiing and service at every level of our operation. Today this genuine pledge is more than a promise, it's a guarantee!

The Satisfaction Guarantee begins with snow conditions. Boreal's reputation for superior mountain maintenance, grooming and snowmaking speaks for itself. We're confident you'll love the skiing and guarantee it! If you're not satisfied, return your lift ticket within 1/2 hour of purchase for a full cash refund.

Our commitment to quality service extends beyond ski conditions. Boreal's Satisfaction Guarantee encompasses our entire operation including Ski School, Animal Crackers, Food Service and Express Rentals. If for any reason you are not satisfied with the quality of the service or product, please bring it to our attention.

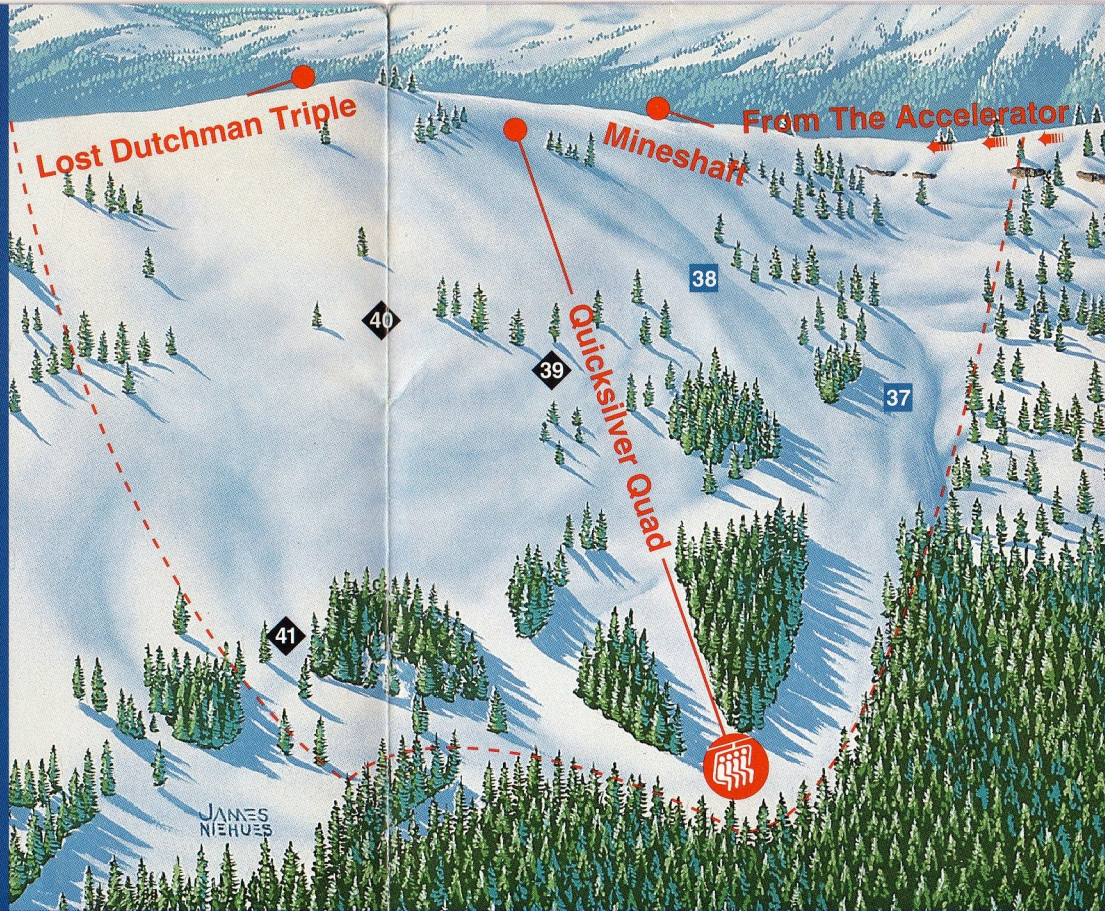
At Boreal, we aim to make your visit an exciting and enjoyable experience. Our Satisfaction Guarantee goes the extra mile to make this possible. Thank you for skiing with us.

Skier's Responsibility Code

There are elements of risk in skiing that common sense and personal awareness can reduce.

1. Ski under control and in such a manner you can stop or avoid other skiers or objects.
2. When skiing downhill or overtaking another skier, you must avoid the skier below you.
3. You must not stop where you obstruct a trail or are not visible to other skiers.
4. When entering a trail or starting downhill, yield to other skiers.
5. All skiers shall use devices to prevent runaway skis.
6. You shall keep off closed trails and observe all posted signs.

THIS IS A PARTIAL LIST. BE SAFETY CONSCIOUS.



Quicksilver Quad Chairlift

Quicksilver Trail Guide

Boreal's Quicksilver Quad accesses five south-facing runs and bowls for intermediate and advanced level skiing. Snowmaking covers portions of the Quicksilver area to assure skiing when mother nature falls short. The Quicksilver Quad is accessible from The Accelerator, Mineshaft and Lost Dutchman chairlifts.

■ More Difficult

- 37. Trough
- 38. Timber Wagon

◆ Most Difficult

- 39. Sadie
- 40. Rock Crusher
- 41. Air Shaft

SLOW SKIING

● EASIEST

TOP TO BOTTOM NOVICE RUN

■ MORE DIFFICULT

◆ MOST DIFFICULT

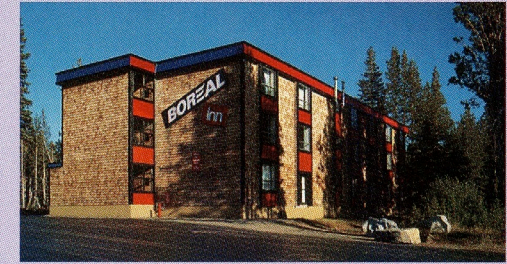
- - - - SKI AREA BOUNDARY

Colors and symbols indicate average degree of slope difficulty relative to Boreal Ski Area. Snow, weather conditions and time of day can influence the given ratings significantly. Be aware of changing conditions. Natural and man-made obstacles exist above and below the snow. Use caution and always ski in control.

SPECIAL DATES

December 13	The Accelerator Celebration
December 31	New Year's Eve Extravaganza
January 23 & 24	California Snowboard Series
February 6 & 7	McKinney Speed Challenge
February 27 & 28	Amateur Snowboard Competition
March 12	Free Snowfest Race
March 13 & 14	McKinney Speed Challenge
March 13 & 14	Far West Ski Association Race
April 3 & 4	USSA Speed Skiing
April 11	Easter Brunch and Easter Egg Hunt

THE BOREAL INN



BED & BREAKFAST

The 36 room Inn is located just steps from the slopes of Boreal. Each room is attractively decorated and includes two queen-sized beds, a private bath, color cable TV and telephone. A breakfast coupon is provided for each night's stay.

Single Night Rates Per Room

(Tax not included)

	Sunday - Thursday	Friday/Saturday/Holiday
1 Person	\$60	\$70
2 Persons	\$65	\$75
3 Persons	\$70	\$80
4 Persons	\$75	\$85

Two nights minimum on weekends and holidays.

Midweek Stay and Ski Packages

Economically-priced packages include lodging, lift tickets and meals. All rates are Sunday through Thursday excluding holidays (November 26 through December 1, December 21 through January 7, January 17, February 14). All rates include room tax. Children 12 and under stay free.

	One Person	Two Persons	Three Persons	Four Persons
3 days/2 nights	\$143	\$226	\$308	\$391
4 days/3 nights	\$201	\$311	\$422	\$532
5 days/4 nights	\$260	\$399	\$538	\$677
6 days/5 nights	\$318	\$485	\$652	\$818

All rates and programs listed in the brochure are subject to change.



FAMILY SAVINGS BOOK - SAVE \$101

The best value for skiing families is at Boreal. Purchase a Family Savings Book worth \$200 for just \$99. That's comparable to receiving \$101 in free ski benefits! Each book contains twenty \$10 credit coupons. Fifteen coupons may be

used on purchases of lift tickets or equipment rentals. Five are valid on group ski lessons or Animal Crackers. Family coupons may be used any day all season. Coupons are non-transferable and only one coupon may be used per ticket, rental or lesson purchase.

THE GROUP SPECIALIST

Boreal makes it easy for ski trip organizers with express ticketing and rentals, experienced in-house coordinators, and competitive group rates.

SKI UNTIL 9PM*

Boreal's longer hours of operation extend your ski day and lift ticket value. Catch a few extra runs in the late afternoon or ski under the stars until 9 pm. Boreal operates up to three chairlifts including the new Accelerator Quad. Any lift ticket purchased at Boreal is valid until closing.

* Night skiing begins Thanksgiving. No night skiing Christmas Eve.

EXPRESS RENTALS

Save time and effort by renting ski equipment at Boreal. With the modern Express boot and binding system, you're out on the slopes faster and with less hassles than renting elsewhere. Also available are performance demo skis and boots and the latest snowboarding equipment.

	Adult	Child (12 & under)
Skis, Boots and Poles		
All day	\$18	\$14
Half Day (1 pm to 9 pm)	\$15	\$12
Snowboard		
All Day	\$25	\$25
Half Day (1 pm to 9 pm)	\$17	\$17



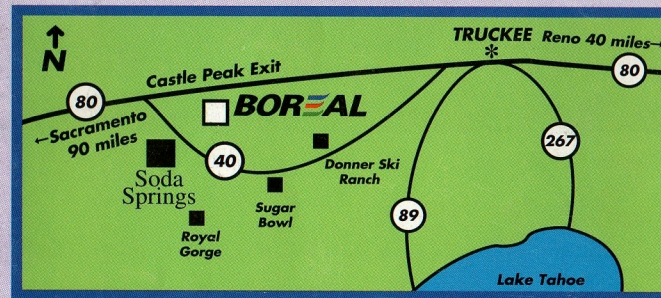
Photo by Eric Von Seggem

SNOWBOARDING

Snowboard skiers are welcome at Boreal and will find a host of special activities and amenities including lesson packages, performance rentals, competitions and two halfpipes.

CONVENIENT AND CLOSE

Replace driving time with skiing time. Boreal is the closest resort from Sacramento and the Bay Area. We guarantee the quickest and easiest access off Interstate 80.



Boreal is on Interstate 80 (Donner Summit) at the Castle Peak exit; 175 miles east of San Francisco, 90 miles east of Sacramento, 45 miles west of Reno.

FOR MORE INFORMATION, CALL OR WRITE:

Boreal/Soda Springs Ski Areas
P.O. Box 39, Truckee, CA 96160
916-426-3666

24-HOUR SNOW & WEATHER CONDITIONS: 916-426-3666

CALTRANS HIGHWAY INFORMATION:

San Francisco - 415-557-3755
Sacramento - 916-653-7623
Reno - 702-793-1313

NEW LIFTS
NEW RUNS
NEW BOREAL

BOREAL

1992-1993
SKI AREA
GUIDE



Under 3 minutes to the top!