

MOUNTAIN FACTS

SKIABLE TERRAIN: 2,000+ skiable acres (810+ hectares)
LONGEST RUN: 4.6 miles (7.4 km), Galloping Goose
TOTAL TRAILS: 148
TRAIL DIFFICULTY: 23% Beginner, 36% Intermediate, 41% Advanced/Expert
TOTAL LIFTS: 19 Total: 2 High-Speed Gondolas, 7 High-Speed Quads, 1 Fixed Quad, 2 Triples, 2 Doubles, 3 Magic Carpets, 2 Surface Lifts
VERTICAL DROP: 4,425 feet (1,349 m)
LIFT-SERVED VERTICAL DROP: 3,790 feet (1,155 m)
LIFT CAPACITY: 22,386+ skiers per hour
AVERAGE ANNUAL SNOWFALL: 280 inches (711 cm)
All information is subject to change. All slopes, trails and lifts are closed to the public outside of operating hours, and are opened and closed at the discretion of Telluride Ski Resort.

BE SAFE AND HAVE FUN

Know the Code — It's Your Responsibility

1. Always stay in control. Be able to stop or avoid other people or objects.

2. People ahead of you have the right of way. It is your responsibility to avoid them. Moderate your speed according to space.

3. You must not stop where you obstruct a trail or are not visible from above.

4. When starting downhill or merging onto another trail, look uphill and yield.

5. Use devices to prevent runaway equipment.

6. Observe all posted signs and warnings. Keep off closed trails and out of closed areas.

7. Prior to using any lift you must have the knowledge, skills and abilities to safely load, ride and unload.

BE ADVISED THAT A GREEN CIRCLE, BLUE SQUARE OR BLACK DIAMOND TRAIL AT YOUR AREA IS NOT NECESSARILY THE SAME AS A SIMILARLY RATED TRAIL AT TELLURIDE. THE SYSTEM IS A RELATIVE SYSTEM. YOU SHOULD WORK YOUR WAY UP, BEGINNING WITH THE EASIEST TRAILS NO MATTER WHAT YOUR ABILITY LEVEL MAY BE, UNTIL YOU ARE FAMILIAR WITH THE TRAILS HERE AT TELLURIDE SKI RESORT.

Colorado Ski Safety Act
The Colorado legislature, recognizing risks that are inherent in the sport, has passed the Colorado Ski Safety Act which provides inherent risks of the sport and relative responsibilities of the “skier” and the ski area. You must obey the Act. Under the Act, any person using the facilities of a ski area is considered a skier. A summary of the inherent risks is listed below:
WARNING Under Colorado law, a skier assumes the risk of any injury to person or property resulting from any of the inherent dangers and risks of skiing and may not recover from any ski area operator for any injury resulting from any of the inherent dangers and risks of skiing, including: changing weather conditions; bare spots; rocks; stumps; trees; collisions with natural objects, man-made objects, or other skiers; variations in terrain; failure of skiers to ski within their own abilities; as well as cliffs, extreme terrain, jumps and freestyle terrain.

Extreme Terrain contains cliffs, very steep slopes as well as rocks and other hazards. Skiing or boarding Extreme Terrain is for EXPERTS ONLY.

Freestyle Terrain Areas are designated with an orange oval and may contain jumps, hits, ramps, banks, fun boxes, jibs, rails, half pipes, quarter pipes, snowcross, bump terrain and other constructed or natural terrain features. Prior to using Freestyle Terrain, you are responsible for familiarizing yourself with Freestyle Terrain and obeying all instructions, warnings and signs. Freestyle skills require maintaining control on the ground and in the air. Use of Freestyle Terrain exposes you to the risk of serious injury or death. Inverted aerials are not recommended. You assume the risk.

Ski Area Boundary/Backcountry Warning
WARNING. FOR YOUR PROTECTION. Pursuant to the Colorado Ski Safety Act, Telluride Ski Resort assumes no responsibility for the safety and welfare of skiers/snowboarders going beyond the ski area boundary. Areas beyond the ski area boundary are not patrolled or maintained. Avalanche danger and other hazards exist. You are solely responsible for your safety and welfare. Rescue in the backcountry, if available, will be costly and may take time.

Individuals may only access USFS land from designated backcountry access points through gates that are located and managed at the discretion of the USFS. Location of the access gates may change at any time. Once a skier exits the ski area boundary, the ski area and its ski patrol have no duty to provide care and rescue services to any skier, snowboarder or hiker. Persons using the backcountry access gates assume any and all risks and dangers associated with backcountry access, including serious bodily injury and/or death. Violation of boundary policy will result in loss of skiing privileges and removal from the ski resort.

Lift Safety. Be advised, a person cannot board a lift unless they have sufficient physical dexterity, ability and knowledge to use such lift safely, or until that person has asked for and received sufficient information to use the lift safely. No person may use a lift or any ski trail when under the influence of drugs or alcohol.

Slow Zones. Certain areas (indicated in yellow on the map) are designated as SLOW ZONES. Observe all posted slow areas by maintaining a speed no faster than the flow of surrounding traffic. Fast and aggressive skiing will not be tolerated and may result in removal from the ski resort.

Uphill In-season Access: Uphill access is only permitted on ski trails in the Lift 10 “Sunshine” pod, with the exception of Sundance Ski Trail, during hours from 8:00am–4:00pm. Authorized uphill activities include Nordic skiing, snowshoeing, uphill skinning, trail walking and running. Fat tire biking, uphill skinning, snowshoeing, trail walking, running and Nordic skiing are permitted in the same area after the ski operations at 4:30pm until 10:00pm. Users do so at their own risk. Uphill access on the rest of Telluride Ski Resort is prohibited.

Drones Prohibited.
Unmanned aerial drone use by guests or the media is prohibited without prior written approval of Telluride Ski Resort.

FOR MORE INFORMATION: [TellurideSkiResort.com/Safety](https://www.tellurideskiresort.com/safety)

Thank You for Keeping Telluride Safe!

You are responsible for avoiding skiers and riders in front of you. Be aware and stay safe! If you're involved in a collision, remain on the scene and provide your contact information to an employee of the ski area.

NUMBERS TO KNOW	
General Information	800.788.8581
Ski & Snowboard School.....	970.728.7414
Ticket Office	970.728.7517
Guest Services	970.728.7575
Ski Patrol	970.728.7585
Adaptive Ski Program	970.728.5010
Public Safety	970.728.7569

MAP KEY	
	Warming Hut
	Pedestrian Crossing
	Nordic
	Ski & Snowboard Rental Shops
	Ski & Snowboard School Meeting Place
	Complimentary Mountain Tours (10am)
	Backcountry Access Point
	Lost & Found
	Child Care/Nursery
	Snowshoe
	Picnic Area

LIFT INFORMATION	
LIFT # / Approximate Ride Time / Vertical Rise	
1	CHONDOLA, 4 mins, 385 ft
2	COMP HILL, 4 mins, 355 ft
4	VILLAGE EXPRESS, 6 mins, 1,245 ft
5	POLAR QUEEN EXPRESS, 5 mins, 935 ft
6	APEX, 6 mins, 1,145 ft
7	LIFT 7, 10 mins, 1,845 ft
8	OAK STREET, 5.5 mins, 1,055 ft
9	PLUNGE, 12.5 mins, 2,125 ft
10	SUNSHINE EXPRESS, 10.5 mins, 1,735 ft
11	UTE PARK EXPRESS, 4 mins, 275 ft
12	PROSPECT EXPRESS, 5 mins, 1,050 ft
13	LYNX, 2 mins, 30 ft
14	GOLD HILL EXPRESS, 4 mins, 1,475 ft
15	REVELATION, 4 mins, 783 ft
CARPETS, 2 mins, 10–30 ft	
GONDOLA*, 7.5 mins, 1,790 ft TELLURIDE STATION TO SAN SOPHIA STATION	
GONDOLA*, 5 mins, 1,000 ft SAN SOPHIA STATION TO MTN. VILLAGE STATION	
GONDOLA*, 3.5 mins, --- MTN. VILLAGE STATION TO MARKET PLAZA	
*A lift ticket is required to ski and snowboard on Telluride Ski Resort via the Gondola. Gondola transportation between the town of Telluride, Mountain Village and Market Plaza is free.	

SKI AREA OPERATING HOURS*	
Lifts 1 (Chondola), 4, 7 & 10.....	9:00am–4:00pm
Lifts 5, 6 & 9.....	9:00am–3:30pm
Lift 8	9:00am–1:30pm
Lifts 11, 12, 13, 14 & 16	9:15am–3:15pm
Gondola.....	9:00am–4:00pm

*Schedules subject to change, including possible one-hour shift forward for lift opening and closing times for Daylight Saving Time.

PUBLIC TRANSPORTATION HOURS (Gondola & Chondola)	
Daily	6:30am–12 midnight

For more information visit [TownOfMountainVillage.com/Gondola](https://www.townofmountainvillage.com/gondola)



TellurideSkiResort.com
800.778.8581

A SPECIAL THANKS TO OUR RESORT PARTNERS



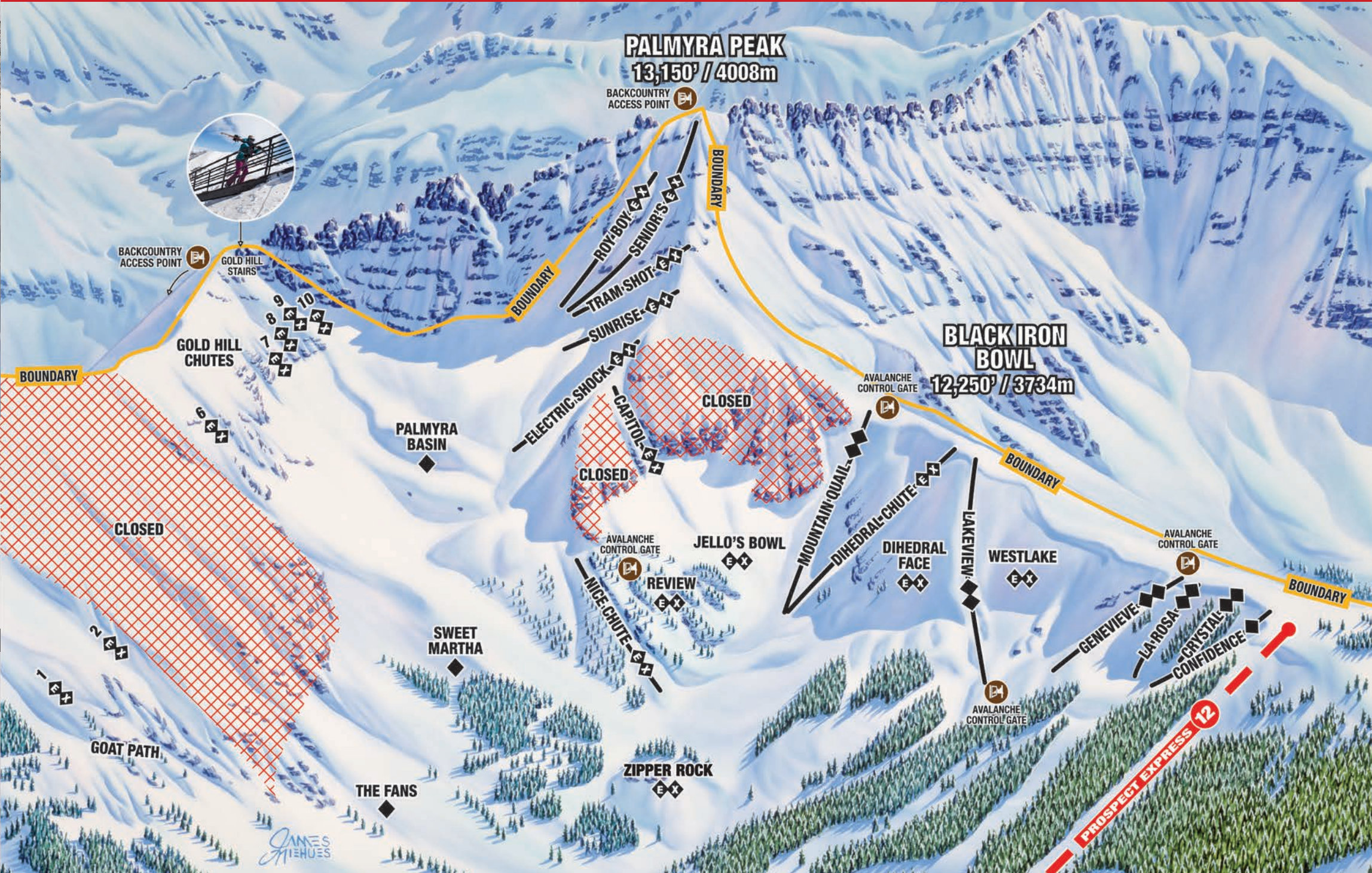
©2021/2022, Telluride Ski & Golf, LLC. All rights reserved. Characters, photos and logos are exclusive to Telluride Ski & Golf.

LOPESIDE SKI VALET AND LOCKERS
Two convenient locations for overnight or seasonal boot and ski storage. Call us to reserve your space! 970.728.2719
Further information, we are happy to help! 970.728.7575
for a tour or around Mountain Village for a friendly face to answer our Guest Services Hosts, with their Gold Jackets on the mountain Get to know the resort by joining us on a free mountain tour. Look for

GUEST SERVICES | LOST & FOUND



PALMYRA PEAK & BLACK IRON BOWL



SKI & SNOWBOARD SCHOOL



Unlock Your Vacation's Potential – A private lesson with a pro is the best way to improve your skills on the mountain. Accomplish what you want at the time you want. Reservations 970.728.7414 or lessons@telski.com.



Children's Adventures – Our Children's Center creates a safe, fun and educational environment for your kids. Skiers: ages 3–14. Snowboarders: ages 5–14. Reservations 970.728.7414 or TellurideSkiSchool.com.



Cubs Camp Nursery and Daycare – Located in Mountain Village next to the Ticket Office, our nursery offers toys, games, infant gyms, crib rooms, and professional caretakers. Open 8:30am–4:30pm every day. Reservations 970.728.7531.

FOR MORE INFORMATION:
970.728.7414 | TellurideSkiSchool.com

REVELATION BOWL



TERRAIN PARKS

Ute Park – Offering small and medium features for all ability levels. Located off Ute Park Express (Lift 11).

Hoot Brown Park – Riders can choose a variety of different lines within this one park based on ability level. The latest jibs, boxes, jumps and other medium and large features located just off the Gondola/Village Express (Lift 4).

RESORT DINING



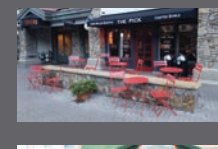
Allred's (10,551 ft) Experience Allred's breathtaking views, exquisite cuisine, one of the greatest wine lists in the country, and Telluride's finest après ski. Allred's is located at San Sophia Station at the top of the Gondola. Reservations 970.728.7474.



Alpino Vino (11,966 ft) Ski or ride to North America's highest elevation fine dining restaurant atop the See Forever run, at nearly 12,000 feet! Enjoy delicious soups, sandwiches and antipasti plates and a world-class list of exquisite wines. Ride our Snow Coach to an exclusive dinner at the highest wine bar in ski country. Ages 21+, reservations required. 970.728.7560



Altezza (9,500 ft) Casual mountain dining with regionally-sourced ingredients and panoramic sunset views of Mt. Wilson. Offering breakfast, midday and dinner menus—served up with Telluride's signature hospitality. 970.728.2525



The Pick (9,530 ft) For breakfast or lunch, enjoy hand-rolled burritos and tasty bowls that feature seasonal ingredients with unique homemade salsas and sauces. 970.728.2633



Big Billie's (9,160 ft) In the Meadows Base area, family-friendly Big Billie's offers soups, chilis, burgers, hot dogs, sandwiches and snacks of all kinds, hot and cold beverages, and a lovely patio facing the slopes. 970.728.7556



Bon Vivant (11,220 ft) Relish authentic French cuisine and libations while dining outdoors surrounded by majestic 360° views of the San Juan Range. To experience Bon Vivant is to live the good life. 970.728.7570



Crazy Elk Pizza (9,530 ft) Located slopeside in Mountain Village. Enjoy a delicious variety of salads, sandwiches and hand-tossed, NY-style crust pizzas. Perfect for a quick slice before hitting the slopes again. 970.728.7499



Giuseppe's (11,885 ft) Located at top of the Plunge Lift (Lift 9), Giuseppe's is a locals' favorite that offers a taste of New Orleans, cold beer and views that are unrivaled in North America. 970.728.7503



Gorrono Ranch (10,100 ft) A rustic lodge with a large outdoor deck and snow "beach", the perfect place to party with fabulous views. Featuring the historic "Saloon" bar, Gorrono is mid-mountain under the Village Express Lift (4), serving up delicious mountain fare and live music. 970.728.7578



Siam Talay Grille (9,545 ft) Blending the freshest ingredients with Asian spices and herbs, Siam's dishes will awaken your taste buds with the exotic flavors of Thai cuisine. 970.728.5678



Tomboy Tavern (9,530 ft) The slopeside favorite at the foot of Village Express Lift (4) features delicious burgers, chili, sandwiches during the day, upscale dining in the evenings with an extensive wine list. Then late night fun with great bar food! 970.728.7467



High Camp Warming Hut (11,815 ft) Top of Prospect Express (Lift 12) is the launching point of Telluride's hike-to terrain. Before you embark, fuel up with some hot drinks, soups and snacks. 970.728.7677

LODGING



Telluride Resort Reservations

The official central reservations of Telluride Ski & Golf Resort. For Telluride's best lodging, ski, golf and spa packages, visit TellurideSkiResort.com/Stay

The Peaks Resort & Spa

Enjoy ski-in/ski-out accommodations, spectacular views, and a wide selection of comfortable rooms, suites and penthouses. Exceptional amenities include Altezza restaurant, ski valet, fitness center, indoor/outdoor pool and lap pool, full-service spa and salon. ThePeaksResort.com

Inn at Lost Creek

Award-winning luxury boutique hotel with a premier location, one of Telluride's best restaurants, and outstanding customer service. InnatLostCreek.com

855.266.9407 | TellurideSkiResort.com/Stay



DOWNLOAD
THE
TELLURIDE
APP!



Real-time updates, snow and grooming reports, lift and trail closures, PLUS important notifications.

Scan a QR code with your phone to download the Telluride App, or visit TellurideSkiResort.com/App.



Download on the App Store



GET IT ON Google Play