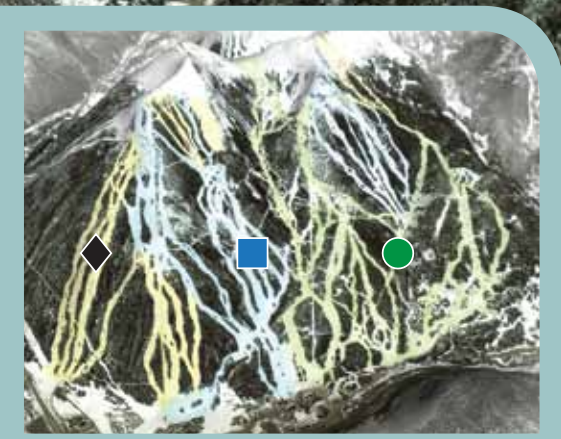


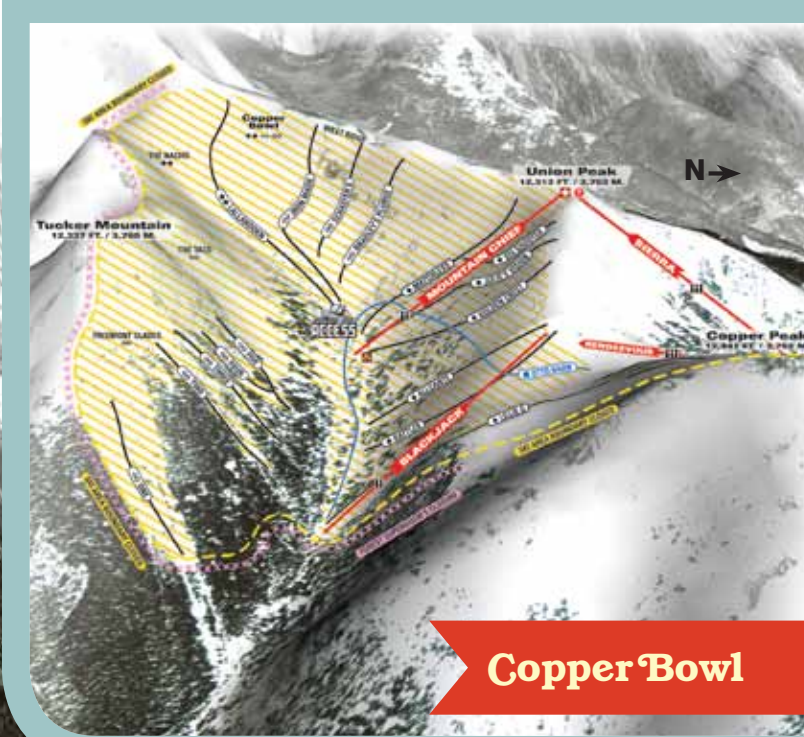
Spaulding Bowl



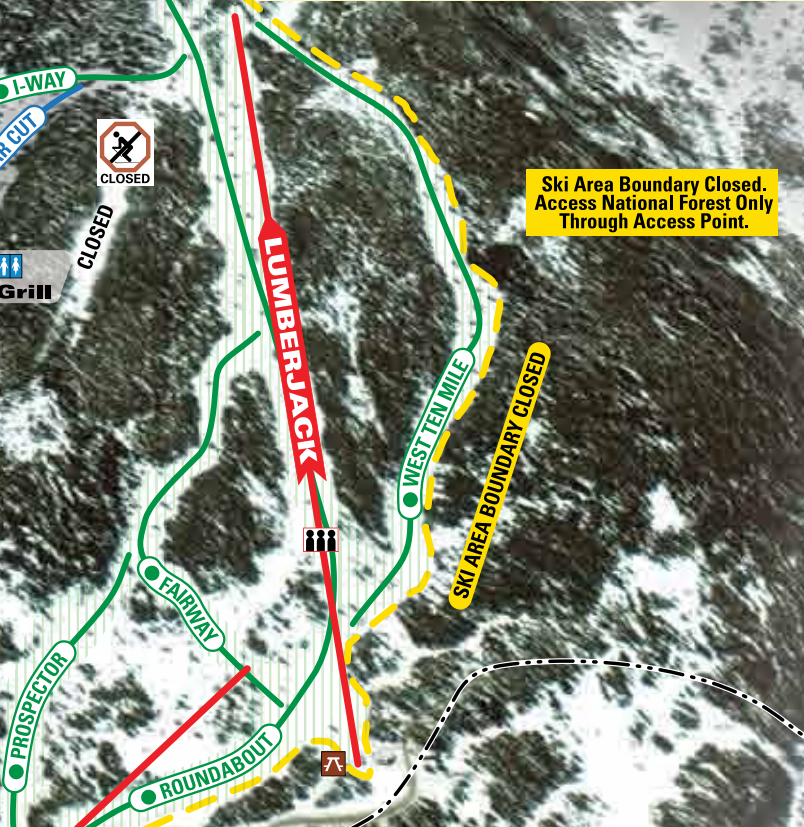
Copper Bowl



Naturally Divided Terrain
At Copper, naturally divided terrain actually separates skiers and snowboarders by their ability levels. This award-winning trail system is part of the reason Copper is considered one of Summit County's favorite resorts.



Free Snowcat Access
Free Tucker Mountain Snowcat Access is as close to a backcountry experience as you'll find inside any resort. Access Tucker Mountain by hiking the West Ridge of Copper Bowl or by taking a FREE ride in a Tucker Mountain Snowcat. Cats run from 10am to 1:30pm on select days. Cat operations, terrain openings and conditions may vary and are subject to change. Tucker Mountain closes at 2pm.



Ski Patrol
The members and avalanche dogs of the Ski Patrol welcome you to Copper. Look for Ski Patrol in black jackets and red vests with crosses. Please feel free to ask any patroller or other mountain personnel for information or assistance.

If someone is injured or in a collision:
Cross skis uphill from the incident and send someone to report the location, type of injury and description of the injured skier. Call SKI PATROL at 970-968-3311.

Lifts	
Lifts Quantity	
	High-Speed Six-Passenger Chairlift 1
	High-Speed Quad Chairlift 5
	Triple Chairlift 5
	Double Chairlift 4
	Surface Lift 2
	Conveyor Lift 5

Legend	
	Guest Services / Information
	The Tubing Hill
	Criterland
	Ski Patrol
	Parking
	Bus Stop
	Picnic Table
	Cafeteria / Restaurant / BBQ
	Traverse Routes
	Restrooms
	Inter-Faith Chapel
	Easiest way down from a given location
	Slow Zones
	Slow & Family Zones
	Cross Country Skiing
	Ski & Ride School
	FREE Snowcat Access
	Ski Area Boundary
	Forest Supervisor's Closure
	Closed

Terrain Zones	
	Easiest Terrain
	Intermediate Terrain
	Expert Terrain
	Expert Only
	High Alpine Adventure Terrain Rarely groomed and is designated for expert snowriders only. Expect unmarked obstacles.
	Extreme Terrain Contains cliffs, very steep (50 degree or greater pitch) slopes, as well as rocks and other hazards. Skiing or snowboarding extreme terrain is for EXPERTS ONLY.
	Freestyle Terrain Features include but are not limited to: jumps, jibs, rails, fun boxes, snowcross, quarterpipes, halfpipes, superpipes and all other constructed and natural features.
The following terrain site features will be posted at Terrain Park entrances:	
	Smaller Features
	Medium Features
	Larger Features
Warning: Don't stop or stand where you are not visible from above. Make a plan. Look before you leap. Easy style it. Respect gets respect.	

This map is an artistic representation and does not accurately reflect the contours or dimensions of the resort or its specific areas. Source image © GeoEye, Inc.

