



Parking Lot & Snow-front Interface



Base Area & Lighting



View from Ice Rink Patio



Beginner Terrain and Lighting



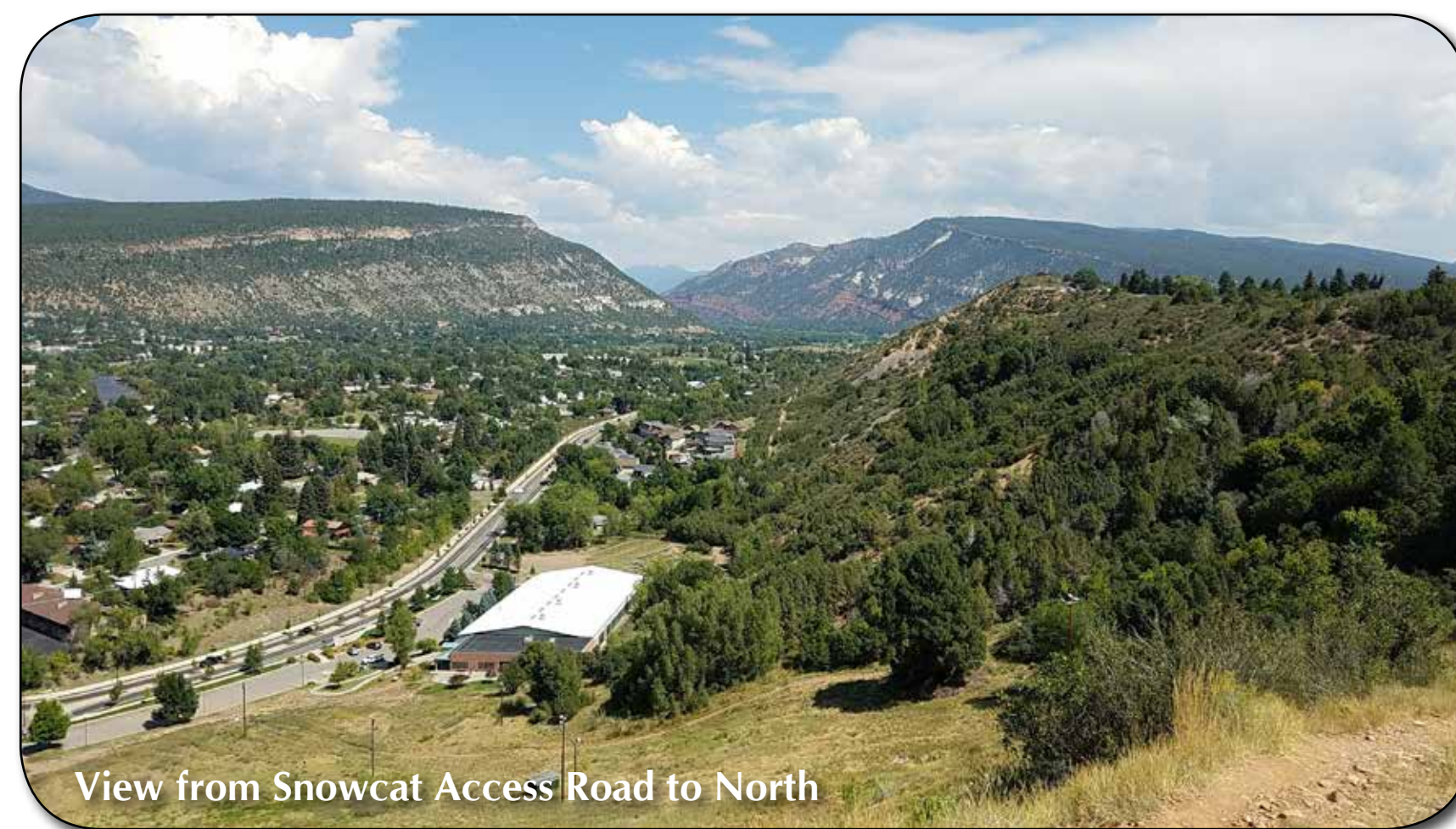
Tubing Hill



Ice Rink Patio



Top of Big Tow



View from Snowcat Access Road to North



Little Tow & Beginner Terrain




Intermediate and Expert Terrain



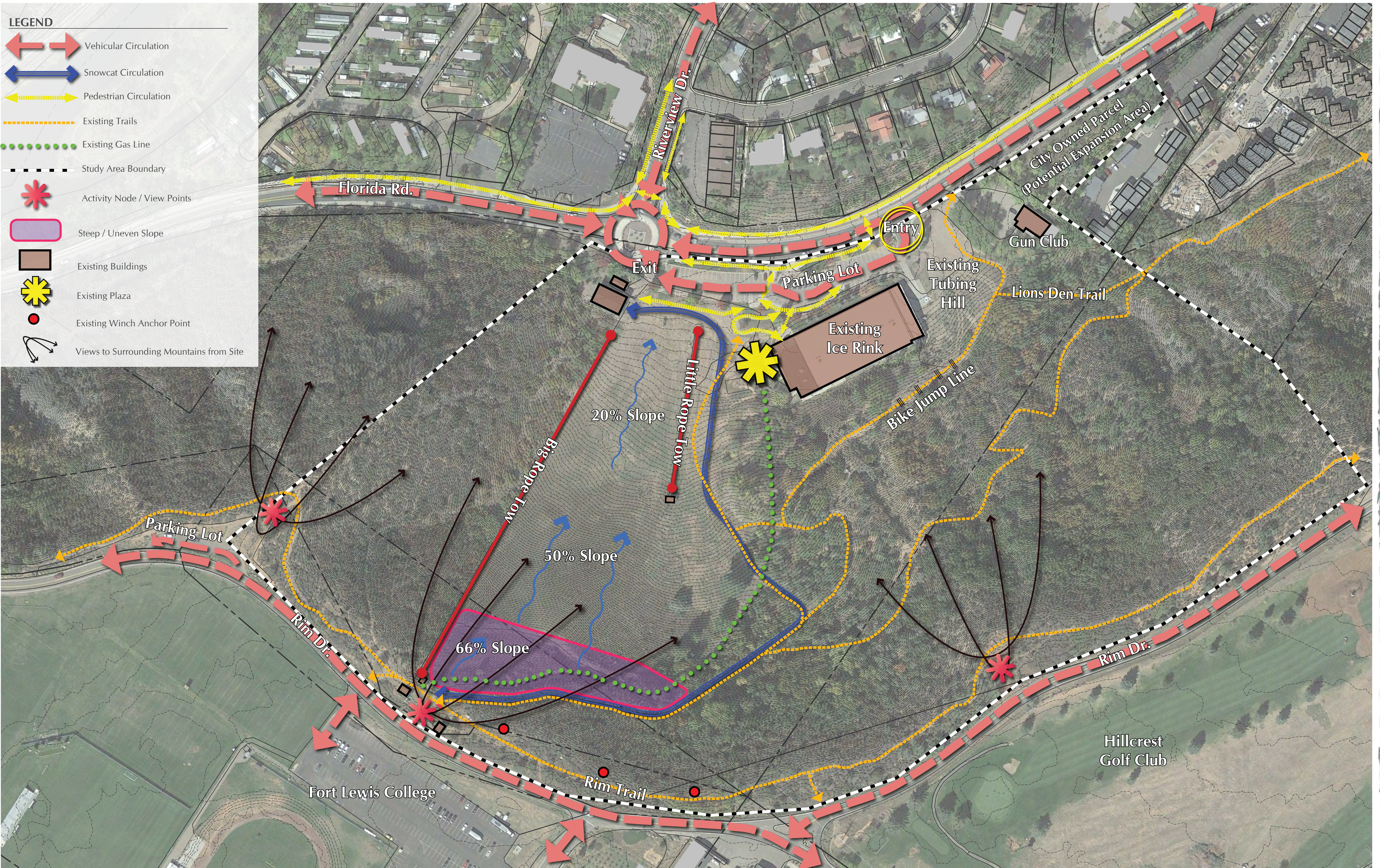
Maintenance Building and Bottom of Big Tow



Parking Lot & Retaining Wall



CHAPMAN HILL MASTER PLAN





LEGEND

New Expert Terrain Expansion (Re-grade, Clearing, Re-seed)
 Phase 1 Improvements (Shown for Reference)
 Big Rope Tow Removed (After Prep of New Expert Ski Terrain)
 Improved Path to Drop-Off
 Study Area Boundary
 Expanded Lighting to New Ski Terrain
 Existing Buildings
 Expanded Snowmaking Capacity



Big Rope Tow Replacement Options and Costs

Used Chairlift

- \$200-500k range
- Older lifts can require many upgrades and are not cost efficient.

Platter Pull (Poma) or T-Bar Lift

- \$476k
- 600 Person Per Hour Capacity
- 295 Feet Per Minute
- T-Bar is easier for Snowboarders

New Triple Chairlift

- \$972k
- 900 Person Per Hour Capacity

New Double Chairlift

- \$1.2 Million
- + \$52k for mid unload station



Phase 2 Improvements



Little Rope Tow Replacement Options and Costs



Skier Conveyor (Magic Carpet)

- Single Conveyor - \$168k (\$348k w/Cover)
- Dual Conveyor - \$184k (\$372k w/Cover)
- Replaces Little Tow



Small Wire Rope Tow

- Approximately \$80k
- Replaces Little Tow

Optional Amenity



Rotondo - (Rotating Tow Rope)

- Approximately \$19k

Big Rope Tow Replacement Options and Costs

Used Chairlift

- \$200-500k range
- Older lifts can require many upgrades and are not cost efficient.



Platter Pull (Poma) or T-Bar Lift

- \$476k
- 600 Person Per Hour Capacity
- 295 Feet Per Minute
- T-Bar is easier for Snowboarders



New Triple Chairlift

- \$972k
- 900 Person Per Hour Capacity



New Double Chairlift

- \$1.2 Million
- + \$52k for mid unload station