

Sunnyside Lift

Albion Lift

Detachable Triple (Top Elev. 9,400' / 2,865 M)

Fixed Double (Top Elev. 9,514' / 2,899 M)

Open from 9:15 - 4:30

1 Crooked Mile

2 Patsy Marley

3 Dipsy Doodle

4 Sunnyside

5 Sugar Way

6 Home Run

7 Bluebell

8 Race Arena

9 Vail Ridge

10 Summer Road (Uphill Access)

Supreme Lift

Detachable Quad (Top Elev. 10,450' / 3,185 M)

Open from 9:15 - 3:30

14 Big Dipper

15 Rock 'n Roll

16 Three Bears

17 Upper Big Dipper

18 No. 9 Express

19 Erosion Gullies

20 Challenger

21 Sleepy Hollow

22 Vicky's

23 White Squaw Area

24 Hammer Head

25 Supreme Challenge

26 Piney Glade

27 Sidewinder

28 Spiny Chutes Area

29 Back Forty

30 So Long

31 Sunset

32 Snowshoe Hill

33 Last Chance

34 East Castle

35 Castle Apron

Sugarloaf Lift

Detachable Quad (Top Elev. 10,500' / 3,200 M)

Open from 9:15 - 4:00

36 Little Dipper

37 East Baldy Traverse

38 Waldron's Way

39 Razor Back

41 Devil's Elbow

42 Rollercoaster

43 Cecret Cutoff

44 Devil's Castle Area

45 Sugar Bowl

46 Gravy Boat

47 Cecret Saddle

48 Cabin Hill

49 Amen

50 Extrovert

51 Chartreuse

52 Glory Gulch

53 Running Dog Nose

54 Keyhole Gulch

55 Glory Hole Area

56 Yellow Trail Area

Collins Lift

Detachable Quad (Top Elev. 10,400' / 3,169 M)

Open from 9:15 - 4:30

57 Devil's Way

58 Mambo

59 Strawberry

60 High Main Street

61 Main Street

62 Saddle Traverse

63 Race Course Saddle

64 Ballroom Traverse

65 Ballroom Area

66 Shoulder Traverse

67 Baldy Shoulder Area

68 Fred's Slot

69 Spring Valley

70 Spruces

71 High Traverse

72 High Race Course

73 High Sunspot

74 Race Course

75 Sunspot

76 Watson Line

77 Annie's

78 Jake's

79 No Name

80 Santa Claus

81 Jitterbug

82 Christmas Tree

83 Stone Crusher

84 Lone Pine

85 Alf's High Rustler

86 Regal Chute

87 Rustler Four

88 Hourglass Chute

89 Eagle's Nest

90 North Rustler

91 High Nowhere

92 Greeley Bowl

93 Greeley Hill

94 High Greeley

95 Gunsight

96 Eddie's High Nowhere

97 East Greeley Area

Wildcat Lift

Fixed Double (Top Elev. 9,780' / 2,980 M)

Open from 9:15 - 4:00

98 Aggie's Alley

99 Taint

100 Meadow

101 Corkscrew

102 180° Bend

103 Lower Rustler

104 Stimulation

105 Blitz

106 Johnson's Warm Up

107 Punch Bowl

108 Nina's Curve

109 Schuss Gully

110 Collins Face

111 Bear Paw

112 Rock Gully

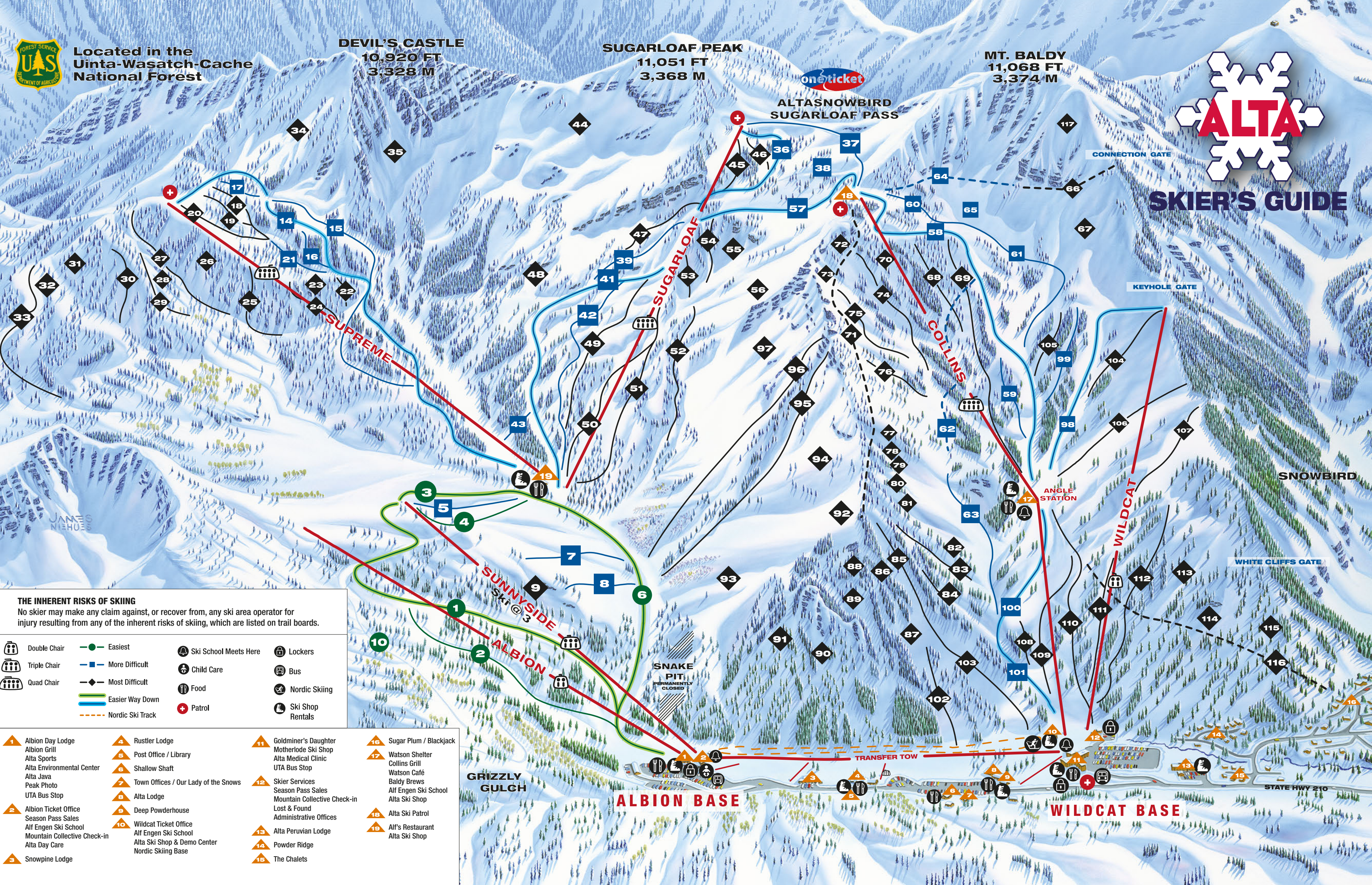
113 Wildcat Face

114 Wildcat Bowl

115 Westward Ho

116 Blackjack/Snowbird Return

117 Baldy Chutes Area (via Sugarloaf Lift)



SKIER'S GUIDE



SKIERS GUIDE



Alta Ski Area
PO Box 8007 Alta, UT 84092 USA
801.359.1078
alta.com • info@alta.com

Tickets

Albion Base

Ticket Office

Lift tickets, ski school tickets and season passes.
8:30 – 3:00
Day & overnight lockers available.

Wildcat Base

Ticket Office

Lift tickets, ski school tickets and season passes.
8:30 – 4:00
Day & overnight lockers located at
Goldminer's Daughter Lodge.

Skier Services

Information, season passes, lift tickets, lost & found.
8:00 – 4:30
801.359.1078

Retail & Rental

Albion Base

Alta Sports

Alta Sports, located in the Albion Day Lodge, offers
retail, rental and demo packages.
8:30 – 5:00
801.742.3110

Wildcat Base

Alta Ski Shops

The Alta Ski Shop, located in the Wildcat Ticket
Office, offers retail, rental and demo packages.
8:00 – 5:00
801.799.2293

Additional mid- mountain locations:

- Alta Ski Shop at Alf's Restaurant.
Retail and demo center. 9:15 – 4:00
- Alta Ski Shop at Watson Shelter.
Retail and accessories. 9:15 – 4:00

Ski School

Albion Base

Alf Engen Ski School Office

Reservations, ski school tickets and lift tickets.
8:00 – 5:00
801.799.2271

The Alf Engen Ski School invites you to take your
skiing to the next level. Our certified pros will help
you ski smoother and with better control, unlocking
more of Alta's amazing terrain for you. And we will
have a bunch of fun along the way!

- Private lessons for all ages and skill levels.
By reservation only.
- Adult beginner and intermediate 2 hour
class lessons. Offered mornings and afternoons
on weekends and afternoons only on weekdays.
- Adult advanced and expert 2 1/2 hour off-trail
workshops. Offered every afternoon.
- Children's Lessons – Ages 4 through teens.
Half day and all day options are available for
all skill levels.
- Early Bird Skiing
Access Alta's fantastic snow prior to lift opening.
By reservation only; space is limited.
- Grizzly Gulch Snow Cat Skiing
Guided backcountry skiing by reservation only;
space is limited. Conditions permitting.

Satellite ski school office locations:

Wildcat Base Ticket Office, open mornings.
Watson Shelter at mid-mountain, open mid-day.

Dining

Albion Base

Albion Grill

Enjoy indoor and outdoor seating with a full
selection of hearty skier food with beautiful views
of Albion Basin and Devil's Castle. Located at
Alta's hub for family skiing, the restaurant is easily
accessible.
8:30 – 5:00
801.832.1702

Alta Java

Ski up to Alta Java's window! The shop serves
specialty coffee and espresso.
8:30 – 5:30

Mid-Mountain

Alf's Restaurant

Located at the base of Supreme & Sugarloaf lifts,
Alf's offers hot sandwiches and burgers off the
grill, as well as tasty soups and sandwiches. The
restaurant has indoor and outdoor seating with
beautiful views of Albion Basin and Devil's Castle.
9:15 – 4:30
801.799.2295

Watson Shelter

Located mid-mountain off the Collins lift, Watson
Shelter offers several dining options.

On the snow level of Watson Shelter, Baldy
Brews serves great hot chocolate, espresso,
baked goods, a wide variety of beers and the best
selection of chocolates in Alta.
9:15 – 4:00
801.799.2296

Mid-level in the shelter is Watson Cafe. Enjoy
great views of Mount Superior and Mount Baldy
while you dine. Voted Utah's Best 100% grass-fed
Utah beef hamburger!
10:30 – 3:30
801.799.2296

On the top floor, skiers can pamper themselves
at Collins Grill. Discover a full-service European
mountain bistro-grill menu complete with wine,
spirits and daily chef specials. A "Young Skier"
menu is available upon request.
11:30 – 2:30
801.799.2296
Reservations accepted.

Other Services

Albion Base

Child Care – Alta Children's Center

The Alta Children's Center is a state licensed, full-
service, childcare facility serving children from 6
weeks to 9 years of age. Located on the top floor
of the Albion Ticket Office.
8:30 – 4:30
801.742.3042

Photography – Peak Photo

Peak Photo is located in the Albion Grill.
Professionals offer no shooting fee, no obligation
portraits and ski-by action photos. Purchase at
peakphoto.com.
9:00 – 5:00
801.742.2100

Environment – Alta Environmental Center

With an environmentally sensitive, recycled
stairway office located in the corner of the Albion
Day Lodge, the Alta Environmental Center invites
our skiers to stop by and say hello or to visit them
on alta.com.
801.832.1700

Alta Partners



Welcome to Alta

Welcome to Alta, a place where Mother Nature
combines some of her best snow, beauty and
terrain to create skiing experiences that are
cherished and shared for decades. We invite you
to explore and experience firsthand why we love
this special place. Whether you are a first time
or an experienced skier, like the steep and deep,
gentle groomed slopes or something in between,
you can find it here. Now, take a deep breath,
step outside and savor the majesty, charm and
authentic nature of Alta.

Best Regards
Michael Maughan

**Alta is a skier's mountain.
Snowboarding is not allowed.**

Your Responsibility Code

1. Always stay in control, and be able to stop
or avoid other people or objects.
2. People ahead of you have the right of way.
It is your responsibility to avoid them.
3. You must not stop where you obstruct a trail,
or are not visible from above.
4. Whenever starting downhill or merging into a
trail, look uphill and yield to others.
5. Always use devices to help prevent runaway
equipment.
6. Observe all posted signs and warnings. Keep
off closed trails and out of closed areas.
7. Prior to using any lift, you must have the
knowledge and ability to load, ride and
unload safely.

KNOW THE CODE: IT'S YOUR RESPONSIBILITY
THIS IS A PARTIAL LIST.
BE SAFETY CONSCIOUS.