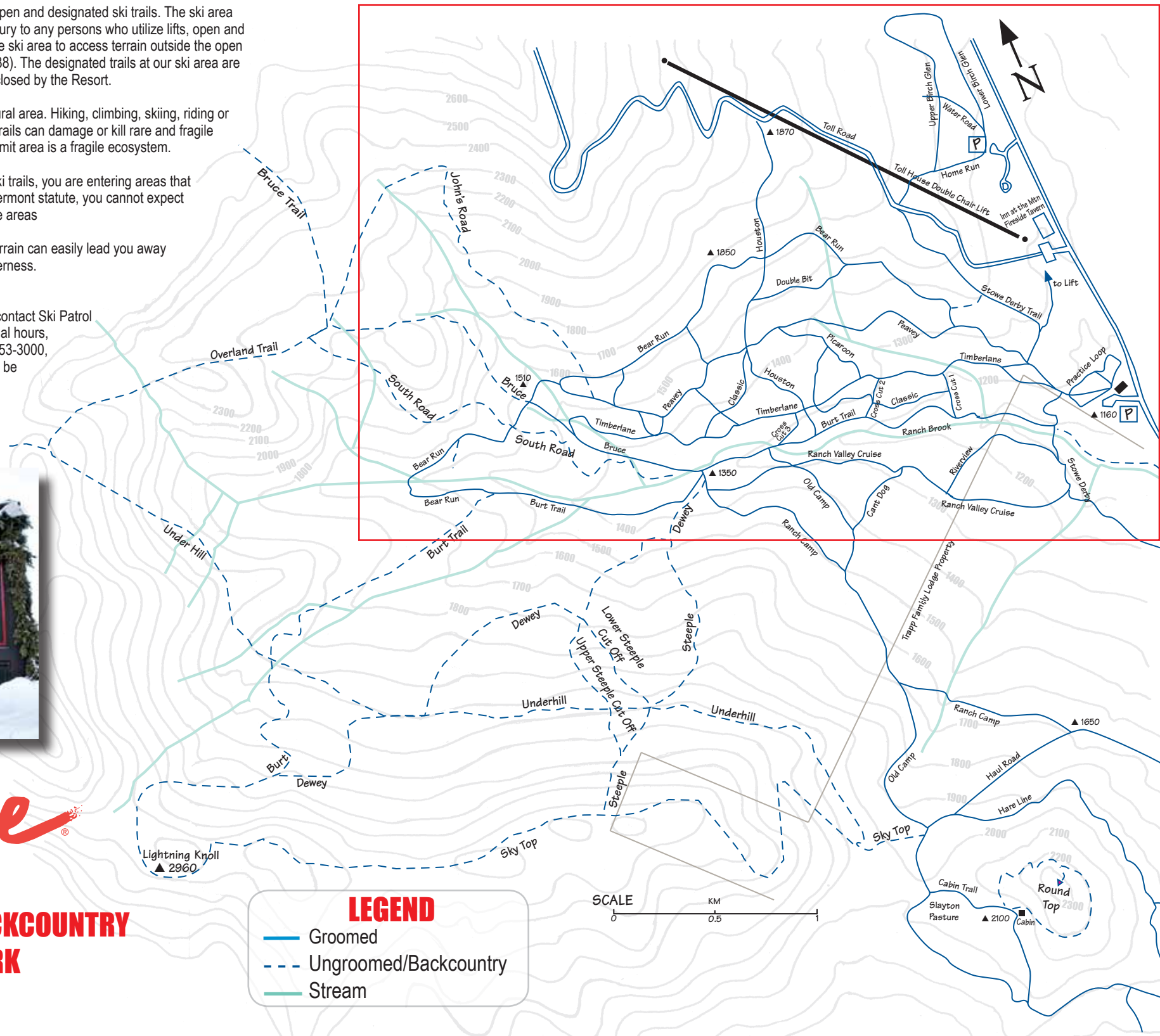


## SKIING OFF DESIGNATED TRAILS

- If you ski in the woods, you leave the open and designated ski trails. The ski area is not responsible for any damage or injury to any persons who utilize lifts, open and designated trails, or other facilities of the ski area to access terrain outside the open and designated ski trails. (12 V.S.A. 1038). The designated trails at our ski area are indicated on this map and are open or closed by the Resort.
- Mt. Mansfield is a unique, precious natural area. Hiking, climbing, skiing, riding or snowshoeing off open and designated trails can damage or kill rare and fragile plants. Realize that the mountain's summit area is a fragile ecosystem.
- If you leave the open and designated ski trails, you are entering areas that have not first aid rescue services. By Vermont statute, you cannot expect any help regarding your actions in these areas
- Skiing in the woods or off designated terrain can easily lead you away from the ski area and deep into the wilderness.
- **FIRST AID SERVICES**  
For first aid assistance during the day, contact Ski Patrol at 802-253-3620. During non-operational hours, contact the Information Center at 802-253-3000, or dial 911. If help is rendered, you may be held liable for the cost of your rescue.
- Never ski alone.



**Stowe**  
EXTENDED BACKCOUNTRY  
TRAIL NETWORK



**LEGEND**

- Groomed
- - - Ungroomed/Backcountry
- Stream

SEE REVERSE FOR DETAILED AREA



**CROSS-COUNTRY & SNOWSHOE CENTER TRAIL MAP**

**CONDITIONS**  
802-253-3602

**Stowe**  
MOUNTAIN RESORT

[STOWE.COM/SKI-RIDE/XC](http://STOWE.COM/SKI-RIDE/XC)



## SNOWSHOEING

Snowshoeing is another easy way to enjoy the winter woods. Our snowshoe-specific trails are very intimate with nature. In soft snow or hard, this is a simple, low impact alternative to skiing - and you will get some great exercise while experiencing the serenity of our wilderness playground. Take a pair of ski poles along and get some great upper body exercise. There are over 8 miles of snowshoe-only trails, with access to another 20 miles of ski trails, for an experience the whole family can enjoy.

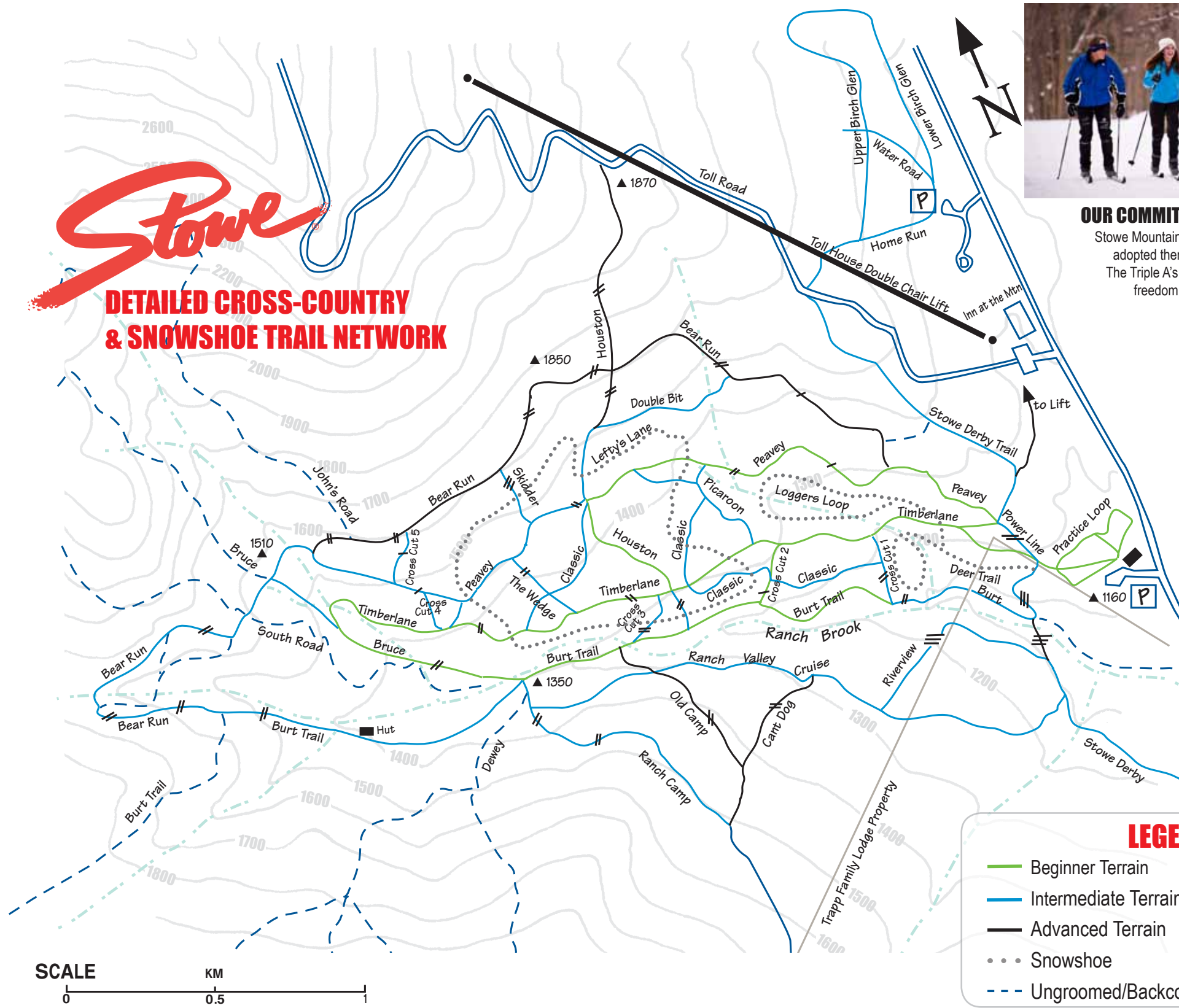
## EQUIPMENT RENTAL

The latest technology and full line of brand-name equipment are conveniently located at the Cross Country Center. Classic skis, skate skis, backcountry skis, snowshoes, boots and poles are available for adults and children. For prices and availability please call 800.253.4SKI.



## CROSS-COUNTRY SKIING RULES

1. Skiers must register at the Cross-Country Ski Center before skiing on wilderness trails.
2. Do not ski on wilderness trails alone. Many miles of wilderness trails are not patrolled and help may not be available. Ski at your own risk.
3. Skiers must have adequate ski-touring clothing and equipment to withstand the extremes of changing weather and snow conditions.
4. Be aware that even where assistance is available, time is an important factor, as a skier can be miles from a phone or facility.
5. Know your limits. Use common sense and follow safety precautions.
6. **CAUTION:** Grooming vehicles may be working on the trails during operational hours.



## OUR COMMITMENT STOWE'S TRIPLE A'S

Stowe Mountain Resort staff created the Triple A's and adopted them as our company's guiding principles. The Triple A's are the driving force that allows us the freedom critical to our way of life and our sport.

### ATTITUDE

RESPECT FOR OTHERS AND OUR ENVIRONMENT.

### AWARENESS

SENSITIVITY FOR EVERYONE'S NEEDS AND SURROUNDINGS.

### ACCOUNTABILITY

OWNERSHIP OVER OUR INDIVIDUAL ACTIONS AND THE PRESERVATION OF STOWE'S UNIQUE QUALITIES.



## LEGEND

- |                       |               |
|-----------------------|---------------|
| Beginner Terrain      | Stream        |
| Intermediate Terrain  | Gentle Hill   |
| Advanced Terrain      | Moderate Hill |
| Snowshoe              | Steep Hill    |
| Ungroomed/Backcountry |               |



## 2011/2012 CROSS COUNTRY CENTER RATES

<b>Trail Fee</b>	<b>Midweek/ Non-peak</b>	<b>Weekends &amp; Peak</b>
Adult	\$18	\$24
Child (6-12)	\$10	\$14
Senior (65+)	\$10	\$14
Adult after 1pm	\$15	\$20
Child/Senior after 1pm	\$7	\$9
Adult Season Pass	\$219	
Family Season Pass	\$409	
Child/Youth (6-13)	\$128	
Senior 65+	\$174	

### **Lessons**

Group	\$30	\$41
Private, 1 per, 1 hour	\$72	\$97
Private, add. Person/hour	\$15	\$21
Private, 2 hour 1 person	\$108	\$134

### **Intro Package**

Price includes rentals, lesson and trail fee for the day.

\$48	\$65
------	------

### **Rentals - Daily Rate**

Complete or partial packages of touring,

Back-country, performance skiing or snowshoeing.

Adult	\$25	\$34
Child	\$16	\$22

*\*Trail fees and rentals include 6% Vermont sales tax.*



## 2011/2012 CROSS COUNTRY CENTER EVENTS

### **January 4, 2012**

**Season opener for the Stowe Nordic Outing Club Citizen Race Series.**

5K classic ski race. Open to all. Free entry, start 4pm

### **January 8, 2012**

**Sixth annual Stowe Nordic BKL Mini-Marathon.**

10 am start, 9 am registration

A classic ski tour for families, timed and not-timed divisions.

15K and 25K courses, with great food stops and camaraderie along the way. Commemorative souvenir and hot chili following the event is included. \$15 per skier.

More info at [www.stowenordic.org](http://www.stowenordic.org) or call 802-253-3688.

### **February 1, 2012**

**Stowe Nordic Outing Club Citizen Race Series.**

5K classic ski race. Open to all. Free entry, start 4pm

### **February 10, 2012**

**Stowe Derby Descent Recon**

Practice run down the Toll Road for the big race. Meet at Look Out Chairlift at 1:30 p.m. sharp for free lift to the start. Coaching included, More details at [www.stowederby.com](http://www.stowederby.com)

### **February 26, 2012**

**66th Annual Stowe Derby.**

A New England tradition. Race from the top of Mt Mansfield to Stowe Village, 10 miles. - 5K Short Course for under age 14.

Classic and freestyle skate divisions. Info at [www.stowederby.com](http://www.stowederby.com)

### **March 14, 2012**

**Stowe Nordic Outing Club Citizen Race Series final event.**

5K classic timed race, followed by refreshments and awards. 4pm start. Open to all.

**5781 MOUNTAIN ROAD (ROUTE 108)  
STOWE, VERMONT, 05672  
802.253.3000 | 800.253.4SKI  
CONDITIONS REPORT: 802.253.3602  
WWW.STOWE.COM/SKI-RIDE/XC**