

Value Lift Passes

4-hour pass + lunch

●4 hours (Options including ramen, curry and rice, udon noodles and soba noodles)

Adults **2,200yen** Children **1,600yen**

Single-day pass + lunch

●Single-day pass + meal (Options including ramen, curry and rice, udon noodles and soba noodles)

Adults **2,700yen** Children **2,200yen**

Nighttime pass + light meal

●Nighttime pass+light meal (Nighttime house light-meal area. Options including takoyaki and yakisoba noodles.)

Adults **1,500yen** Children **1,400yen**

Senior discount (55 or older - ID required)

Weekday mornings

4-hour pass + lunch

Unlimited skiing until 12:00

Senior 4-hour pass + lunch

1,100yen

2,100yen

Lift pass prices

	Single-day pass (9:00~21:00)	6-hour pass	4-hour pass	1-point pass (valid for the whole season)	Nighttime pass (16:00~21:00)
Adults	2,400yen	2,200yen	1,900yen	250yen	1,300yen
Children	1,900yen	1,600yen	1,300yen	200yen	1,200yen

Value Rental Prices

Ski set or board set

Adults **4,000yen** Children **3,000yen**

All-inclusive set

Ski set (or snowboard set) + Apparel (top, bottom) • Knit cap • Goggles • Gloves

Adults **6,000yen** Children **5,000yen**

	Adults	Children
Skis or snowboard	2,700yen	1,700yen
Ski boots or snowboard boots	1,700yen	1,700yen
Ski poles	600yen	400yen
Apparel (top, bottom)	2,100yen	1,600yen
Knit caps • goggles • gloves • sleds	500yen each	

*Child rates are for children of elementary school age or younger.
*All prices include tax.



Mitsui Outlet Park Sapporo Kitahiroshima ↔ Dynasty

Free shuttle bus

From Mitsui Outlet Park Sapporo Kitahiroshima	From Dynasty
9:30	11:10
11:10	12:25
12:25	14:25
13:10	15:10
15:10	15:35
15:35	16:25
16:00	17:00
17:00	19:00
19:00	21:00

*Latest timetables available online.

Website

For further information
Dynasty Ski Resort official website
<http://dynasty-resort.jp>



40 min. from Sapporo

DYNASTY SKI RESORT



DYNASTY SKI RESORT

●Business hours 9:00~21:00 ●Nighttime hours 16:00~21:00

Nibetsu 82-4, Kitahiroshima, 061-1267 TEL.011-376-2611 (direct line)

Free shuttle bus from & to
Mitsui Outlet Park Sapporo Kitahiroshima

The resort's wide slopes range from gentle to intermediate-level.



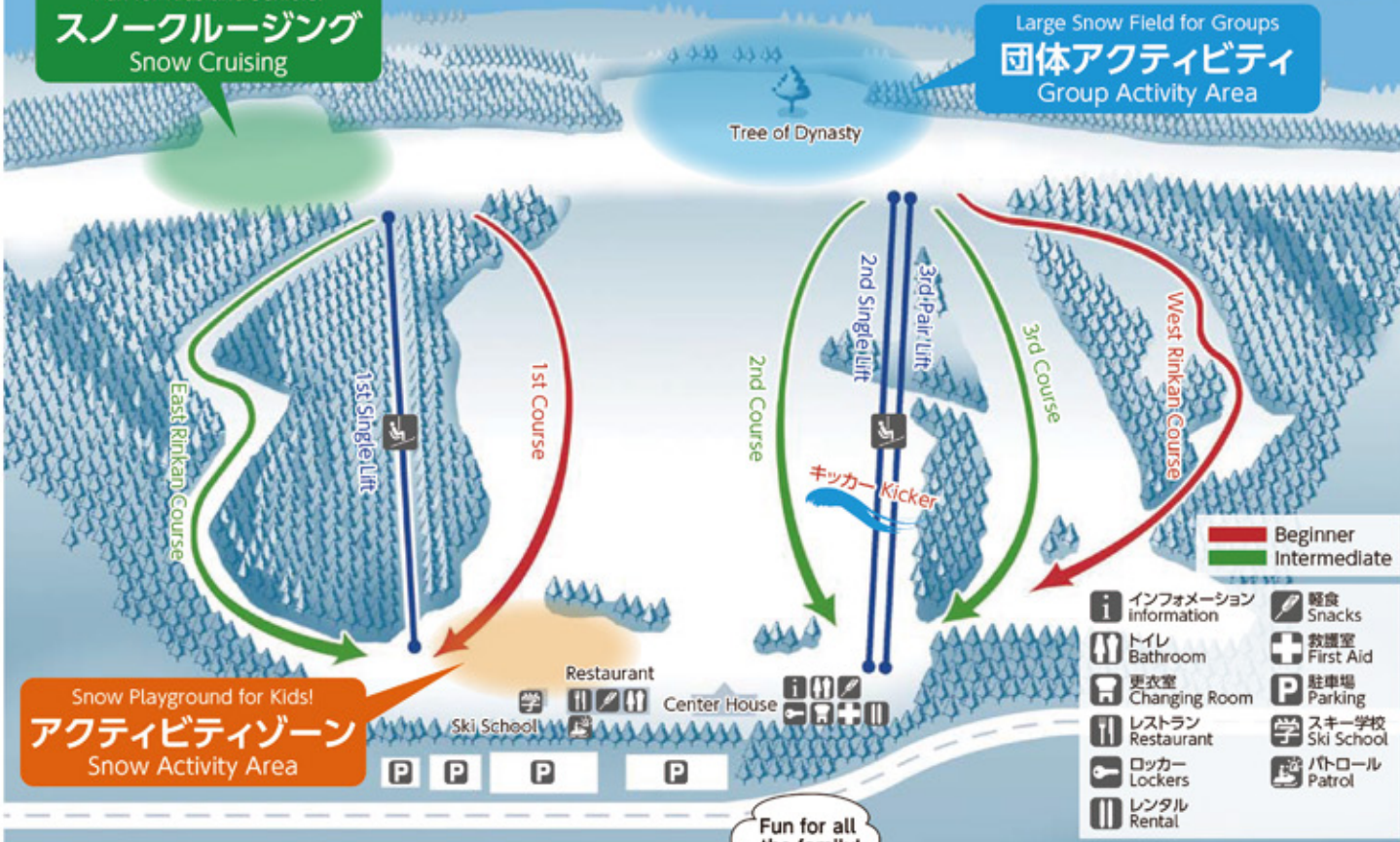
Spectacular views!

Views from the mountaintop extend beyond Sapporo as far as Otaru on clear days.



Fun for Kids and Seniors!
スノークルージング
Snow Cruising

Large Snow Field for Groups
団体アクティビティ
Group Activity Area

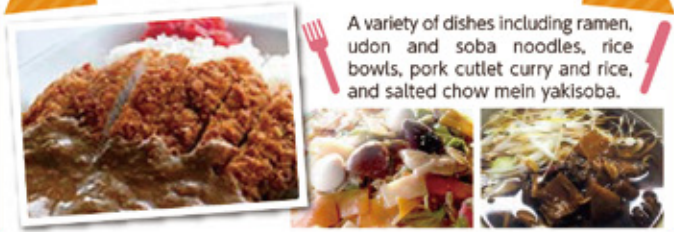


Snow Playground for Kids!
アクティビティゾーン
Snow Activity Area

Fun for all the family!

- Beginner
- Intermediate
- i** インフォメーション information
- T** トイレ Bathroom
- 更** 更衣室 Changing Room
- レ** レストラン Restaurant
- ロ** ロッカー Lockers
- レ** レンタル Rental
- 食** 軽食 Snacks
- +** 救護室 First Aid
- P** 駐車場 Parking
- 学** スキー学校 Ski School
- パ** バトロール Patrol

Extensive menu



A variety of dishes including ramen, udon and soba noodles, rice bowls, pork cutlet curry and rice, and salted chow mein yakisoba.

Fresh lamb Genghis Khan BBQ Reservations required



[Contact for details of availability]
Served with vegetables and rice.

60 min. Adults **2,500yen**
Children **2,000yen**

Adults/children
Buffet-style for 500yen extra!

Ski & Snowboard



The perfect ski resort for families and beginners, featuring wide open slopes. Dynasty Ski Resort's safe, easy slopes are perfect for first-time skiers and snowboarders. The resort is known for its outstanding deep powder snow.

Catch some air! Have fun with kickers!

Dynasty's perfectly sized kickers are ideal for thrill-seeking skiers and snowboarders. Do cool tricks easily! See the website for photos of actual tricks. *Kicker availability is subject to weather/snow conditions.



A range of activities

Gloves, knit caps and goggles can be rented.

- Snow cruising
- Rubber tubing
- Sledding area

The newly opened free sledding area provides a place for all generations to enjoy Dynasty. Snow cruising and snowshoe hiking through the area's beautiful snowfields are highly recommended activities.

Adults/children **600yen ~ 2,200yen**

*Activity program availability is subject to capacity limitations and weather/snow conditions.
*Child rates are for children of elementary school age or younger.
*All prices include tax.